

Product information presented here reflects conditions at time of publication. Consult factory regarding discrepancies or inconsistencies.



PUMP COMPANY

Zoeller Family of Water Solutions™

MAIL TO: P.O. BOX 16347 • Louisville, KY 40256-0347
SHIP TO: 3649 Cane Run Road • Louisville, KY 40211-1961
(502) 778-2731 • 1 (800) 928-PUMP • FAX (502) 774-3624

visit our web site:
www.zoeller.com

REPLACEMENT PARTS LIST FOR MODELS:

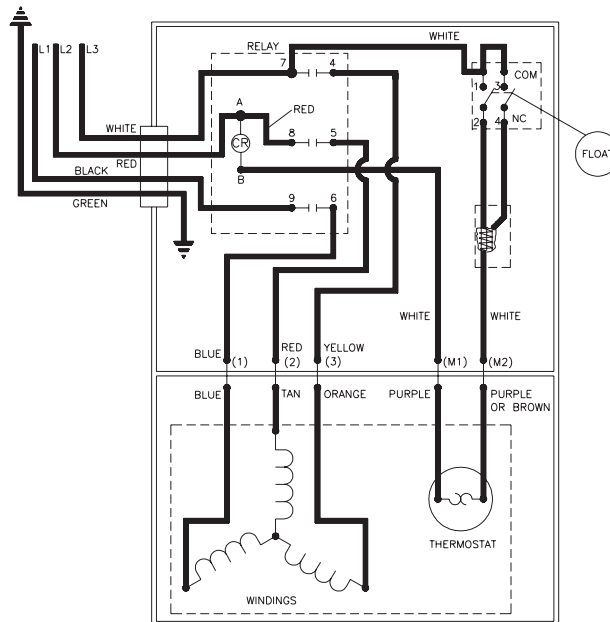
CF284 3PH AUTOMATIC 230V

Consult factory for all other models

TO ORDER REPLACEMENT PARTS:

PLEASE FURNISH THE FOLLOWING INFORMATION:

- Model Number.
- Part Number of Pump.
(If manufactured prior to June 1988, give 2 letter date code following Model No.)
- Part Number and Description of part.



WIRING DIAGRAM FOR MODELS
"CF284-A"
2/00 thru Current

REPLACEMENT PARTS LIST FOR MODEL: CF“284”

See next page for "CF284" illustration.

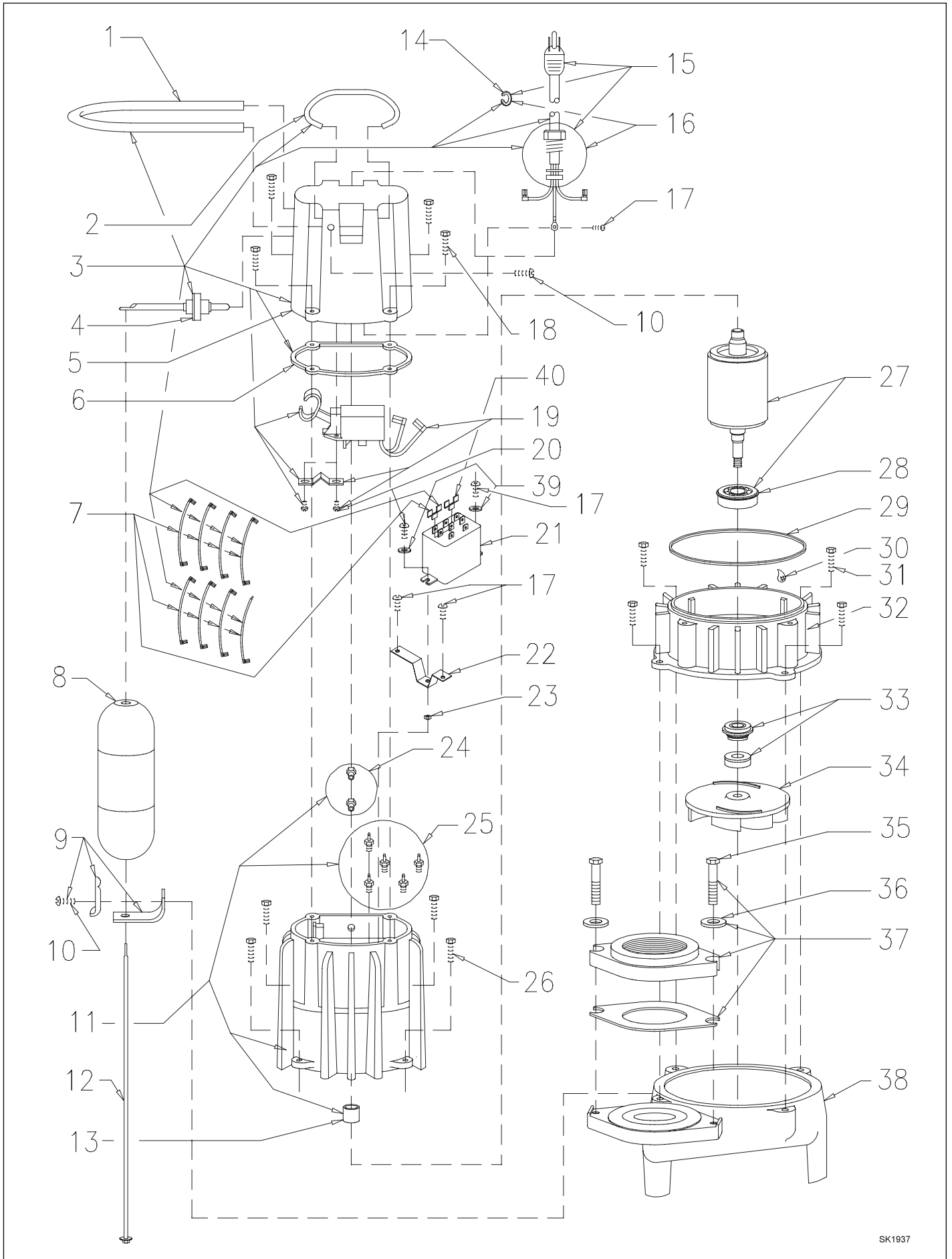
| MODEL: | | CF284-A | | | | | | | | | | | |
|----------|--|---------|-------|------------------|--|--|--|--|--|--|--|--|--|
| REF. NO. | DESCRIPTION | QTY | NOTES | 02/00 TO Current | | | | | | | | | |
| 1 | • Guard | 1 | | 001023 | | | | | | | | | |
| 2 | Handle | 1 | | 217069 | | | | | | | | | |
| 3 | Case Switch & Cd/230V/1Ph"284" | 1 | 2 | 013223 | | | | | | | | | |
| 4 | • Arm & Seal Asm"160/180/290" | 1 | | 004745 | | | | | | | | | |
| 5 | Case-Mach"160/180/290/290" | 1 | 2 | 004614 | | | | | | | | | |
| 6 | • Gasket,Case/Cover | 1 | | 001011 | | | | | | | | | |
| 7 | • Wire Pkg (8) Wires | 1 | | 013212 | | | | | | | | | |
| 8 | Float,Plastic | 1 | | 094039 | | | | | | | | | |
| 9 | Guide Asm,Fit Rod | 1 | | 094048 | | | | | | | | | |
| 10 | • Screw,#10-24 X.375 RHM-SI SS | 2 | | 001883 | | | | | | | | | |
| 11 | Housing, Mtr-& Str "284" GE | 1 | 1 | 013224 | | | | | | | | | |
| 12 | Rod Asm,Fit | 1 | | 001043 | | | | | | | | | |
| 13 | Bearing,Sleeve | 1 | | 001012 | | | | | | | | | |
| 14 | • Clamp,Strain Relief-Red | 1 | | 001770 | | | | | | | | | |
| 15 | Cord Term & Seal Asm 230V/3PH | 1 | 2 | 003761 | | | | | | | | | |
| 16 | • Seal,Cord-Asm & Strain Relief | 1 | 2 | 094032 | | | | | | | | | |
| 17 | • Screw,#6-32X.25RHM SI Tc Stlgr | 4 | | 001877 | | | | | | | | | |
| 18 | • Screw,.25-20 X.75 HHm-SS | 4 | | 001916 | | | | | | | | | |
| 19 | Switch Asm"160/180/290" | 1 | | 013214 | | | | | | | | | |
| 20 | • Screw,#6-32X.438Rhstlp"1"Stzi | 2 | | 004644 | | | | | | | | | |
| 21 | Relay 230/3PH | 1 | | 013069 | | | | | | | | | |
| 22 | Bracket, relay | 1 | | 013070 | | | | | | | | | |
| 23 | • Nut,#6-32 | 1 | | 006120 | | | | | | | | | |
| 24 | • Plug,Test-White | 2 | | 034090 | | | | | | | | | |
| 25 | • Seal,Thru Wall Term | 5 | | 003402 | | | | | | | | | |
| 26 | • Screw,.25-20 X 1" RHM-SI Tc Stlgr | 4 | | 007790 | | | | | | | | | |
| 27 | Rotor & Brg 230V/1Ph | 1 | | 009257 | | | | | | | | | |
| 28 | • Bearing,Lower Rotor | 1 | | 010069 | | | | | | | | | |
| 29 | • Seal, Mtr Hsg | 1 | | 001014 | | | | | | | | | |
| 30 | • Oil,Dielectric-(44 Oz Can) | 1 | | 003168 | | | | | | | | | |
| 31 | • Screw,.313-18 X 1" HH Cap-SS | 4 | | 002608 | | | | | | | | | |
| 32 | Adapter-Mach"280" | 1 | | 001003 | | | | | | | | | |
| 33 | • Seal,Shaft"282","284" | 1 | | 001015 | | | | | | | | | |
| 34 | Impeller"284" | 1 | | 007061 | | | | | | | | | |
| 35 | • Screw,.5-13 X 2 HH Cap-SS | 2 | | 001909 | | | | | | | | | |
| 36 | • Washer,SS-1.25" OD X .562" ID X .078 | 2 | | 002115 | | | | | | | | | |
| 37 | Flange Pkg 2" Npt | 1 | | 217024 | | | | | | | | | |
| 37 | Flange Pkg 3" Npt | 1 | | 317024 | | | | | | | | | |
| 38 | Housing,Pump-Mach | 1 | | 217012 | | | | | | | | | |
| 39 | Washer,Stl-.375" OD X .150"ID X .032 | 2 | | 002117 | | | | | | | | | |
| 40 | Terminal,Adapter(1)FEMx(2)Mail F. | 1 | | 014210 | | | | | | | | | |
| □ | Rebuild Kit"280" | 1 | | 013215 | | | | | | | | | |

- Items included in Rebuild Kit.
- Not shown in illustration.

NOTES:

- 1) Mtr. Hsg., Brg., Stator & Term. (Item 11) are preassembled at the factory and must be replaced as a unit. Stator is permanently attached to the motor Housing. Plug (Item 24); Seal, Thru Wall Term. (Item 25) and Bearing - Upper (Item 13) are replaceable.
- 2) If an "X" follows Model No., or Date Mfg. on brass ID tag, consult factory for ordering any parts.
- 3) See FM0160 Parts Price Sheet for listing of parts prices.
- 4) "NA" indicates, not applicable.

REPLACEMENT PARTS ILLUSTRATION FOR MODEL "CF284"



NOTES:



PUMP COMPANY

MAIL TO: P.O. BOX 16347 • Louisville, KY 40256-0347
SHIP TO: 3649 Cane Run Road • Louisville, KY 40211-1961
(502) 778-2731 • 1 (800) 928-PUMP • FAX (502) 774-3624

Your Peace of Mind is Our Top Priority®

visit our web site:
www.zoeller.com