

SUBMITTAL DATA SHEET

Sump, Sewage, & Effluent Pumps
DuraMAC™ | Guardian

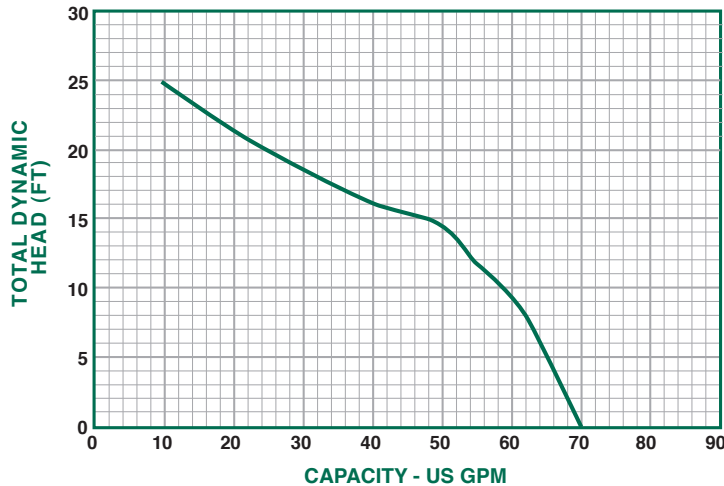
5050CVSP & 5050CUSP25 Sump Pump



See Pumps & Accessories
Price List for Limited
Warranty details.

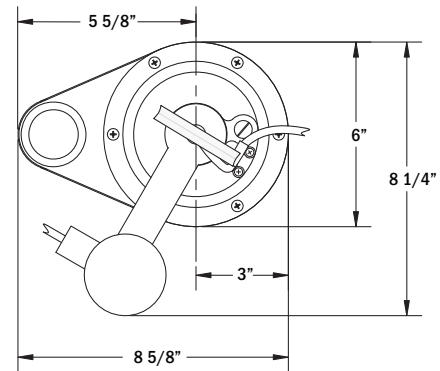
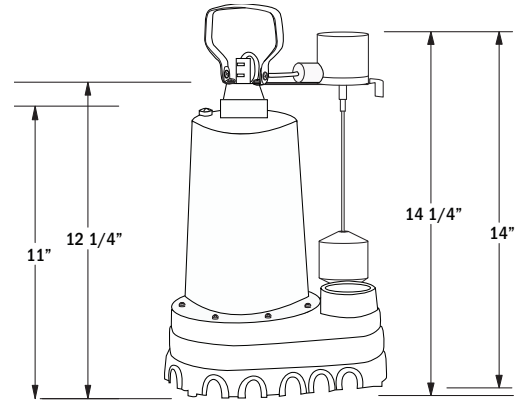
With a rugged cast iron construction, this pump can handle up to 70 gallons per minute.

Sump Pump Performance Curve



PERFORMANCE CHART

| Model | Gallons per Minute in Feet | | | | | |
|------------|----------------------------|----|----|----|----|----|
| 5050CUSP25 | 0 | 5 | 10 | 15 | 20 | 25 |
| 5050CVSP | 70 | 66 | 58 | 48 | 25 | 10 |



SUBMERSIBLE CAST IRON SUMP PUMP - 1 1/2" DISCHARGE

| Model | HP | Volts | Hz | Amps | Construction | Discharge Size | Cord Length | Solids Handling | RPM | Phase |
|---------------------------|-----|-------|----|------|--------------|----------------|-------------|-----------------|------|-------|
| 5050CVSP | 1/2 | 120 | 60 | 7.6 | Cast Iron | 1 1/2" | 10' | 1/2" | 3450 | 1 |
| 5050CUSP25 (NO SWITCH) | 1/2 | 120 | 60 | 7.6 | Cast Iron | 1 1/2" | 25' | 1/2" | 3450 | 1 |

SUBMITTAL INFORMATION

- Split Capacitor Motor -
- 1/2 HP continuous duty, thermal protected
- Lifts water up to 25' of vertical height
- 10' power cord, 25' cords are available at an additional charge
- Large 1 1/2" discharge for high capacity pumping
- Also available without a switch



NO-LEAD: The weighted average of the wetted surface of this no-lead product contacted by consumable water contains less than one quarter of one percent (0.25%) lead.



A.Y. McDonald Mfg. Co.
P.O. Box 508
Dubuque, IA 52004-0508

Toll Free: 1-800-292-2737
Fax: 1-800-832-9296
Hours: 7:00 a.m. - 5:00 p.m., CST

sales@aymcdonald.com
www.aymcdonald.com

A.Y. McDonald considers the information on this assembly drawing correct when published. Item and option availability, including specifications, are subject to change without notice.

Submitted by: