



Barmesa[®]
Pumps



**Vertical Multi-Stage
Centrifugal Pumps**

BMV

▶ INDEX

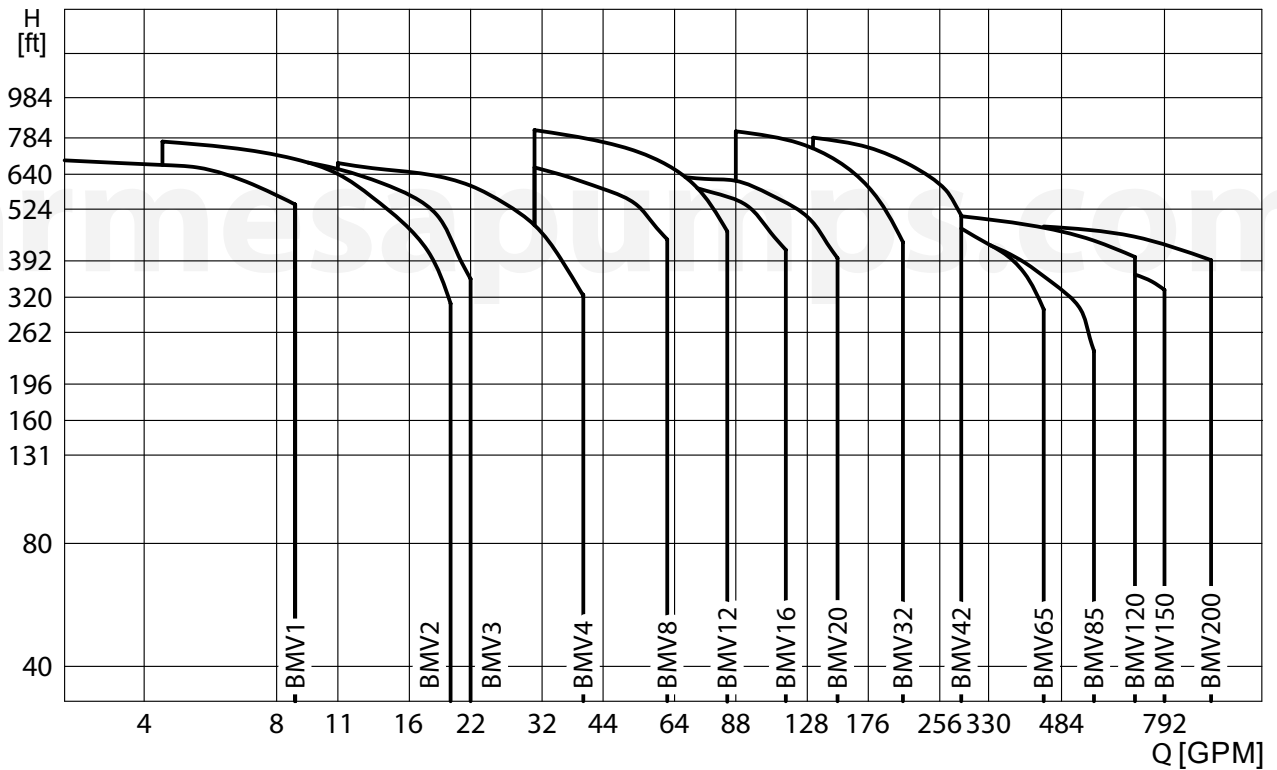
▶ VERTICAL MULTI-STAGE PUMP	1
▶ PERFORMANCE CURVE	1
▶ NOMENCLATURE	1
▶ NPHS	2
▶ OPERATION IN PARALLEL	3
▶ MOTOR	3
▶ MAXIMUM INLET PRESSURE	3
▶ MATERIAL	5
▶ CURVE BMV1	7
▶ CURVE BMV2	8
▶ CURVE BMV3	9
▶ CURVE BMV4	10
▶ CURVE BMV8	11
▶ CURVE BMV12	12
▶ CURVE BMV16	13
▶ CURVE BMV20	14
▶ CURVE BMV32	15
▶ CURVE BMV42	16
▶ CURVE BMV65	17
▶ CURVE BMV85	18
▶ CURVE BMV120	19
▶ CURVE BMV150	20

▶ VERTICAL MULTI-STAGE PUMP

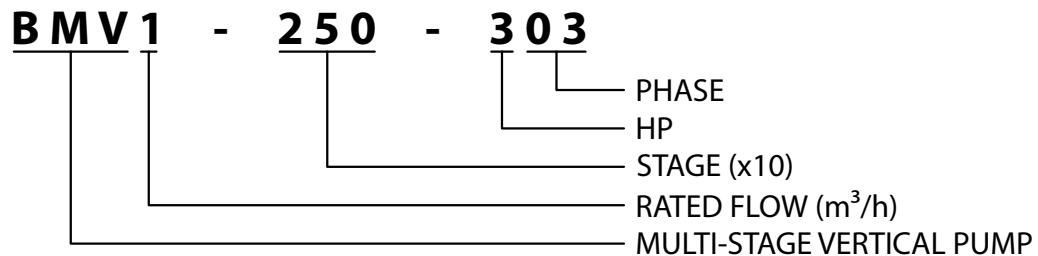
The BMV pump is designed to handle neutral clean liquids. It is a multifunctional product designed to transfer and boost water from various sources. The BMV pump is also designed to transfer and boost liquid at different temperature and with different flow rate and pressure.

- ▶ Pumped liquids: low viscosity, neutral, non-explosive liquids, not containing solid particles or fibers. The liquid must not attack the pump materials chemically.
- ▶ Boiler water supply and condensing system.
- ▶ Water treatment, filtration system.
- ▶ Food and beverage industries.
- ▶ Pressure boosting in high-rise buildings.
- ▶ Farmland irrigation, nursery irrigation and golf court irrigation.
- ▶ Industry cleaning system.
- ▶ Liquid transfer, circulation and boosting.
- ▶ Hot and cool water.

▶ PERFORMANCE CURVE



▶ NOMENCLATURE

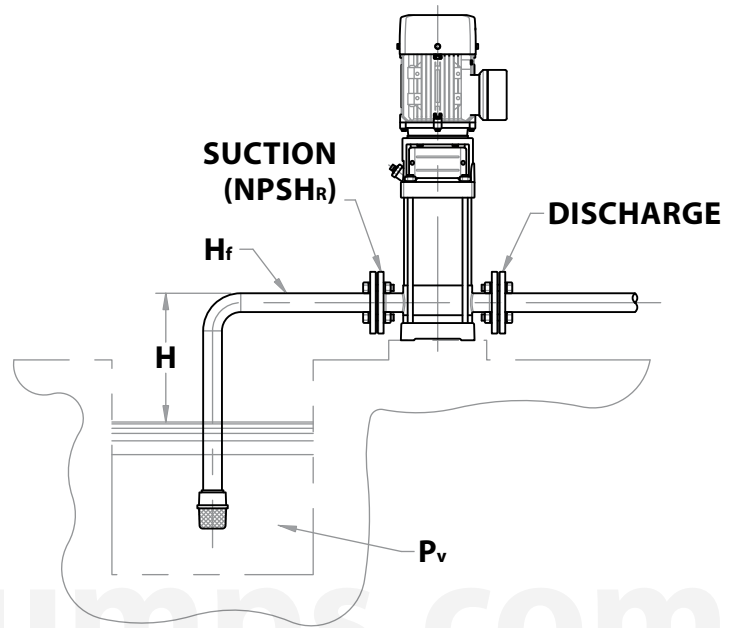


▶ NPSH_R

In case that the pressure in pump is lower than the steam pressure used to transfer the liquid, cavitation will occur. To avoid cavitation, a minimum pressure at the inlet side of the pump shall be controlled. The maximum suction pressure can be calculated with following formula:

$$\text{NPSH}_R = P_B - H - P_v - H_f$$

- ▶ **NPSH_R** = net positive suction head (feet).
- ▶ **P_B** = atmosphere pressure (bar). In a closed system, P_B means system pressure.
- ▶ **H** = maximum suction height.
- ▶ **P_v** = steam temperature pressure. This value must be obtained from steam temperature pressure tables (see Table 1).
- ▶ **H_f** = pipeline friction loss (feet).



If the calculated result H is positive, the pump may run under the maximum suction pressure H. In case the calculated result H is negative, a required head of minimum inlet pressure is necessary.

It is important to calculate the maximum suction height when hot liquids are pumped, when the pipeline friction loss is high or when the water is suctioned from great depths.

Table 1: Steam temperature pressure.

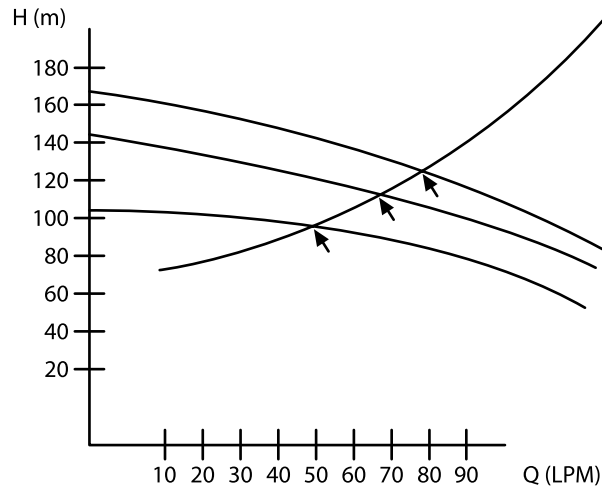
Temp. °F	Temp. °C	Steam pressure PSI Abs	Steam pressure Feet Abs
32	0	0.0885	0.204
40	4.4	0.1217	0.281
45	7.2	0.1475	0.34
50	10	0.1781	0.411
55	12.8	0.2141	0.494
60	15.6	0.2563	0.591
65	18.3	0.3056	0.706
70	21.1	0.3631	0.839
75	23.9	0.4298	0.994
80	26.7	0.5069	1.172
85	29.4	0.5959	1.379
90	32.2	0.6982	1.617
95	35	0.8153	1.89
100	37.8	0.9492	2.203
110	43.3	1.275	2.965

Temp. °F	Temp. °C	Steam pressure PSI Abs	Steam pressure Feet Abs
120	48.9	1.692	3.943
130	54.4	2.223	5.196
140	60	2.889	6.766
150	65.6	3.718	8.735
160	71.1	4.741	11.172
170	76.7	5.992	14.178
180	82.2	7.51	17.825
190	87.8	9.339	22.257
200	93.3	11.526	27.584
212	100	14.696	35.353
220	104.4	17.186	41.343
240	115.6	24.97	60.77
260	126.7	35.43	87.05
280	137.8	49.2	122.18
300	148.9	67.01	168.22

▶ OPERATION IN PARALLEL

Connecting several pumps in parallel operation for higher pressure requirements will result in a more efficient system performance. Operating multiple pumps offers greater advantages versus running a single larger pump.

- Example: A dual or multiple pump system provides continuous water supply if and when a pump becomes inoperative. In the case of a pump failure, only part of the system flow is affected.



Two pumps or more can be connected for parallel operation if necessary.

▶ MOTOR

- Totally enclosed, fan-cooled, standard efficiency.
- 2 pole, 3 phase, 60 Hz, 230 / 460 volt.
- IP55 protection class.
- Class "F" insulation.

▶ MAXIMUM INLET PRESSURE

These values are shown in the next table. The inlet pressure plus the pressure of the pump with closed valve must be lesser than the maximum working pressure.

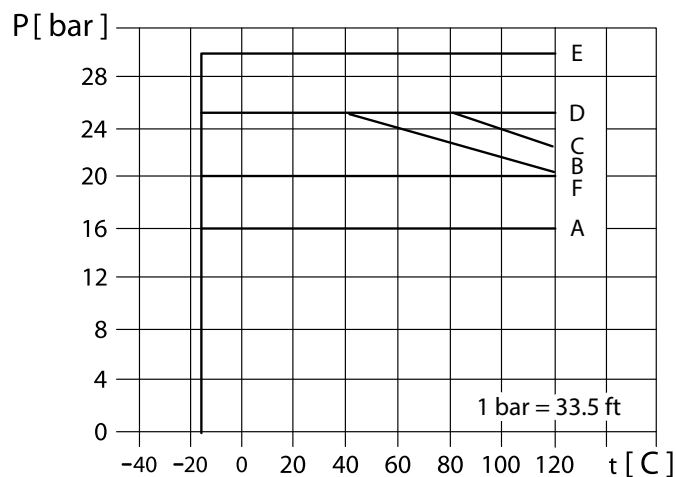


Table 2: Maximum pressure.

Model	Max. inlet pressure (bar)	Max. working pressure (curve)
BMV1		
90-103	22	B
110-153	22	B
130-153	22	B
170-203	22	B
210-303	22	B
230-303	22	B
BMV2		
60-153	23.5	B
70-203	23.5	B
110-303	23.5	B
150-403	23.5	B
180-503	23.5	B
BMV3		
80-153	23	B
110-203	23	B
150-303	23	B
170-303	23	B
190-403	23	B
230-403	23	B
250-503	23	B
BMV4		
60-303	21	B
80-403	21	B
100-503	21	B
120-503	21	B
160-753	21	B
BMV8		
50-403	20	C
60-503	20	C
80-753	20	C
100-1003	20	C
120-1003	20	C
140-1503	20	C
BMV12		
20-303	25	C
30-503	25	C
40-753	25	C
50-753	25	C
60-1003	25	C
70-1003	25	C
80-1503	25	C
90-1503	25	C
100-1503	25	C
110-2003	25	C
120-2003	25	C
130-2003	25	C
140-2003	25	C
BMV16		
30-753	20	C
40-1003	20	C
60-1503	20	C
80-2003	20	C
100-2503	20	C

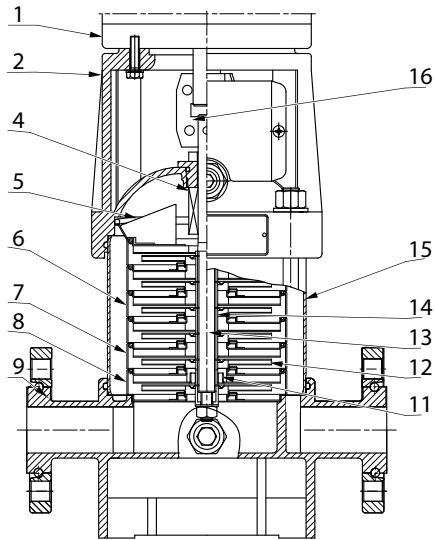
Model	Max. inlet pressure (bar)	Max. working pressure (curve)
BMV20		
10-303	20	C
20-503	20	C
30-753	20	C
40-1003	20	C
50-1503	20	C
60-1503	20	C
70-2003	20	C
80-2003	20	C
100-2503	20	C
BMV32		
22-753	25	A
32-1003	25	A
42-1503	25	A
52-2003	25	A
60-2503	25	D
82-3003	25	D
92-4003	25	D
90-4003	25	E
BMV42		
10-1503	26	A
20-2003	26	A
30-2503	26	A
42-3003	26	D
40-4003	26	D
50-4003	26	D
60-5003	26	D
BMV65		
11-1003	18	A
10-1503	18	A
20-3003	18	A
30-4003	18	A
42-5003	18	D
52-6003	18	D
BMV85		
10-2003	15	A
20-4003	15	A
30-6003	15	A
42-6003	15	D
BMV120		
10-2503	15	F
20-5003	15	F
30-7503	15	F
52-10003	15	F
BMV150		
10-3003	14	F
22-4003	14	F
32-7503	14	F
30-10003	14	F
42-10003	14	F

► NOTES

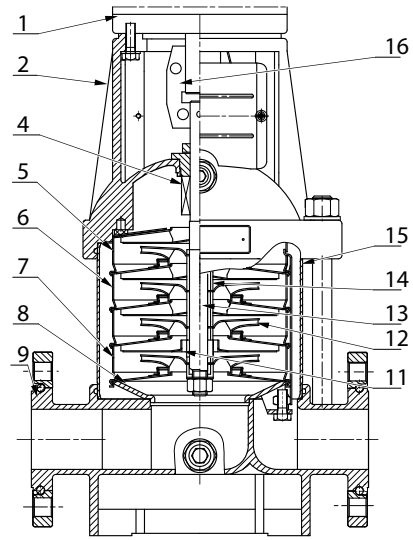
When the pump operates under ambient temperature higher than 104 °F (40 °C) or under altitude higher than 3280 ft, because of low air density and poor cooling effects, the motor output power will be decreased to certain extent. If the pump is operated under the above stated conditions, it should be equipped with motor of higher power.

► MATERIAL

BMV1, BMV2, BMV3, BMV4



BMV8, BMV12, BMV16, BMV20

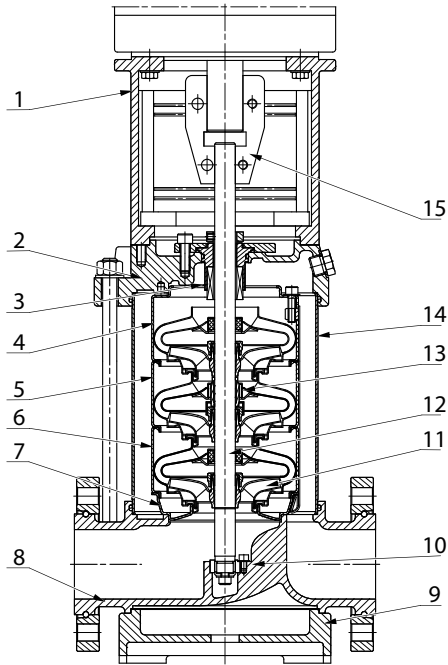


barmesapumps.com

Item	Name	Material	AISI/ASTM
1	Motor		
2	Pump Head	Cast iron	ASTM25B
4	Mechanical seal		
5	Top diffuser	Stainless steel	AISI304
6	Diffuser	Stainless steel	AISI304
7	Support diffuser	Stainless steel	AISI304
8	Inducer	Stainless steel	AISI304
9	Inlet and outlet chamber	Cast iron	ASTM25B
11	Bearing	Tungsten carbide	
12	Impeller	Stainless steel	AISI304
13	Shaft	Stainless steel	AISI304 AISI316L
14	Impeller sleeve	Stainless steel	AISI304
15	Cylinder	Stainless steel	AISI304
16	Coupling	Carbon steel	

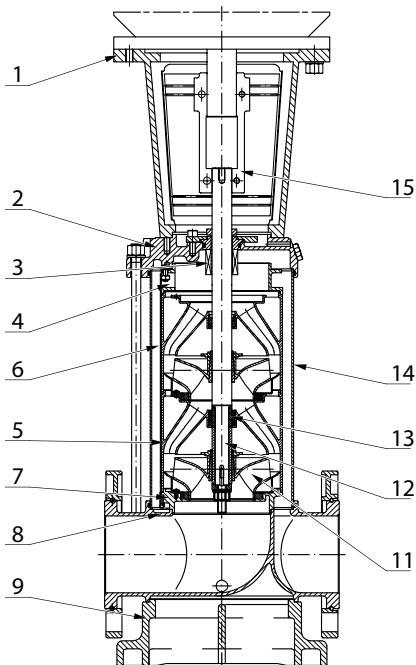
► MATERIAL

BMV32, BMV42, BMV65, BMV85



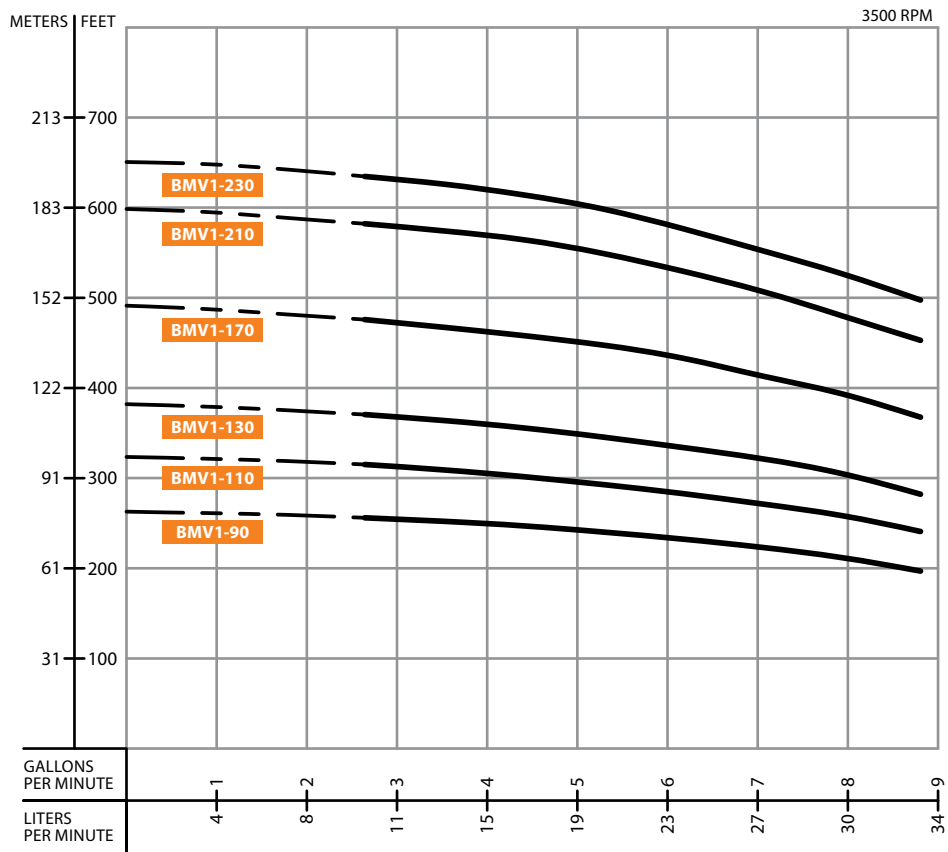
Item	Name	Material	AISI/ASTM
1	Bracket	Cast iron	ASTM25B
2	Pump head	Cast iron	ASTM25B
3	Mechanical seal		
4	Top diffuser	Stainless steel	AISI304
5	Support diffuser	Stainless steel	AISI304
6	Diffuser	Stainless steel	AISI304
7	Inducer	Stainless steel	AISI304
8	Inlet and outlet chamber	Cast iron	ASTM25B
9	Base plate	Cast iron	ASTM25B
10	Bottom bearing	Tungsten carbide	
11	Impeller	Stainless steel	AISI304
12	Shaft	Stainless steel	AISI304 AISI316L ANSI 431
13	Intermediate bearing	Tungsten carbide	
14	Cylinder	Stainless steel	AISI304
15	Coupling	Carbon steel	
	Rubber parts	NBR	

BMV120, BMV150

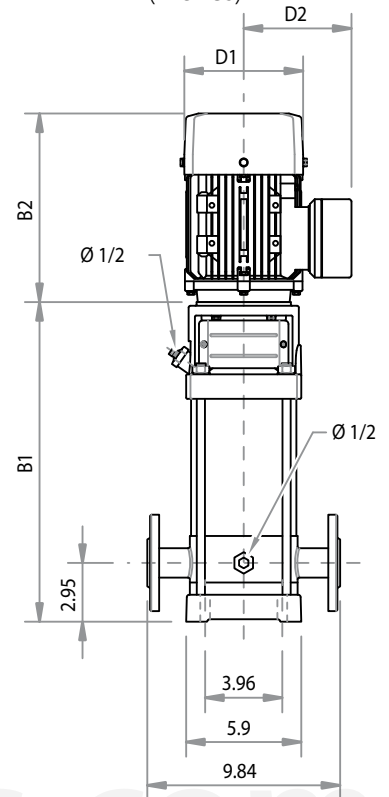


Item	Name	Material	AISI/ASTM
1	Bracket	Cast iron	ASTM25B
2	Pump head	Cast iron	ASTM 80-55-06
3	Mechanical seal		
4	Discharge	Stainless steel	AISI304
5	Support diffuser	Stainless steel	AISI304
6	Diffuser	Stainless steel	AISI304
7	Inducer	Stainless steel	AISI304
8	Inlet and outlet chamber	Cast iron	ASTM 80-55-06
9	Base plate	Cast iron	ASTM 80-55-06
11	Impeller	Stainless steel	AISI304
12	Shaft	Stainless steel	AISI304
13	Bearing	Tungsten carbide	
14	Cylinder	Stainless steel	AISI304
15	Coupling	Carbon steel	
	Rubber parts	NBR	

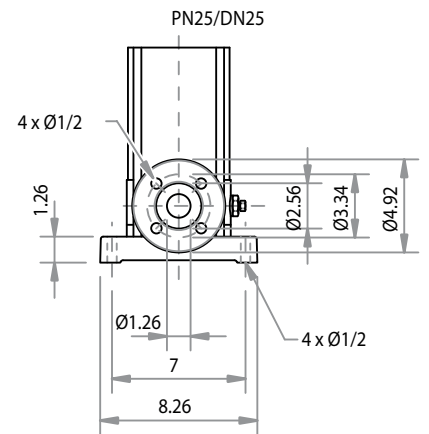
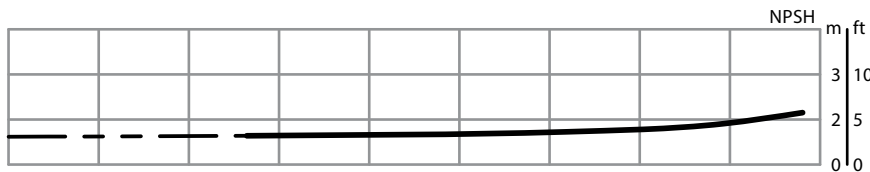
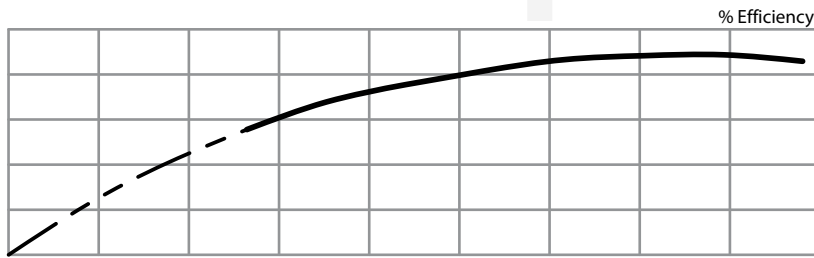
CURVE BMV1



Installation Diagram (inches)



barmesapumps.com



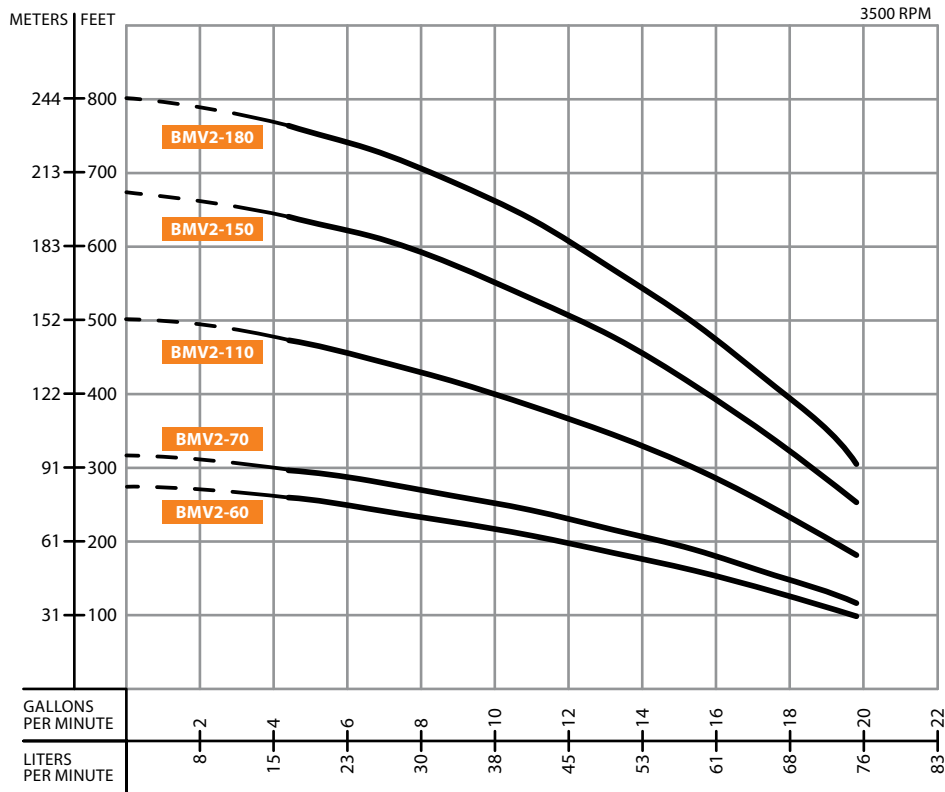
Performance Table

MODEL	STAGES	HP	Q (GPM)	H (ft)							
				2.6	3.5	4.4	5.3	6.2	7	7.9	8.8
BMV1-90-103	9	1		249.3	246.1	242.8	239.5	232.9	216.5	210.0	196.9
BMV1-110-153	11	1.5		311.7	305.1	295.3	285.4	278.9	265.7	255.9	239.5
BMV1-130-153	13	1.5		367.5	360.9	351.0	344.5	328.1	311.7	305.1	282.2
BMV1-170-203	17	2		472.4	462.6	456.0	449.5	433.1	406.8	393.7	367.5
BMV1-210-303	21	3		580.7	570.9	564.3	551.2	531.5	502.0	482.3	452.8
BMV1-230-303	23	3		633.2	623.4	616.8	603.7	570.9	547.9	528.2	498.7

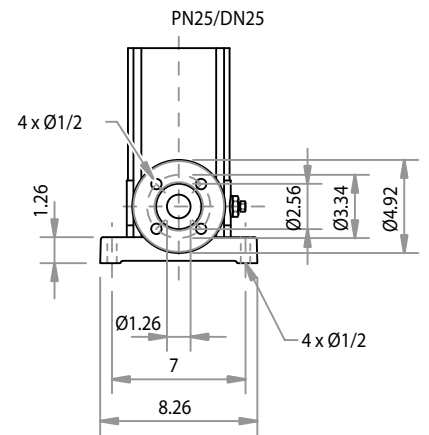
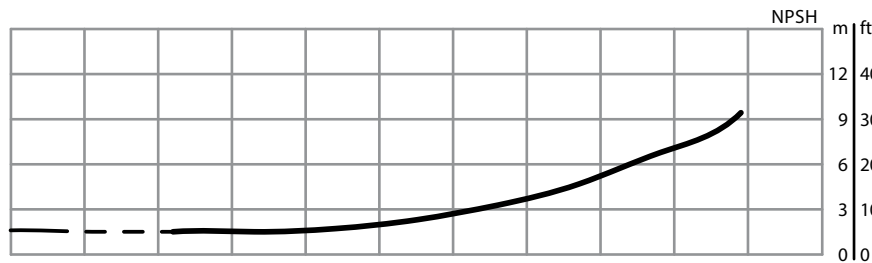
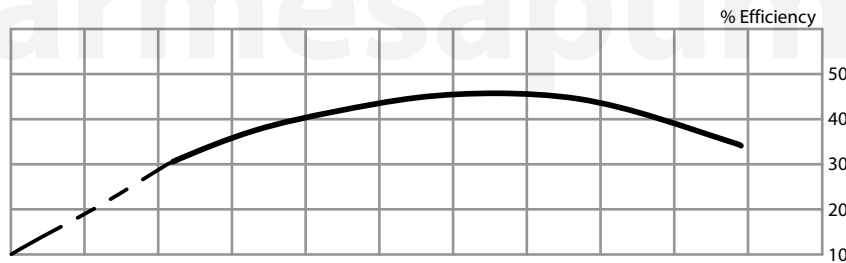
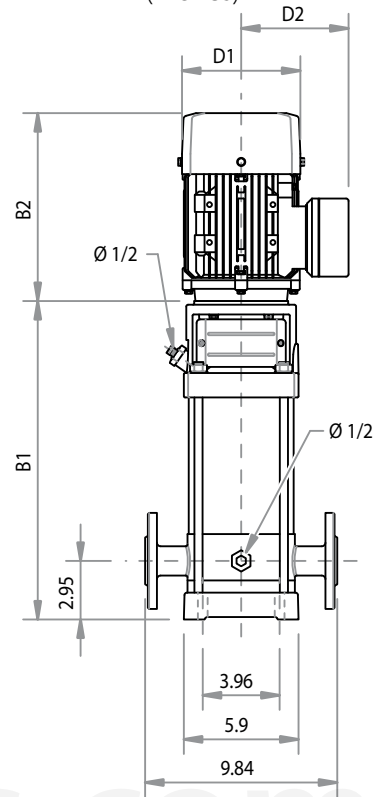
Size and Weight

Size (inches)						Weight (lb)
B1	B2	B1+B2	D1	D2		
15.5	9.6	25.2	6.7	5.6	61.7	
16.9	9.6	26.6	6.7	5.6	63.9	
18.3	9.6	28.0	6.7	5.6	68.3	
21.6	11.4	33.0	7.5	6.1	83.8	
24.4	11.4	35.8	7.5	6.1	92.6	
25.8	11.4	37.2	7.5	6.1	94.8	

CURVE BMV2



Installation Diagram (inches)



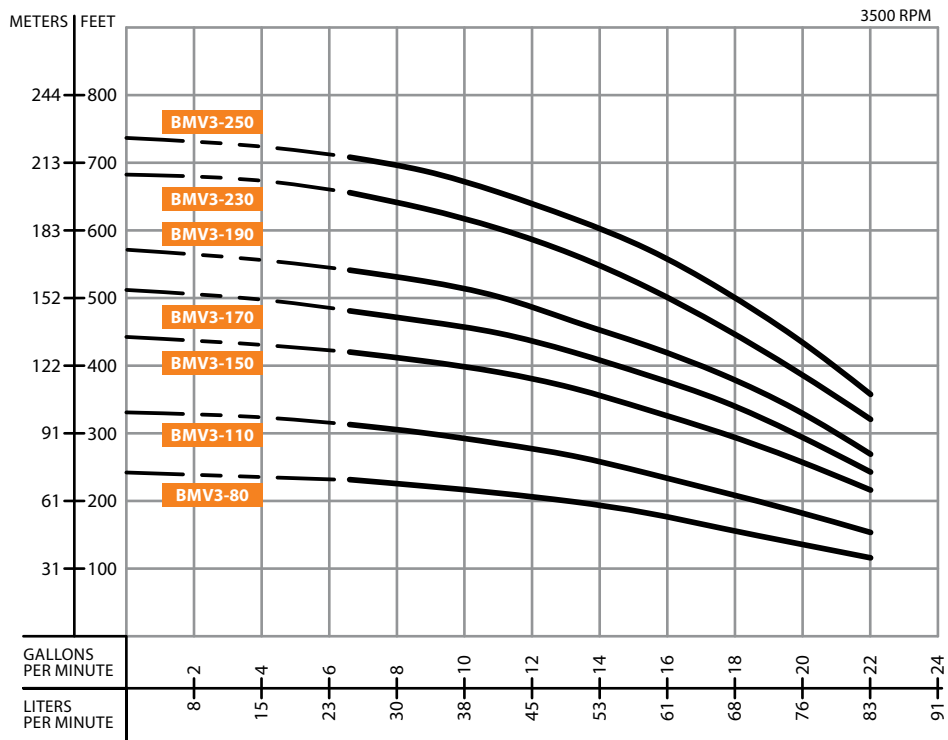
Performance Table

MODEL	STAGES	HP	Q (GPM)	H (ft)							
				4.4	6.6	8.8	11	13.2	15.4	17.6	19.8
BMV2-60-153	6	1.5		255.9	242.8	226.4	206.7	183.7	160.8	131.2	98.4
BMV2-70-203	7	2		298.6	282.2	265.7	242.8	216.5	187.0	154.2	114.8
BMV2-110-303	11	3		469.2	446.2	419.9	380.6	341.2	295.3	246.1	183.7
BMV2-150-403	15	4		639.8	610.2	577.4	524.9	465.9	410.1	337.9	252.6
BMV2-180-503	18	5.5		767.7	748.0	695.5	639.8	561.0	495.4	413.4	308.4

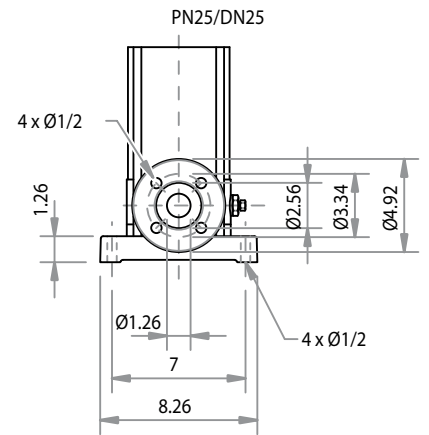
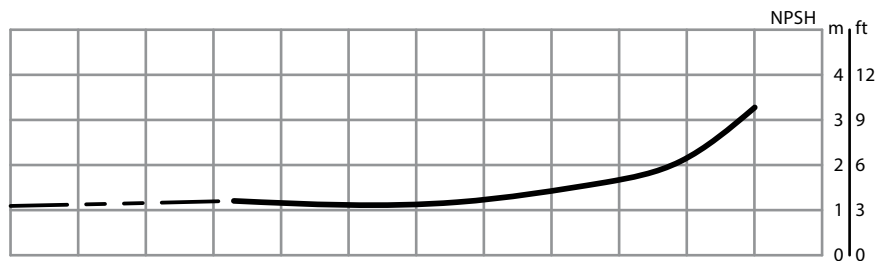
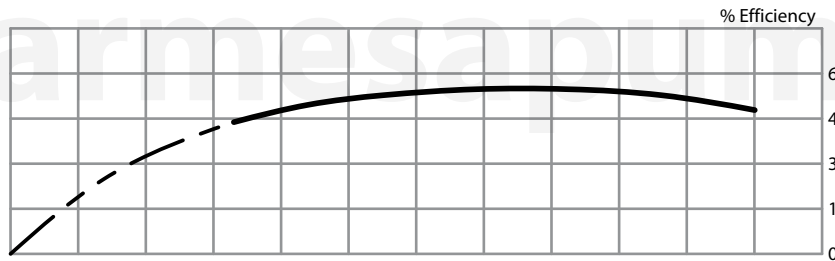
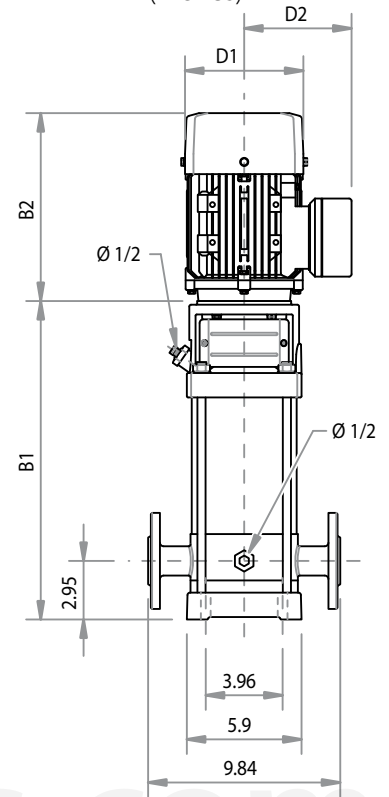
Size and Weight

B1	B2	B1+B2	Size (inches)			Weight (lb)
			D1	D2		
13.4	9.6	23.0	6.7	5.6	57.3	
14.5	11.4	25.9	7.5	6.1	70.5	
17.3	11.4	28.7	7.5	6.1	81.6	
20.6	12.4	33.0	7.8	6.5	99.2	
22.7	13.2	35.9	9.1	7.4	119.0	

CURVE BMV3



Installation Diagram (inches)



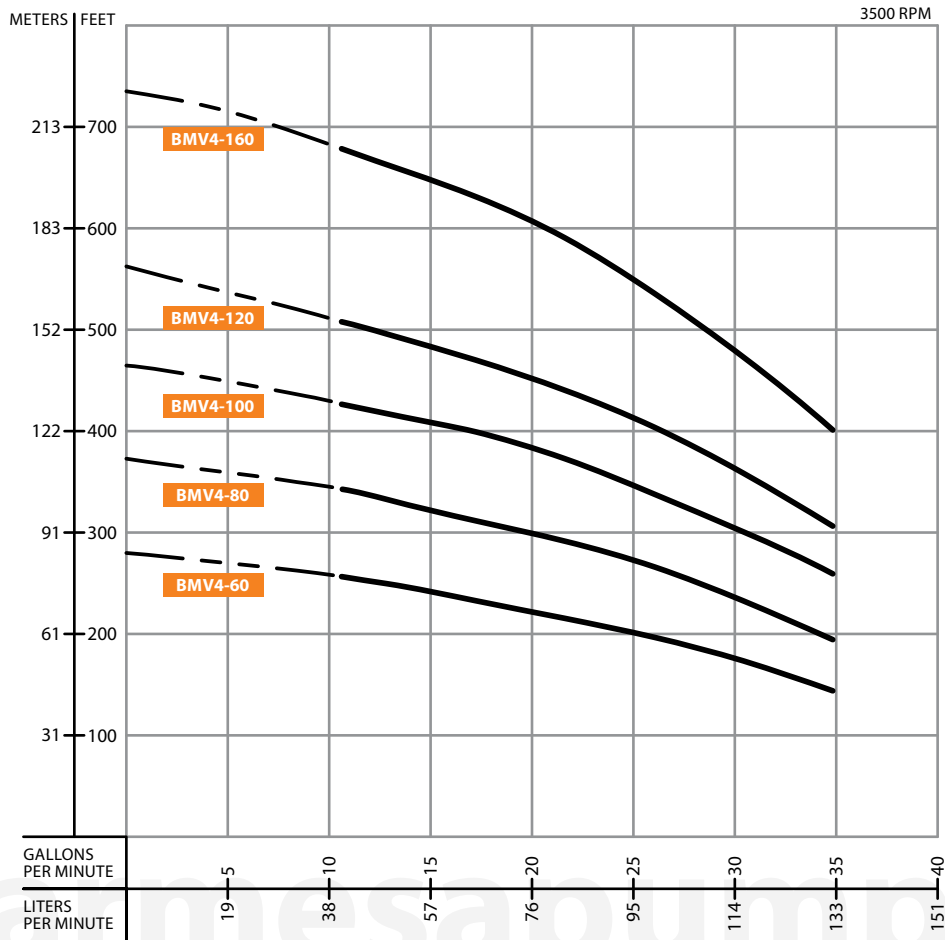
Performance Table

MODEL	STAGES	HP	Q (GPM)	H (ft)							
				6.6	8.8	11	13.2	15.4	17.6	19.8	22
BMV3-80-153	8	1.5		229.7	219.8	210.0	200.1	173.9	160.8	144.4	114.8
BMV3-110-203	11	2		315.0	301.8	285.4	269.0	242.8	226.4	193.6	157.5
BMV3-150-303	15	3		423.2	413.4	393.7	367.5	324.8	305.1	265.7	213.3
BMV3-170-303	17	3		482.3	469.2	449.5	419.9	374.0	347.8	298.6	242.8
BMV3-190-403	19	4		541.3	524.9	502.0	465.9	403.5	387.1	334.6	269.0
BMV3-230-403	23	4		656.2	636.5	607.0	570.9	505.2	465.9	400.3	321.5
BMV3-250-503	25	5.5		711.9	692.3	662.7	613.5	547.9	505.2	439.6	354.3

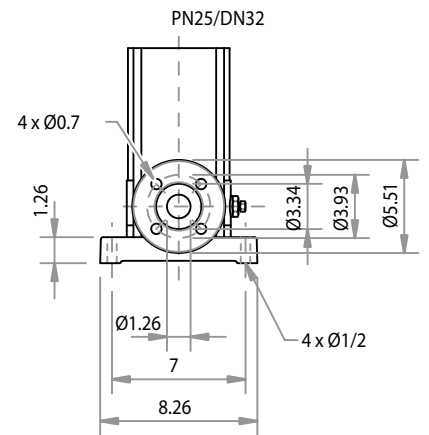
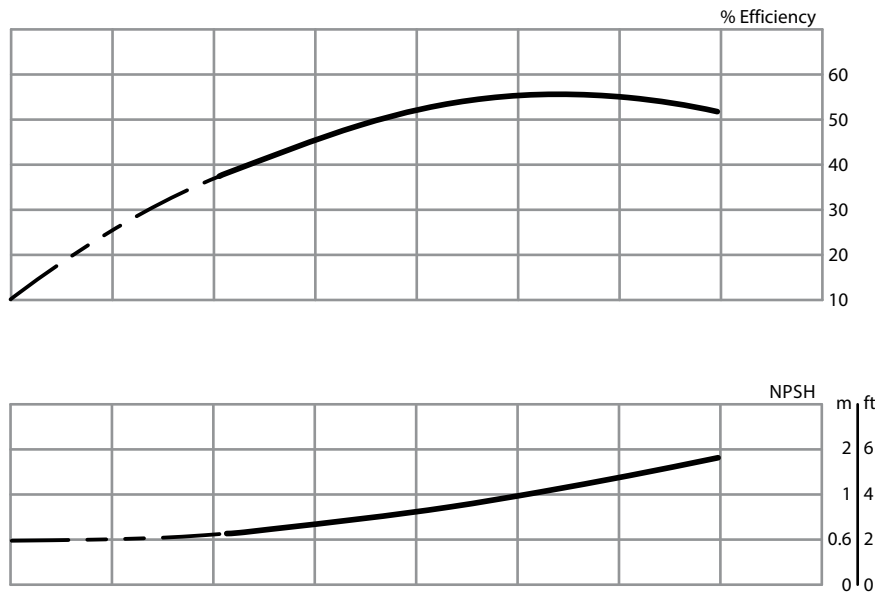
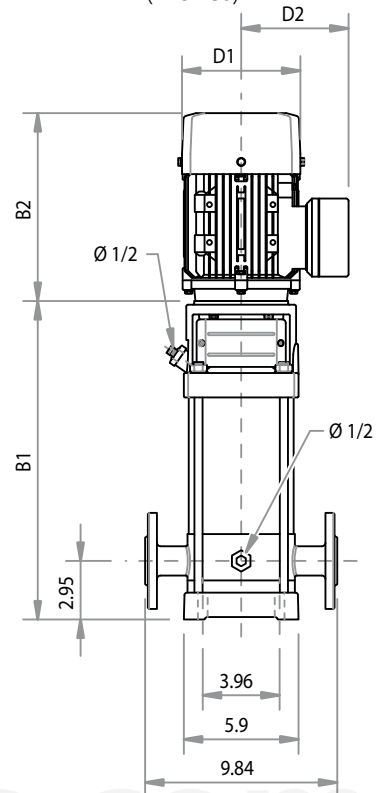
Size and Weight

Size (inches)						Weight (lb)
B1	B2	B1+B2	D1	D2		
14.8	9.6	24.4	6.7	5.6	59.5	
17.3	11.4	28.7	7.5	6.1	75.0	
20.2	11.4	31.6	7.5	6.1	86.0	
21.6	11.4	33.0	7.5	6.1	88.2	
23.4	12.4	35.8	7.8	6.5	105.8	
26.2	12.4	38.6	7.8	6.5	110.2	
27.6	13.2	40.8	9.1	7.4	127.9	

CURVE BMV4



Installation Diagram (inches)



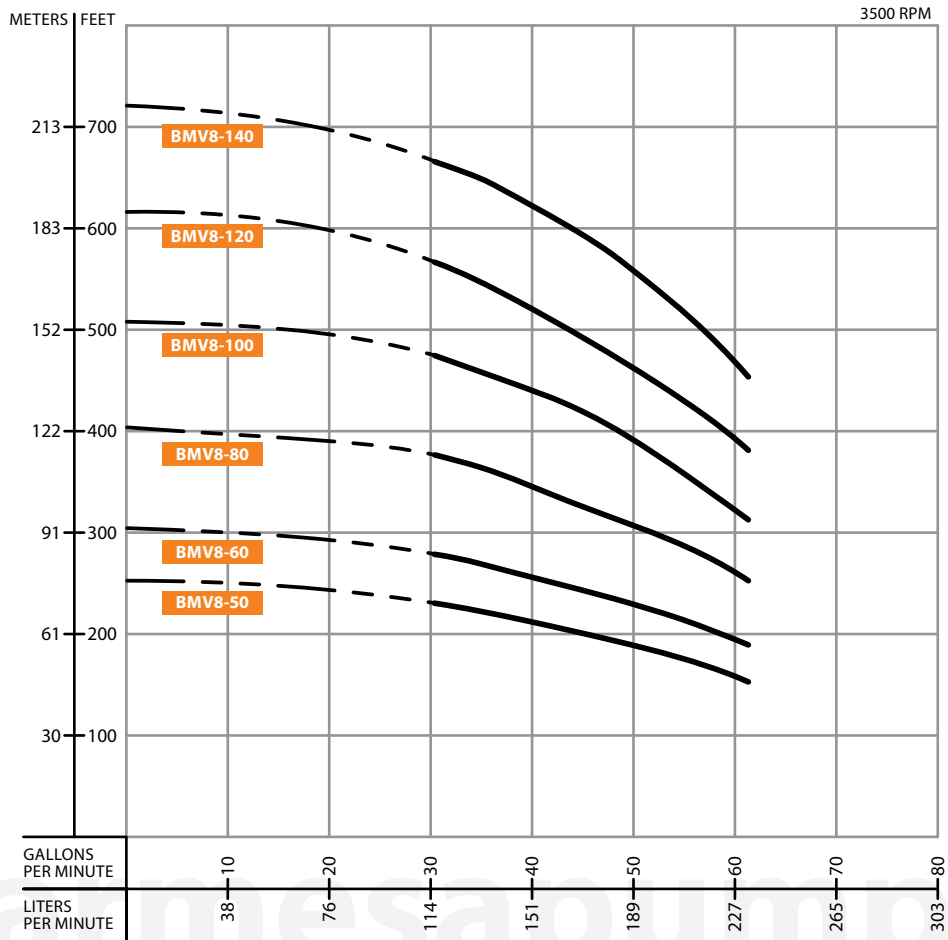
Performance Table

MODEL	STAGES	HP	Q (GPM)	H (ft)						
				11	13.2	17.6	22	26.4	30.8	35.2
BMV4-60-303	6	3		255.9	246.1	236.2	219.8	193.6	177.2	154.2
BMV4-80-403	8	4		341.2	328.1	311.7	295.3	259.2	236.2	206.7
BMV4-100-503	10	5.5		426.5	410.1	393.7	370.7	334.6	295.3	262.5
BMV4-120-503	12	5.5		511.8	492.1	475.7	446.2	400.3	357.6	315.0
BMV4-160-753	16	7.5		679.1	659.4	643.0	600.4	541.3	479.0	419.9

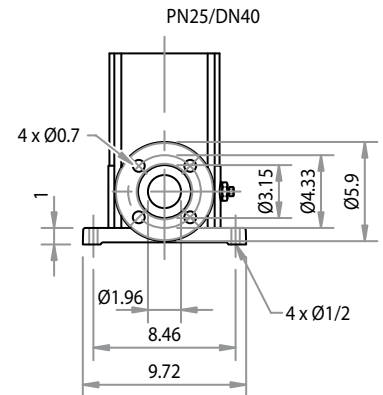
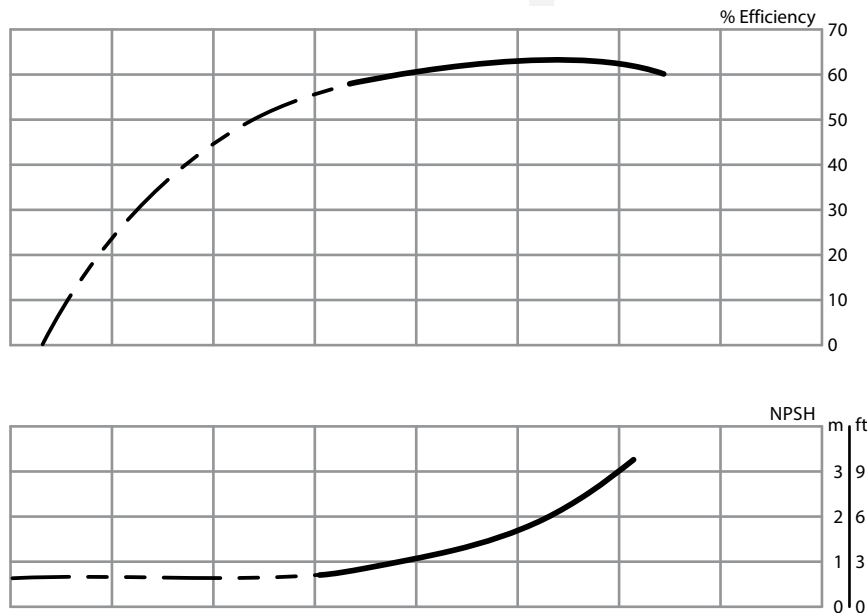
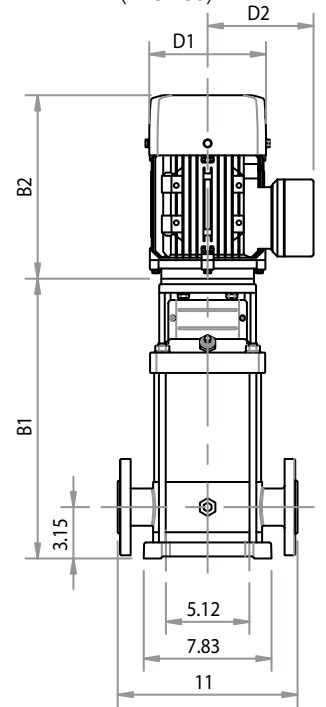
Size and Weight

Size (inches)					Weight (lb)
B1	B2	B1+B2	D1	D2	
15.9	11.4	27.3	7.5	6.1	77.2
18.4	13.6	32.0	7.8	6.5	92.6
20.6	13.2	33.7	9.1	7.4	112.4
22.7	13.2	35.9	9.1	7.4	114.6
27.7	16.9	44.6	10.2	8.2	145.5

CURVE BMV8



Installation Diagram (inches)



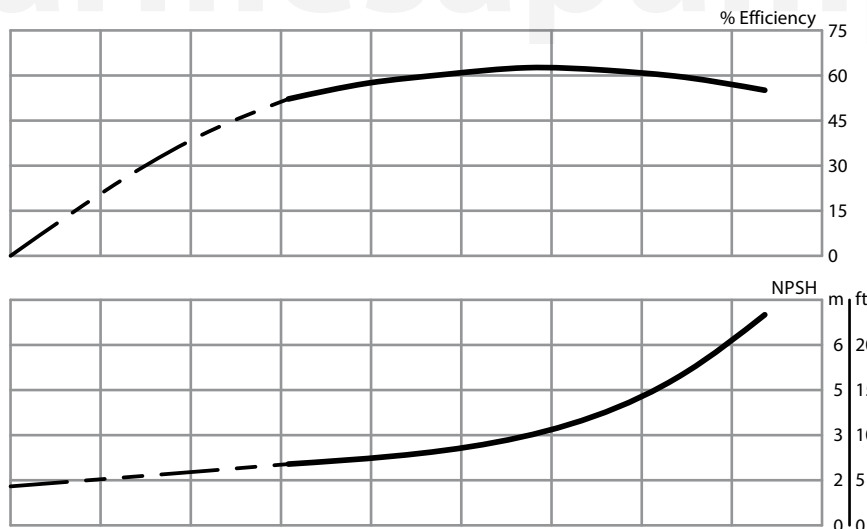
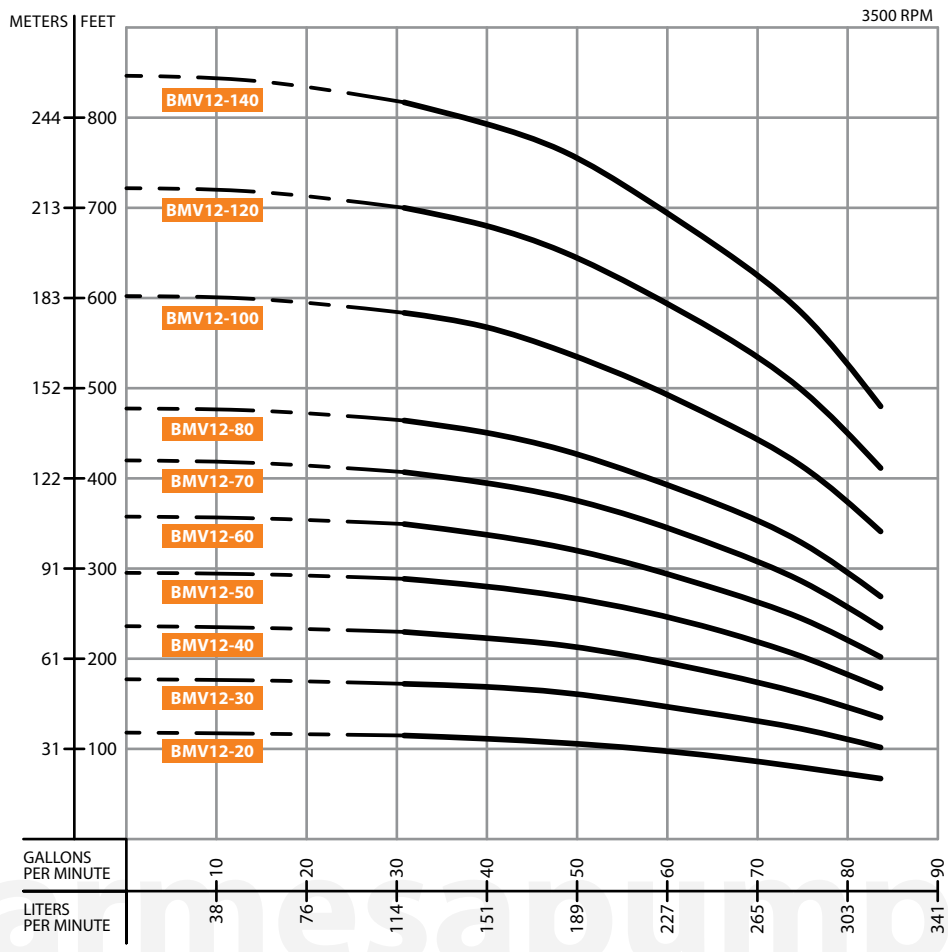
Performance Table

MODEL	STAGES	HP	Q (GPM)	Flow Rate (GPM)							
				30.8	35.2	39.6	44	48.4	52.8	57.2	61.6
BMV8-50-403	5	4	H (ft)	229.7	223.1	213.3	206.7	193.6	183.7	170.6	154.2
BMV8-60-503	6	5.5		278.9	269.0	255.9	249.3	236.2	223.1	203.4	187.0
BMV8-80-753	8	7.5		377.3	360.9	344.5	331.4	318.2	298.6	275.6	246.1
BMV8-100-1003	10	10		475.7	459.3	433.1	413.4	400.3	377.3	344.5	311.7
BMV8-120-1003	12	10		567.6	547.9	524.9	498.7	482.3	433.1	410.1	377.3
BMV8-140-1503	14	15		662.7	639.8	616.8	587.3	570.9	534.8	482.3	442.9

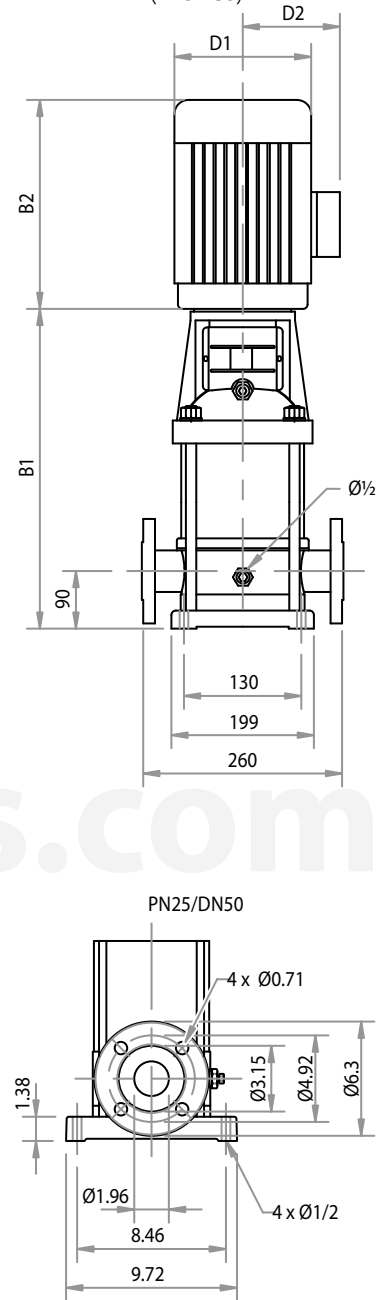
Size and Weight

Size (inches)						Weight (lb)
B1	B2	B1+B2	D1	D2		
18.0	12.4	30.4	7.8	6.5	110.2	
19.2	13.2	32.4	9.1	7.4	127.9	
22.3	16.9	39.3	10.2	8.2	156.5	
24.7	16.9	41.6	10.2	8.2	176.4	
27.0	16.9	44.0	10.2	8.2	180.8	
32.9	19.3	52.2	13.0	10.0	337.3	

CURVE BMV12



Installation Diagram (inches)



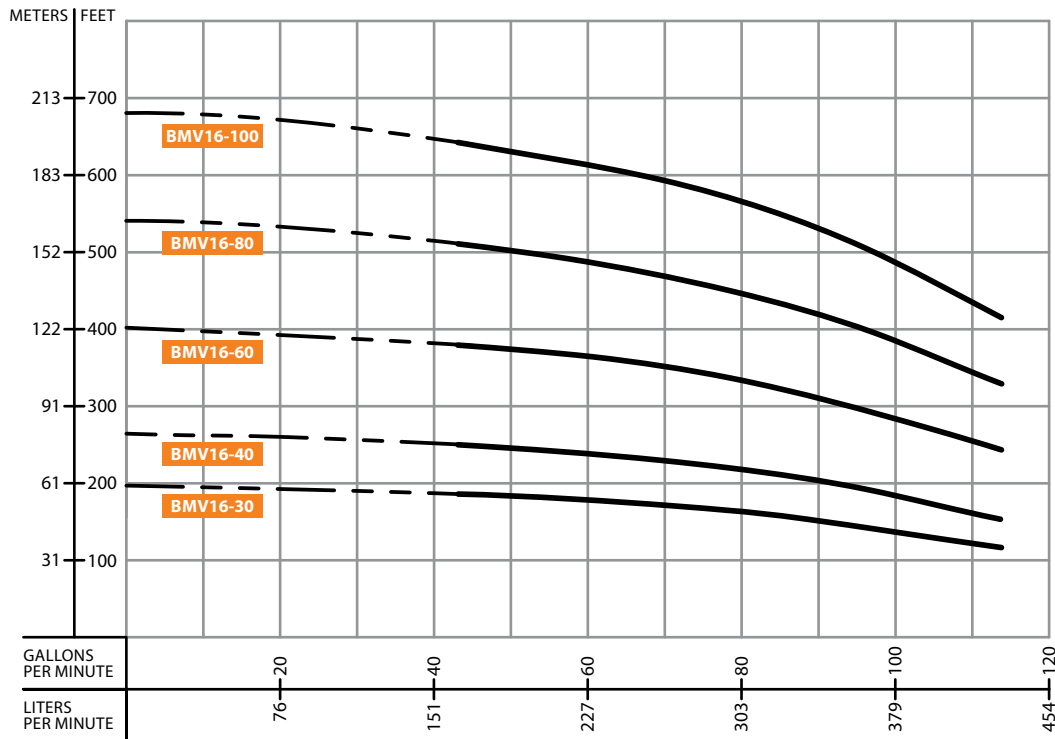
Performance Table

MODEL	STAGES	HP	Q (GPM)	H (ft)								
				30.8	39.6	48.4	52.8	57.2	66	74.8	83.7	
BMV12-20-303	2	3		114.8	111.5	106.6	105.0	100.1	88.6	80.4	67.3	
BMV12-30-503	3	5.5		172.2	169.0	164.0	157.5	150.9	136.2	123.0	101.7	
BMV12-40-753	4	7.5		229.7	223.1	214.9	210.0	201.8	180.4	162.4	134.5	
BMV12-50-753	5	7.5		288.7	282.2	269.0	262.5	252.6	229.7	203.4	167.3	
BMV12-60-1003	6	10		351.0	337.9	324.8	315.0	301.8	275.6	246.1	200.1	
BMV12-70-1003	7	10		406.8	397.0	380.6	367.5	351.0	318.2	288.7	232.9	
BMV12-80-1503	8	15		462.6	449.5	433.1	419.9	400.3	364.2	331.4	269.0	
BMV12-90-1503	9	15		-	-	-	-	-	-	-	-	
BMV12-100-1503	10	15		584.0	567.6	544.6	528.2	502.0	459.3	419.9	341.2	
BMV12-110-2003	11	20		-	-	-	-	-	-	-	-	
BMV12-120-2003	12	20		698.8	682.4	652.9	633.2	607.0	551.2	505.2	410.1	
BMV12-130-2003	13	30		-	-	-	-	-	-	-	-	
BMV12-140-2003	14	20		816.9	794.0	764.4	738.2	708.7	649.6	590.6	475.7	

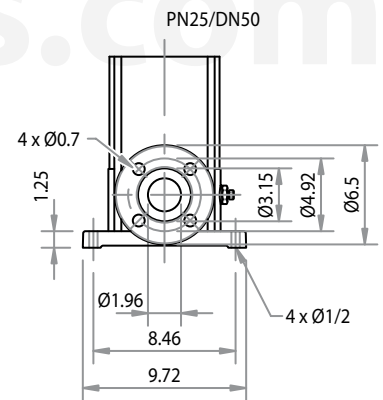
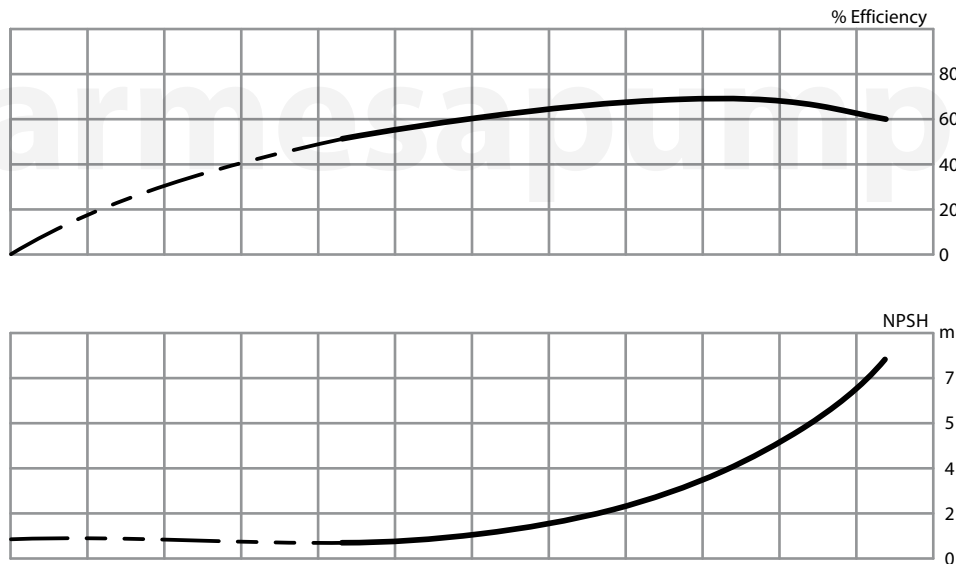
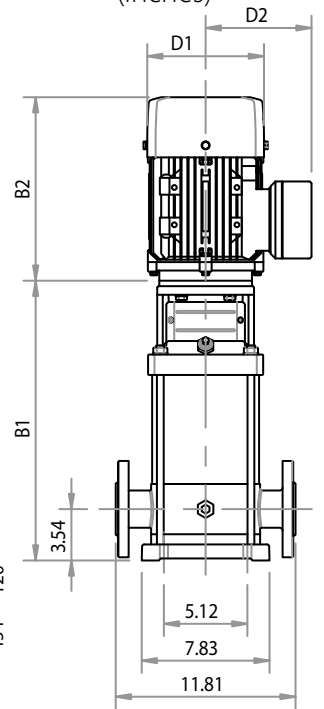
Size and Weight

Size (inches)						Weight (lb)
B1	B2	B1+B2	D1	D2		
14.4	11.4	25.9	7.5	6.1	90.4	
16.0	13.2	29.2	9.1	7.4	123.5	
18.0	16.9	34.9	10.2	8.2	152.1	
19.2	16.9	36.1	10.2	8.2	156.5	
20.4	16.9	37.3	10.2	8.2	169.8	
21.5	16.9	38.5	10.2	8.2	172.0	
26.2	19.3	45.5	13.0	10.0	324.1	
-	-	-	-	-	-	
28.5	19.3	47.8	13.0	10.0	332.9	
-	-	-	-	-	-	
30.9	19.3	50.2	13.0	10.0	361.6	
-	-	-	-	-	-	
33.3	19.3	52.6	13.0	10.0	368.2	

CURVE BMV16



Installation Diagram (inches)



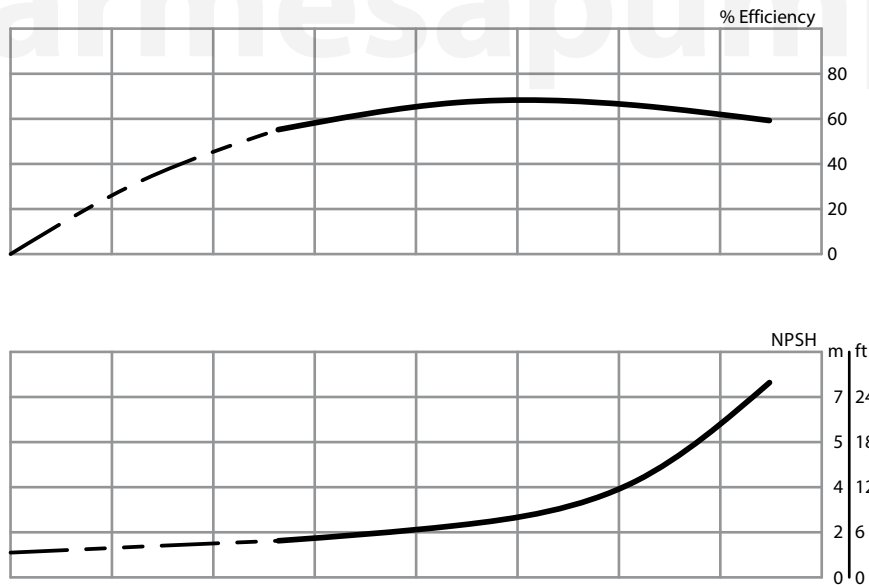
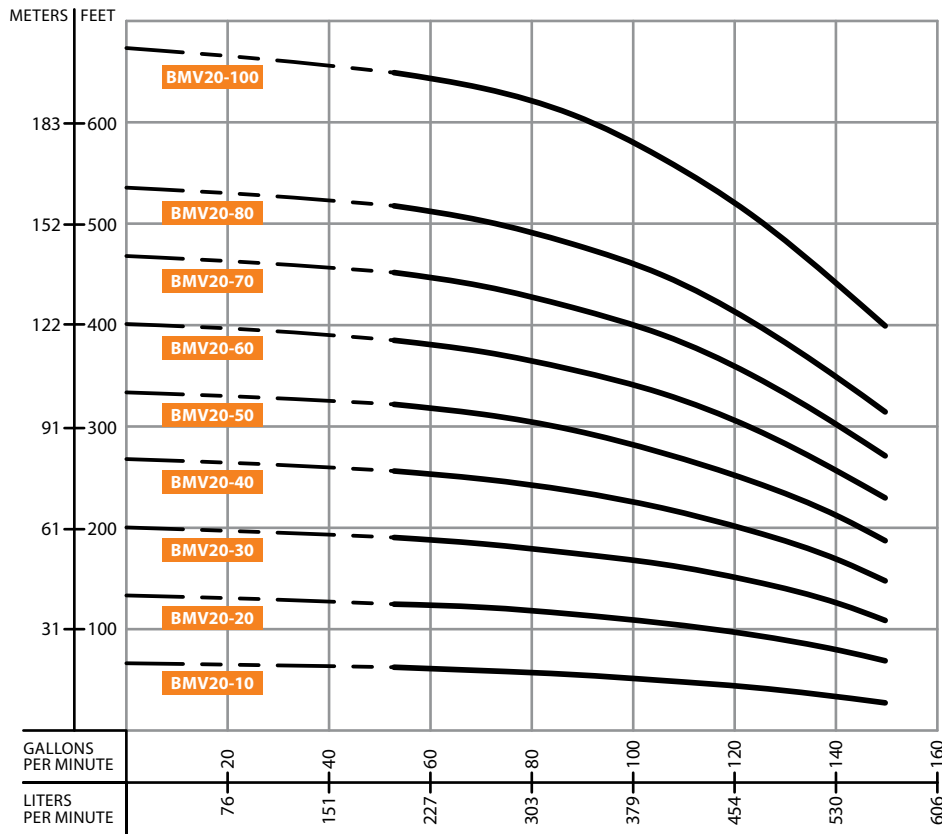
Size and Weight

Size (inches)					Weight (lb)
B1	B2	B1+B2	D1	D2	
18.6	16.9	35.5	10.2	8.2	149.9
20.4	16.9	37.3	10.2	8.2	165.3
27.4	19.3	46.7	13.0	10.0	330.7
30.9	19.3	50.2	13.0	10.0	359.4
34.4	21.7	56.1	13.0	10.0	410.1

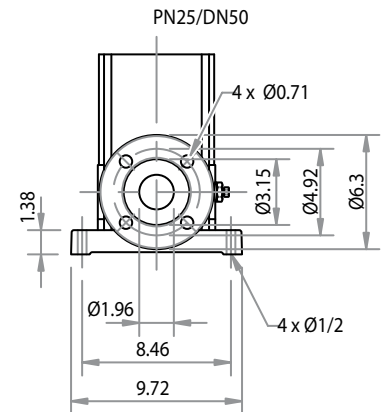
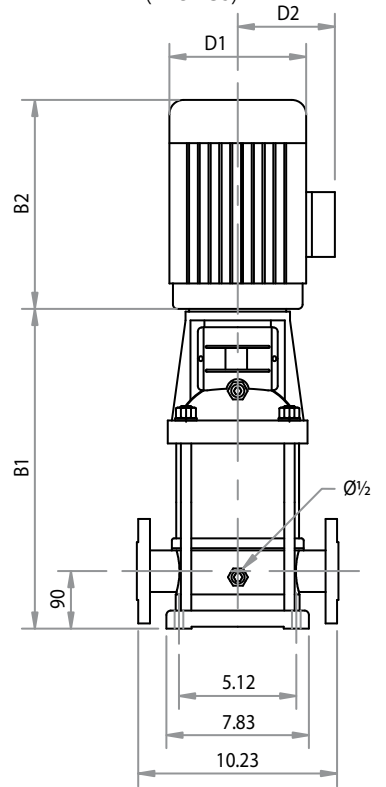
Performance Table

MODEL	STAGES	HP	Q (GPM)	H (ft)										
			44	52.8	61.6	70.4	79.3	88.1	96.9	105.7	114.5			
BMV16-30-753	3	7.5	187.0	183.7	180.4	177.2	167.3	157.5	147.6	131.2	118.1			
BMV16-40-1003	4	10	249.3	246.1	239.5	236.2	223.1	210.0	196.9	177.2	160.8			
BMV16-60-1503	6	15	377.3	370.7	364.2	354.3	334.6	315.0	298.6	269.0	246.1			
BMV16-80-2003	8	20	508.5	498.7	485.6	472.4	449.5	426.5	400.3	364.2	331.4			
BMV16-100-2503	10	25	646.3	629.9	613.5	593.8	570.9	541.3	502.0	456.0	416.7			

CURVE BMV20



Installation Diagram (inches)



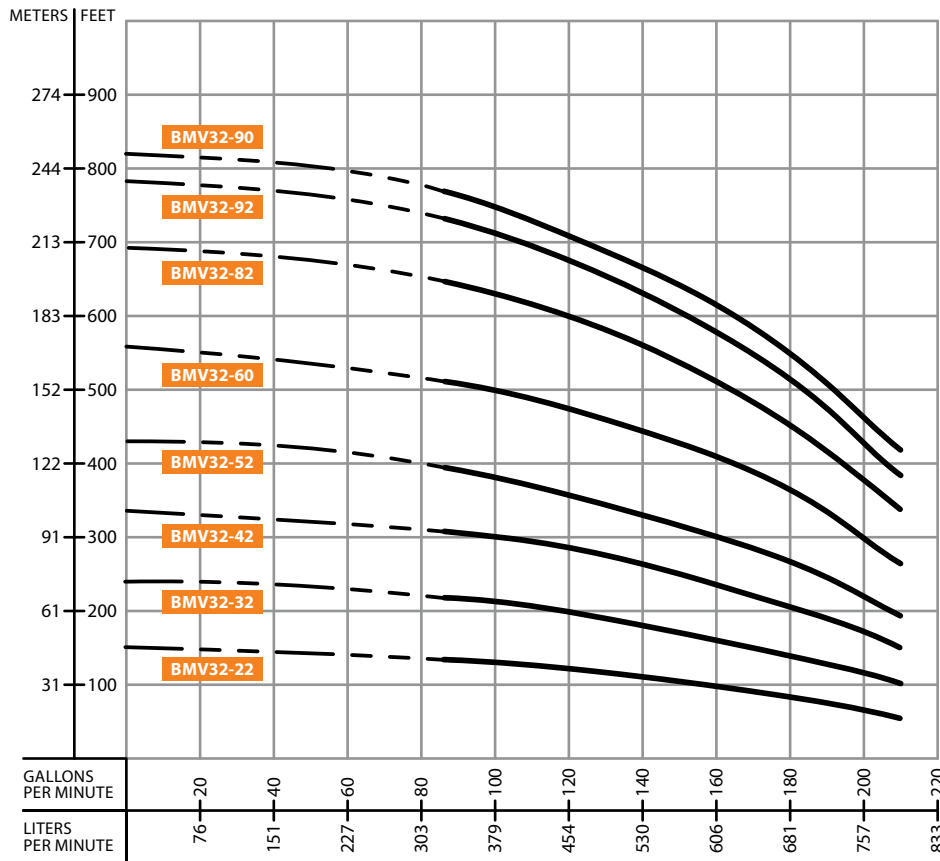
Performance Table

MODEL	STAGES	HP	Q (GPM)	H (ft)						
				52.8	70.4	88.1	105.7	123.3	140.9	149.7
BMV20-10-303	1	3		62.3	59.1	55.8	49.2	42.7	32.8	27.9
BMV20-20-503	2	5.5		124.7	121.4	114.8	105.0	95.1	78.7	68.9
BMV20-30-753	3	7.5		190.3	183.7	173.9	164.0	147.6	124.7	108.3
BMV20-40-1003	4	10		255.9	246.1	236.2	219.8	196.9	167.3	147.6
BMV20-50-1503	5	15		321.5	308.4	295.3	278.9	246.1	210.0	187.0
BMV20-60-1503	6	15		387.1	370.7	354.3	334.6	298.6	252.6	229.7
BMV20-70-2003	7	20		452.8	436.4	416.7	390.4	351.0	298.6	272.3
BMV20-80-2003	8	20		518.4	502.0	479.0	449.5	403.5	344.5	315.0
BMV20-100-2503	10	25		649.6	633.2	607.0	564.3	508.5	436.4	400.3

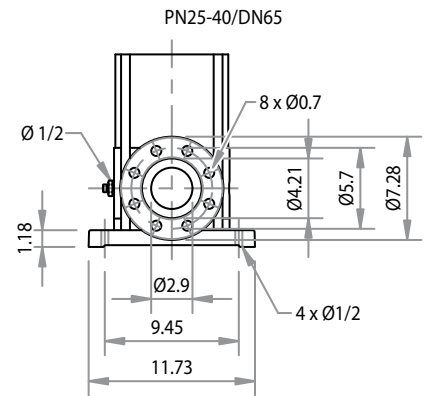
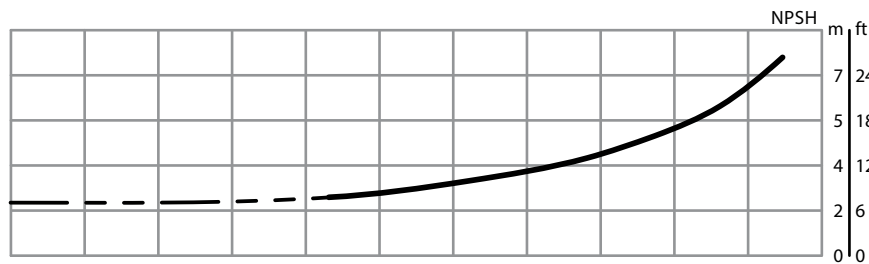
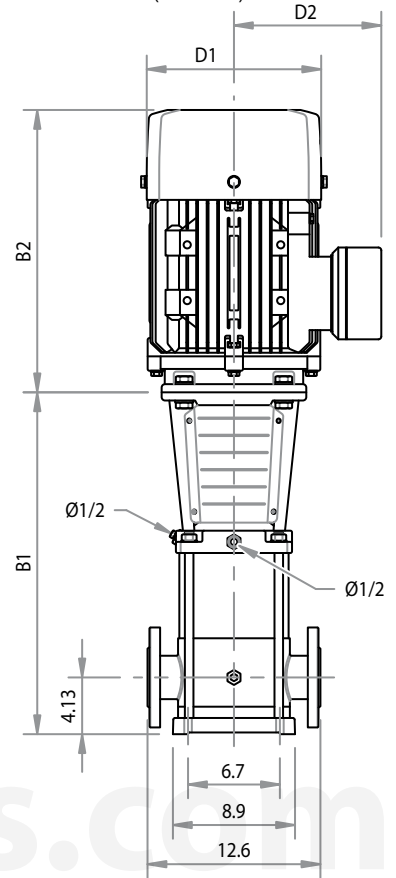
Size and Weight

Size (inches)						Weight (lb)
B1	B2	B1+B2	D1	D2		
15.6	11.4	27.0	7.5	6.1	90.4	
16.0	13.2	29.2	9.1	7.4	123.5	
18.6	16.9	35.5	10.2	8.2	152.1	
20.4	16.9	37.3	10.2	8.2	174.2	
25.6	19.3	44.9	13.0	10.0	326.3	
27.4	19.3	46.7	13.0	10.0	330.7	
29.1	19.3	48.4	13.0	10.0	357.1	
30.9	19.3	50.2	13.0	10.0	359.4	
34.4	21.7	56.1	13.0	10.0	412.3	

CURVE BMV32



Installation Diagram (inches)



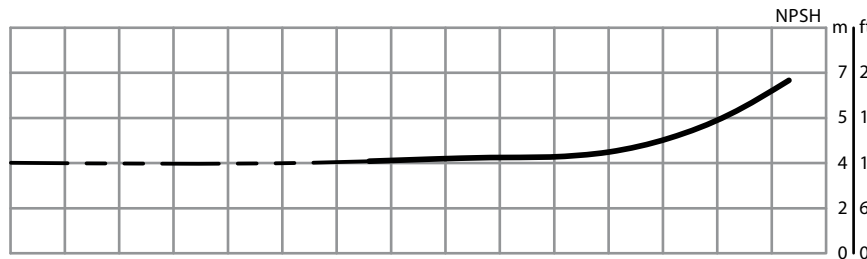
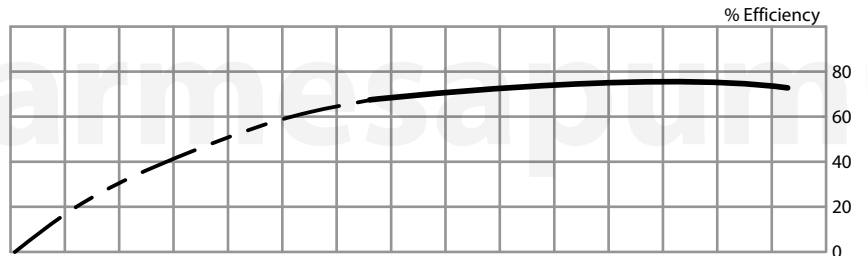
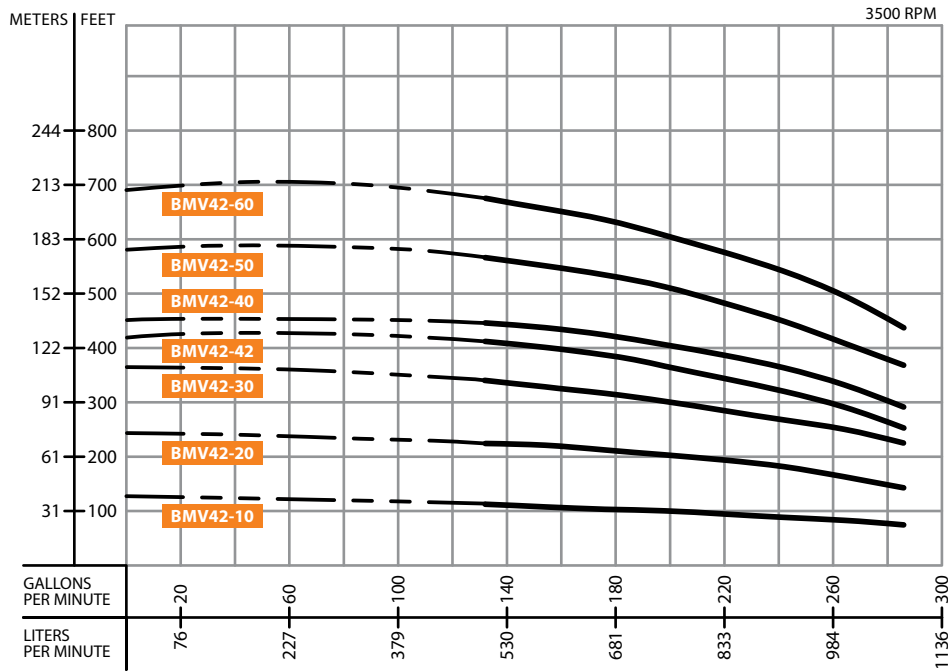
Performance Table

MODEL	STAGES	HP	Q (GPM)	H (ft)											
				88.1	105.7	123.3	140.9	158.5	176.1	193.7	211.3				
BMV32-22-753	2	7.5		134.5	131.2	124.7	114.8	101.7	88.6	72.2	55.8				
BMV32-32-1003	3	10		219.8	210.0	200.1	187.0	170.6	150.9	128.0	101.7				
BMV32-42-1503	4	15		308.4	298.6	285.4	265.7	239.5	213.3	183.7	147.6				
BMV32-52-2003	5	20		390.4	377.3	357.6	334.6	308.4	275.6	239.5	193.6				
BMV32-60-2503	6	25		508.5	492.1	472.4	446.2	413.4	374.0	328.1	265.7				
BMV32-82-3003	8	30		643.0	623.4	597.1	564.3	521.7	469.2	406.8	334.6				
BMV32-92-4003	9	40		731.6	708.7	675.9	636.5	587.3	531.5	465.9	383.9				
BMV32-90-4003	9	40		767.7	741.5	708.7	669.3	620.1	564.3	498.7	416.7				

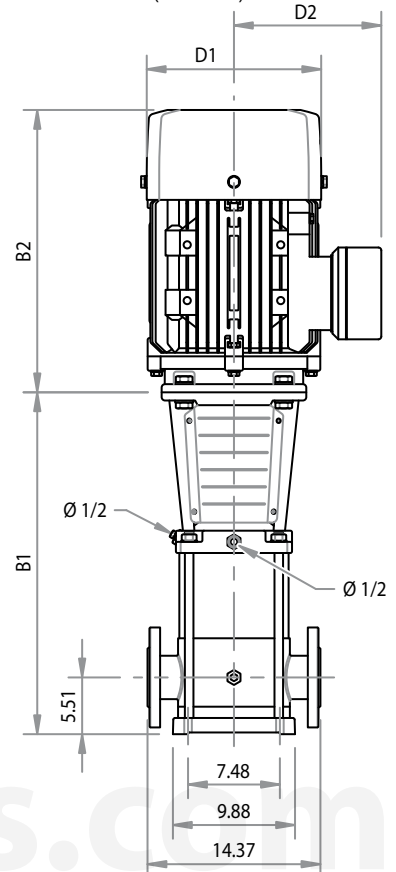
Size and Weight

Size (inches)					Weight (lb)
B1	B2	B1+B2	D1	D2	
22.6	16.9	39.6	10.2	8.2	209.4
25.4	19.3	44.7	13.0	10.0	229.3
32.3	19.3	51.6	13.0	10.0	388.0
35.0	19.3	54.3	13.0	10.0	421.1
37.8	21.7	59.4	13.0	10.0	476.2
43.3	23.2	66.5	15.7	12.2	571.0
46.1	26.0	72.0	15.7	12.2	703.3
46.1	26.0	72.0	15.7	12.2	703.3

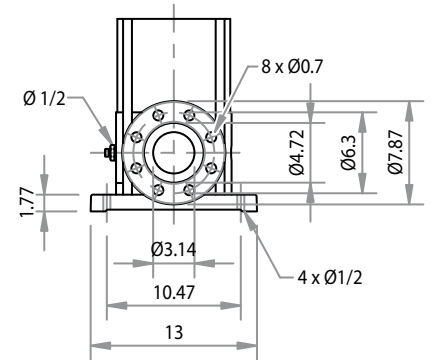
CURVE BMV42



Installation Diagram (inches)



PN16-25/DN80



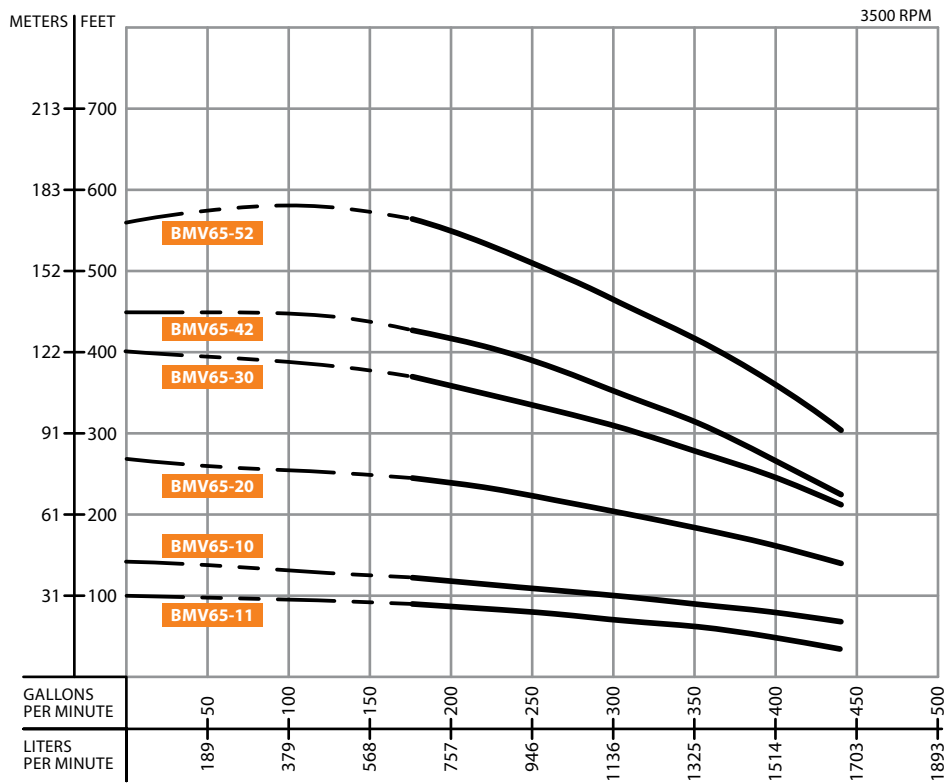
Size and Weight

Size (inches)					Weight (lb)
B1	B2	B1+B2	D1	D2	
22.1	16.9	39.0	10.2	8.2	233.7
29.4	19.3	48.7	13.0	10.0	414.5
32.6	21.7	54.3	13.0	10.0	469.6
35.7	23.2	59.0	14.2	11.2	557.8
35.7	26.0	61.7	15.7	12.2	681.2
38.9	26.0	64.9	15.7	12.2	690.0
42.0	26.0	68.0	15.7	12.2	749.6

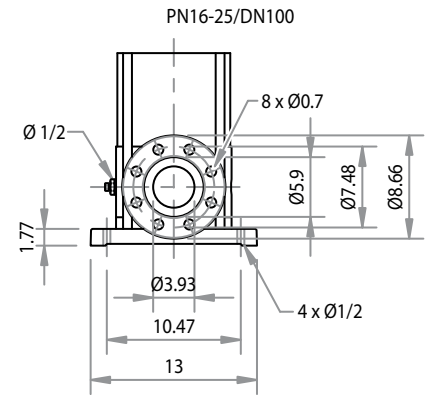
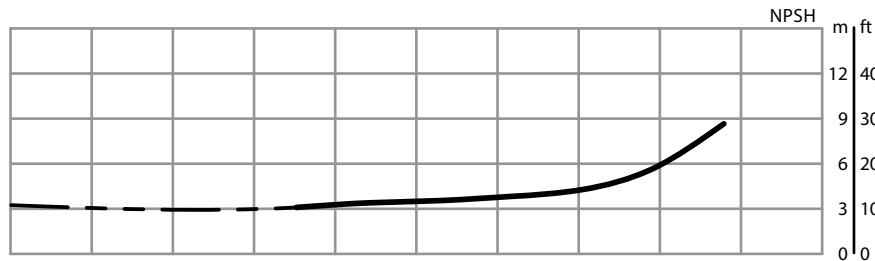
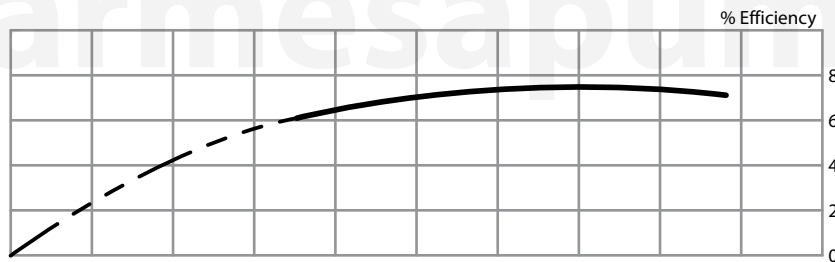
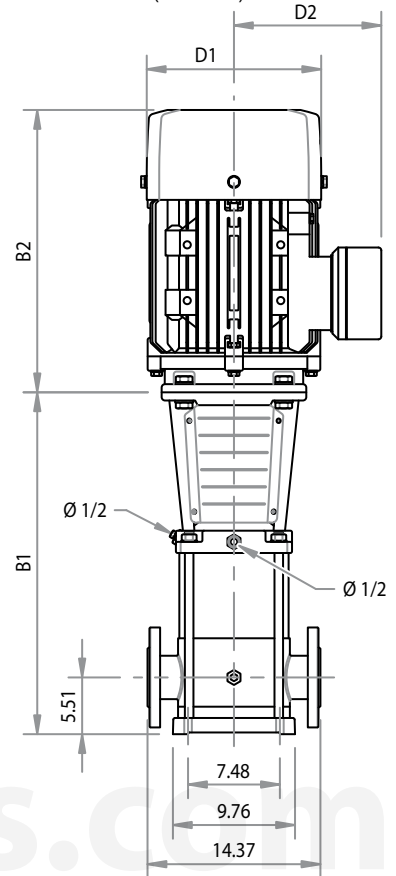
Performance Table

MODEL	STAGES	HP	Q (GPM)	H (ft)								
				132.1	154.1	176.1	184.9	198.1	220.1	242.2	264.2	286.2
BMV42-10-1003	1	10		111.5	108.3	105.0	103.3	98.4	95.1	88.6	82.0	72.2
BMV42-20-2003	2	20		226.4	219.8	213.3	206.7	200.1	193.6	180.4	164.0	144.4
BMV42-30-2503	3	25		334.6	328.1	318.2	311.7	301.8	288.7	269.0	249.3	223.1
BMV42-42-3003	4	30		410.1	397.0	387.1	377.3	367.5	344.5	321.5	292.0	255.9
BMV42-40-4003	4	40		446.2	436.4	423.2	413.4	403.5	383.9	367.5	334.6	292.0
BMV42-50-4003	5	40		561.0	544.6	528.2	518.4	505.2	475.7	452.8	413.4	367.5
BMV42-60-5003	6	50		672.6	656.2	633.2	623.4	610.2	577.4	544.6	498.7	439.6

CURVE BMV65



Installation Diagram (inches)



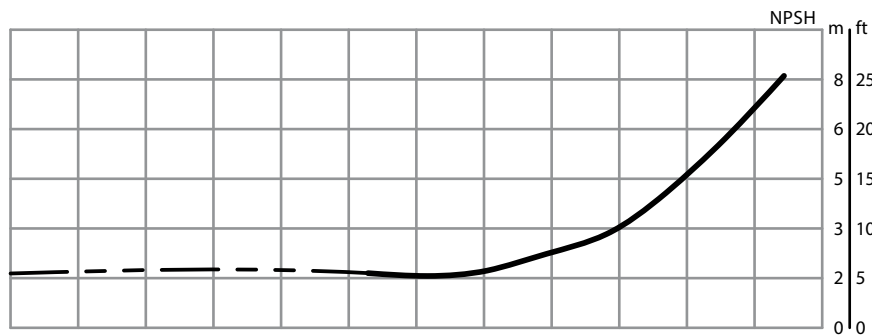
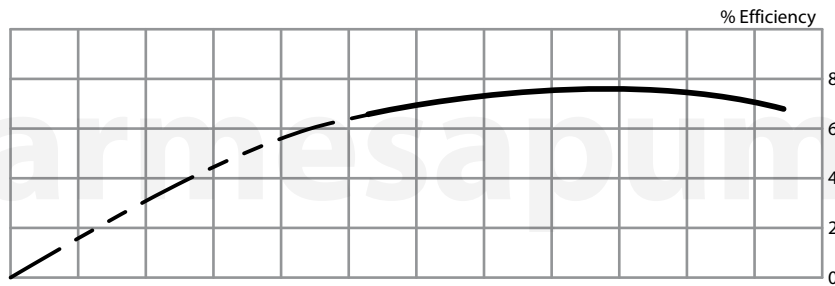
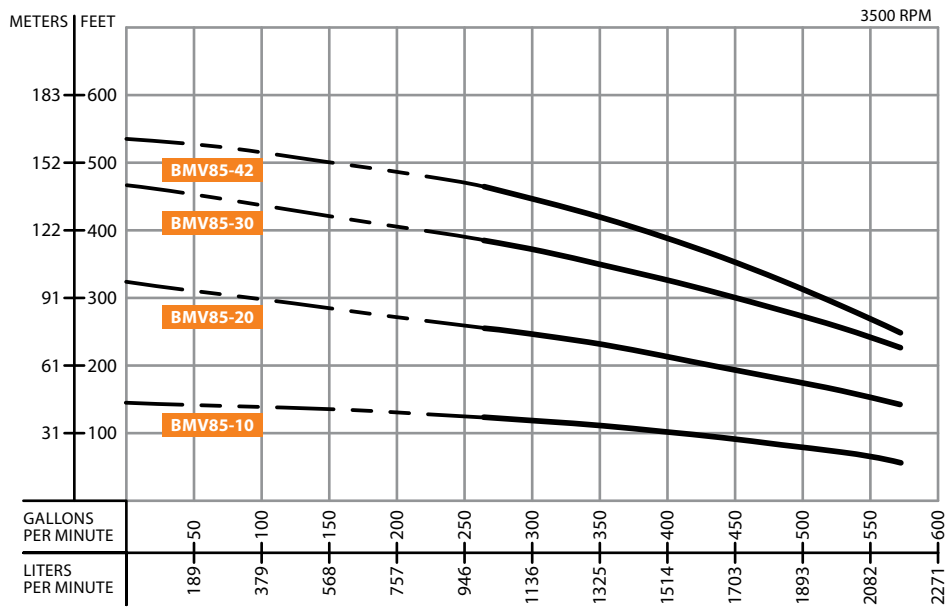
Performance Table

MODEL	STAGES	HP	Q (GPM)	H (ft)								
				176.1	220.1	264.2	286.2	308.2	352.2	396.3	440.3	
BMV65-11-1003	1	10	85.3	82.0	75.5	72.2	68.9	59.1	45.9	32.8		
BMV65-10-1503	1	15	121.4	114.8	108.3	105.0	101.7	91.9	78.7	68.9		
BMV65-20-3003	2	30	242.8	236.2	219.8	210.0	203.4	187.0	167.3	137.8		
BMV65-30-4003	3	40	367.5	354.3	328.1	315.0	305.1	282.2	252.6	213.3		
BMV65-42-5003	4	50	426.5	406.8	377.3	360.9	337.9	308.4	272.3	216.5		
BMV65-52-6003	5	60	564.3	531.5	495.4	472.4	449.5	413.4	367.5	298.6		

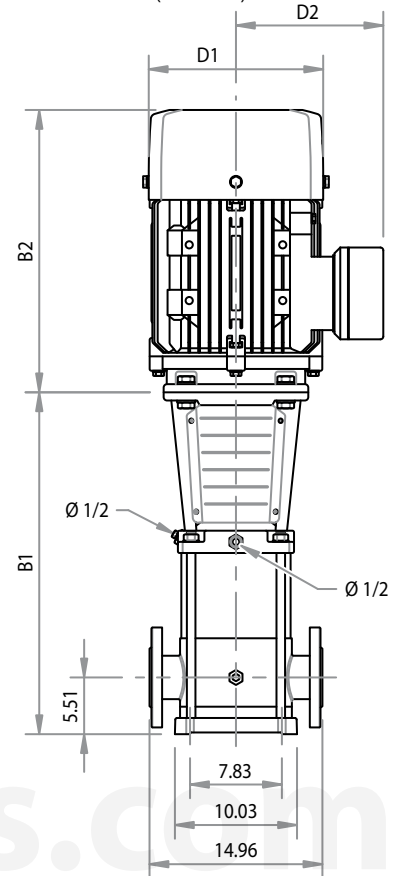
Size and Weight

Size (inches)					Weight (lb)
B1	B2	B1+B2	D1	D2	
22.1	16.9	39.0	10.2	8.2	240.3
26.4	19.3	45.7	13.0	10.0	390.2
29.7	23.2	52.9	14.2	11.2	546.7
32.9	26.0	58.9	15.7	12.2	690.0
36.2	26.0	62.2	15.7	12.2	740.8
39.4	27.6	67.0	18.1	13.4	886.3

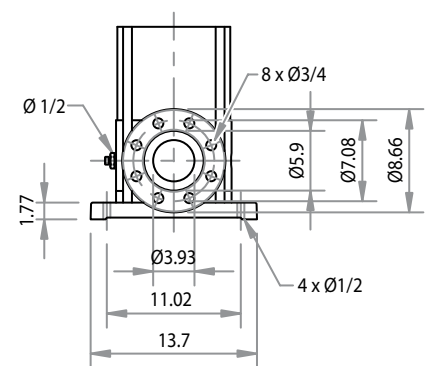
CURVE BMV85



Installation Diagram (inches)



PN16/DN100



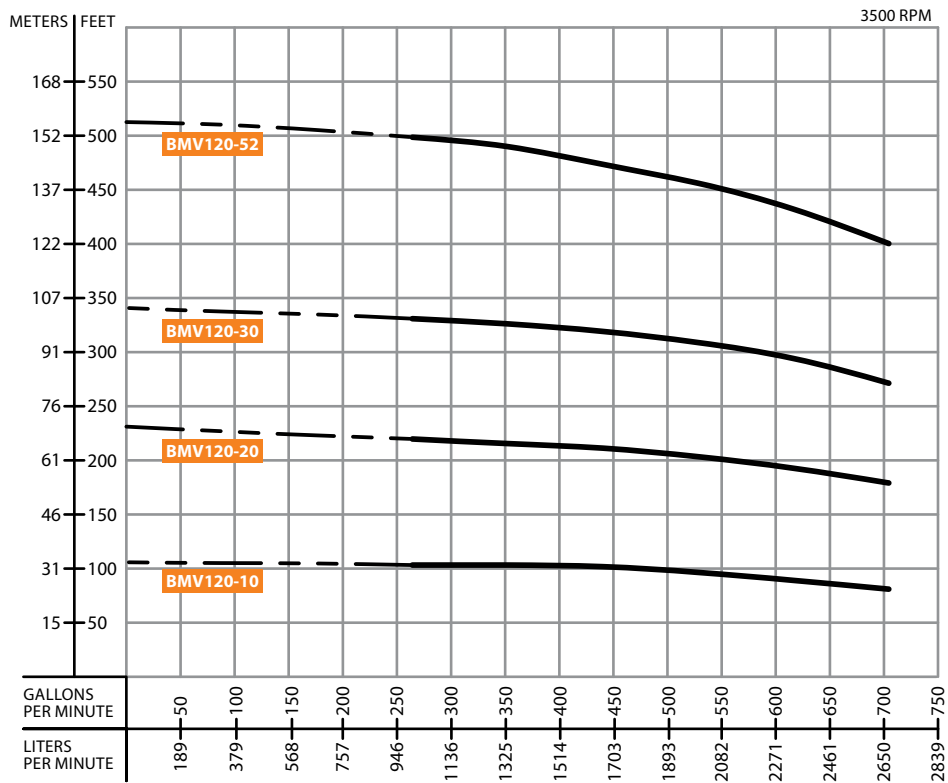
Size and Weight

Size (inches)					Weight
B1	B2	B1+B2	D1	D2	(lb)
22.5	19.3	41.8	13.0	10.0	414.5
30.4	26.0	56.4	15.7	12.2	670.2
34.1	27.6	61.6	18.1	13.4	864.2
37.7	27.6	65.2	18.1	13.4	873.0

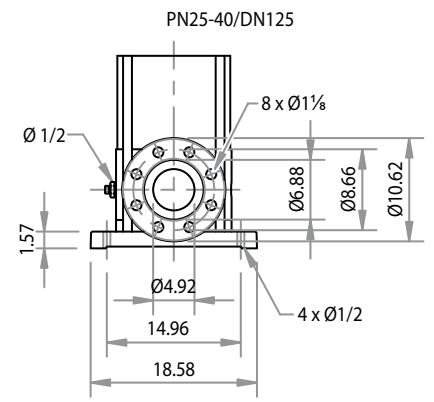
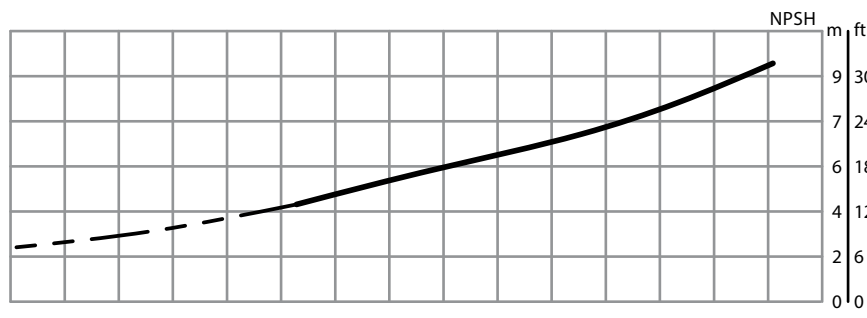
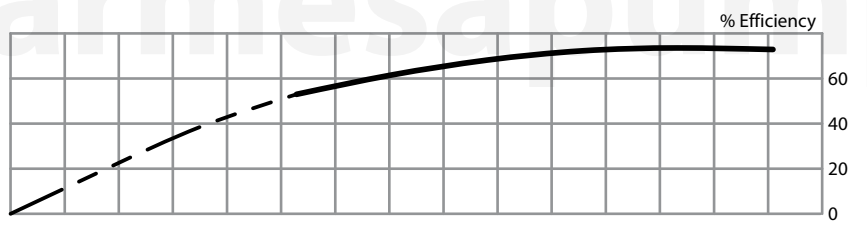
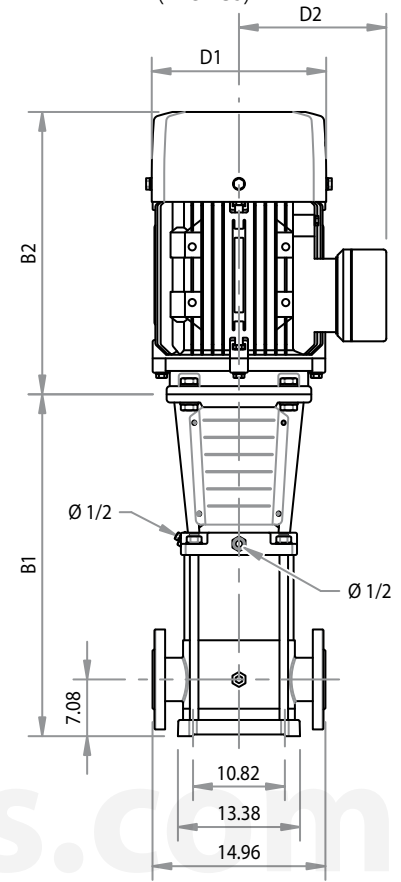
Performance Table

MODEL	STAGES	HP	Q (GPM)	H (ft)							
				264.2	308.2	352.2	374.2	396.3	440.3	484.3	528.3
BMV85-10-2003	1	20	118.1	114.8	108.3	101.7	98.4	95.1	85.3	75.5	59.1
BMV85-20-4003	2	40	249.3	239.5	226.4	216.5	210.0	196.9	183.7	170.6	144.4
BMV85-30-6003	3	60	380.6	364.2	344.5	334.6	318.2	305.1	288.7	259.2	226.4
BMV85-42-6003	4	60	462.6	442.9	419.9	406.8	387.1	357.6	334.6	292.0	236.2

CURVE BMV120



Installation Diagram (inches)



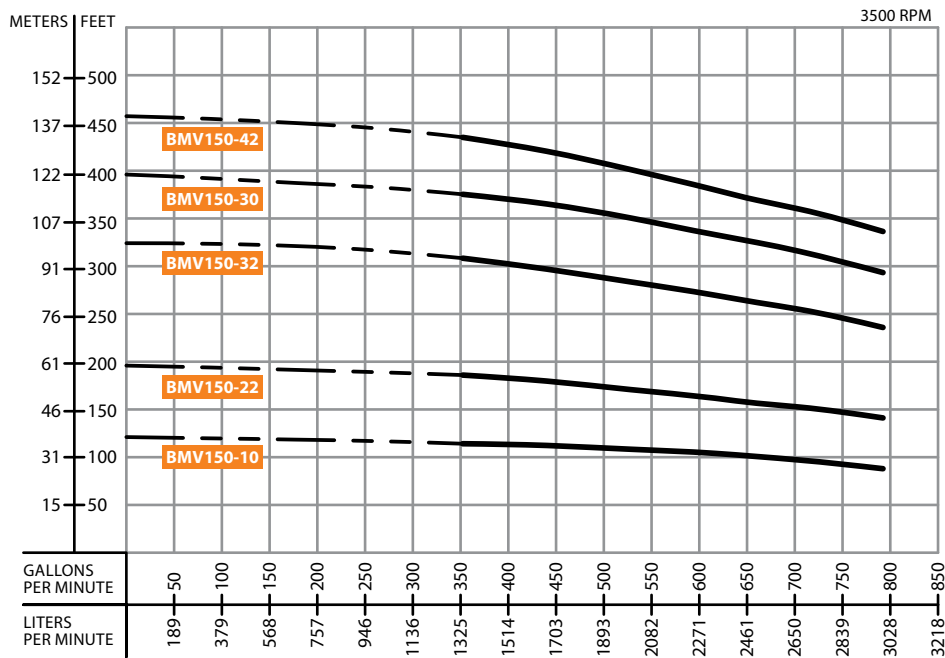
Size and Weight

Size (inches)					Weight (lb)
B1	B2	B1+B2	D1	D2	
33.1	21.7	54.7	13.0	10.0	551.2
39.4	26.0	65.4	15.7	12.2	837.8
46.9	30.3	77.2	20.1	14.6	1201.5
59.4	33.3	92.7	22.8	16.1	1521.2

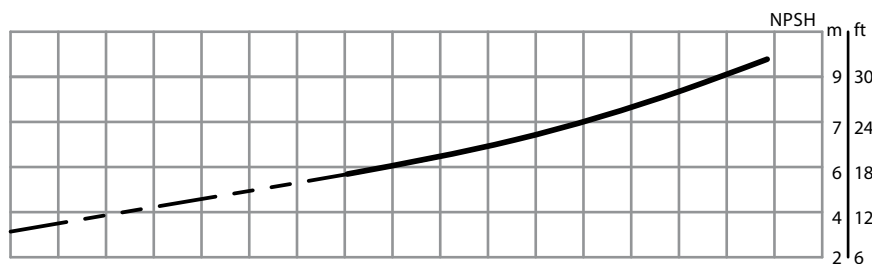
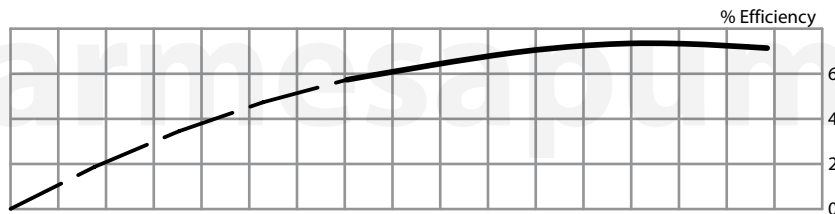
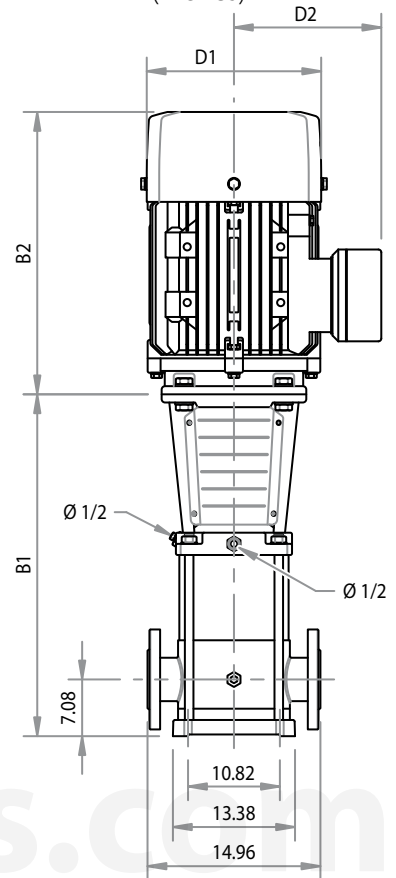
Performance Table

MODEL	STAGES	HP	Q (GPM)	H (ft)											
				264.2	308.2	352.2	396.3	440.3	484.3	528.3	572.4	616.4	660.4	704.5	
BMV120-10-2503	1	25	H (ft)	101.0	100.7	100.7	100.1	99.4	96.8	94.5	90.6	86.6	83.3	80.1	
BMV120-20-5003	2	50		217.5	216.5	215.6	213.3	211.3	206.7	203.4	199.1	195.5	187.0	179.1	
BMV120-30-7503	3	75		329.1	328.1	326.1	322.5	319.2	313.3	308.4	301.8	295.3	283.1	271.3	
BMV120-52-10003	5	100		498.7	495.4	491.1	482.3	472.4	464.2	456.0	444.6	433.1	416.7	400.3	

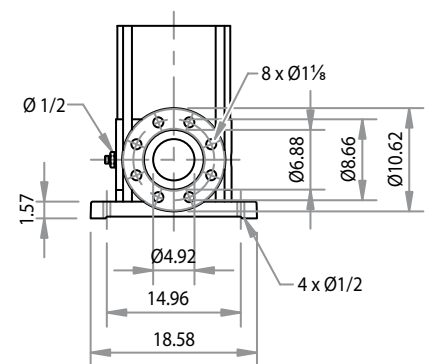
CURVE BMV150



Installation Diagram (inches)



PN25-40/DN125



Size and Weight

Size (inches)					Weight (lb)
B1	B2	B1+B2	D1	D2	
33.1	23.2	56.3	14.2	11.2	617.3
39.4	26.0	65.4	15.7	12.2	793.7
46.9	30.3	77.2	20.1	14.6	1201.5
46.9	33.3	80.1	22.8	16.1	1466.1
53.1	33.3	86.4	22.8	16.1	1499.1

Performance Table

MODEL	STAGES	HP	Q (GPM)	352.2	396.3	440.3	484.3	528.3	572.4	616.4	660.4	704.5	748.5	792.5
BMV150-10-3003	1	30	H (ft)	114.8	113.2	111.5	110.2	108.3	106.0	104.0	100.7	97.1	91.9	88.6
BMV150-22-4003	2	40		187.0	182.1	173.9	170.6	168.3	164.0	160.8	157.5	154.2	147.6	141.1
BMV150-32-7503	3	75		308.4	301.8	296.9	290.0	283.5	274.9	265.7	262.5	255.9	247.0	237.9
BMV150-30-10003	3	100		375.3	370.7	365.2	357.6	349.4	341.2	333.0	324.8	315.0	305.1	293.3
BMV150-42-10003	4	100		436.4	427.5	418.6	408.8	399.3	388.1	377.3	369.1	360.9	348.8	336.3

www.barmesapumps.com

© Barmesa Pumps LLC. All rights reserved.