

SELF-PRIMING CENTRIFUGAL SOLIDS HANDLING PUMP

Series: SH8-U
Suction: 8"
Discharge: 8"
Spherical solids handling: 3"



SIZE
8" x 8", 125 lb

LIQUID TEMPERATURE
160°F (71 °C)

CASING
Cast iron ASTM A-48 class 30. Maximum operating pressure 86 psi (593 KPa).

IMPELLER
Design: 2 vane, open.
Material: ductile iron no. 65-45-12

SHAFT
Alloy steel no. 4140

SHAFT SLEEVE
316 series stainless steel

WEAR PLATE
Carbon steel no. 1015. Replaceable.

COVER PLATE
Cast iron ASTM A-48 class 30, weight 37 lbs.
Removable/adjustable.

FLAP VALVE
Neoprene with steel reinforcing

BEARING HOUSING
Cast iron ASTM A-48 class 30

SEAL PLATE
Cast iron ASTM A-48 class 30

BEARING - PUMP END
Open single ball, radial load.

BEARING - DRIVE END
Open double ball, thrust load.

SEAL CAVITY AND BEARING LUBRICATION
SAE no. 30 non detergent oil, pump includes oil level sight gauges.

GASKETS
Buna-N, compressed synthetic fibers, PTFE, vegetable fiber, cork and rubber.

O-RINGS
Buna-N

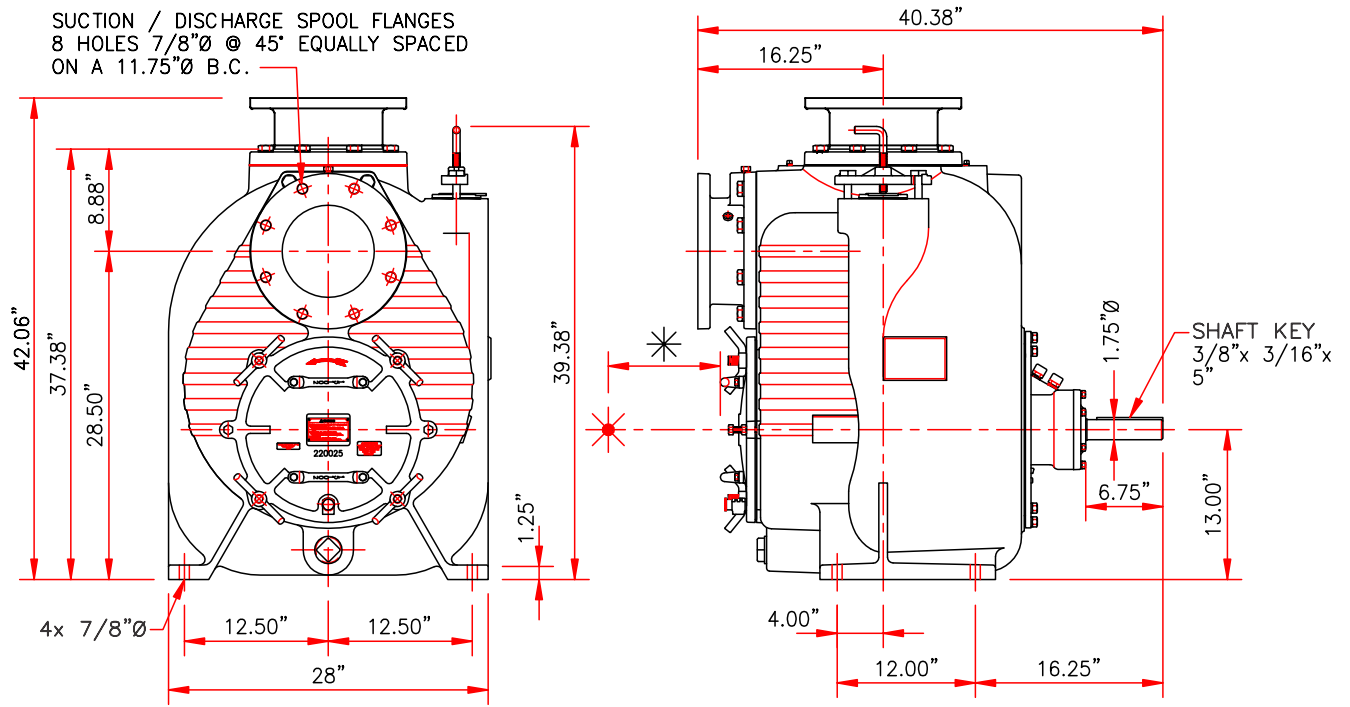
HARDWARE
Standard plated steel

PAINT
Air dry enamel, water based.

PRESSURE RELIEF VALVE
Brass

SEAL
Design: type 21, mechanical, oil lubricated, double floating, self aligning.
Material: silicon carbide rotating and stationary faces, fluorocarbon elastomers (Viton® or equivalent). 316 stainless steel cage and spring.

OPTIONAL EQUIPMENT
Flexible coupled assy, with base OSHA guard and electric motor.



* 24" CLEARANCE RECOMMENDED FOR MAINTENANCE. 13" MINIMUM.

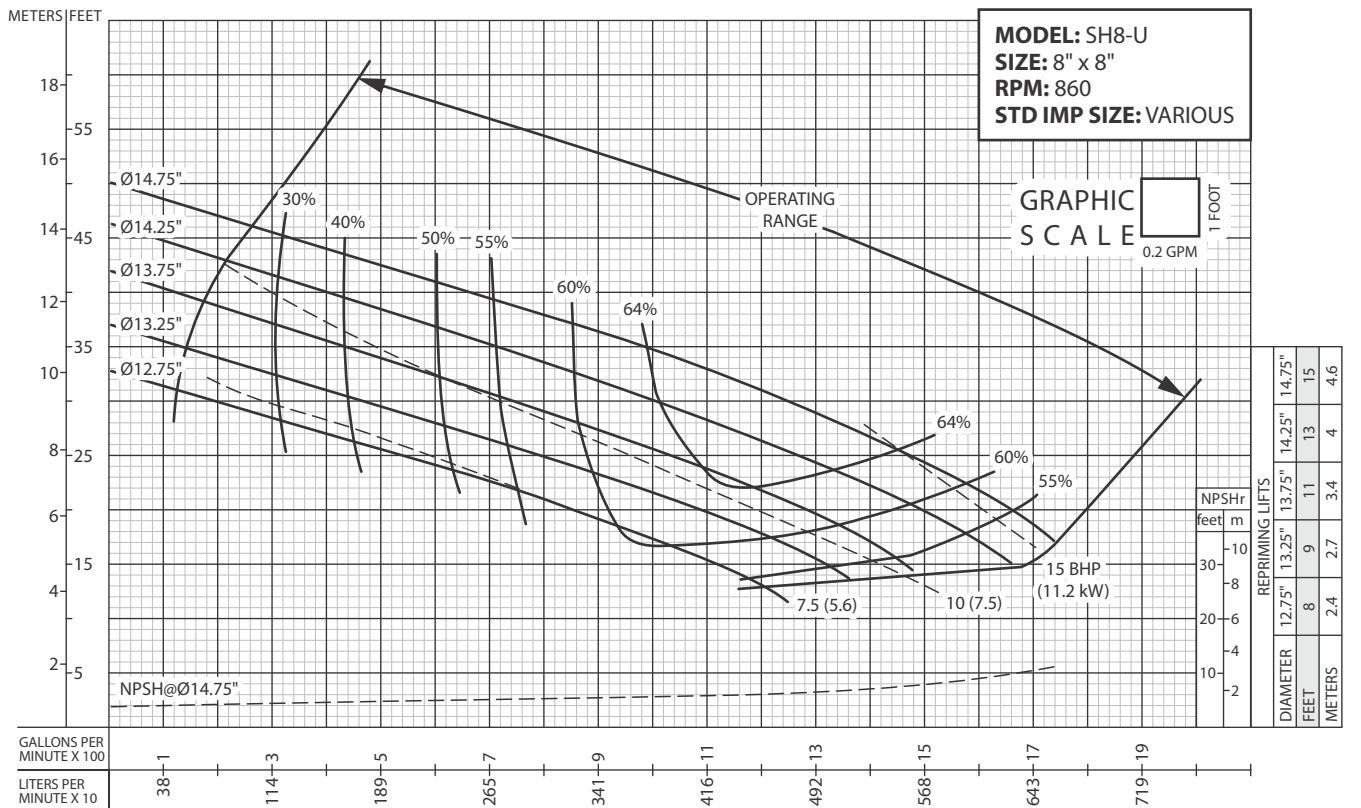
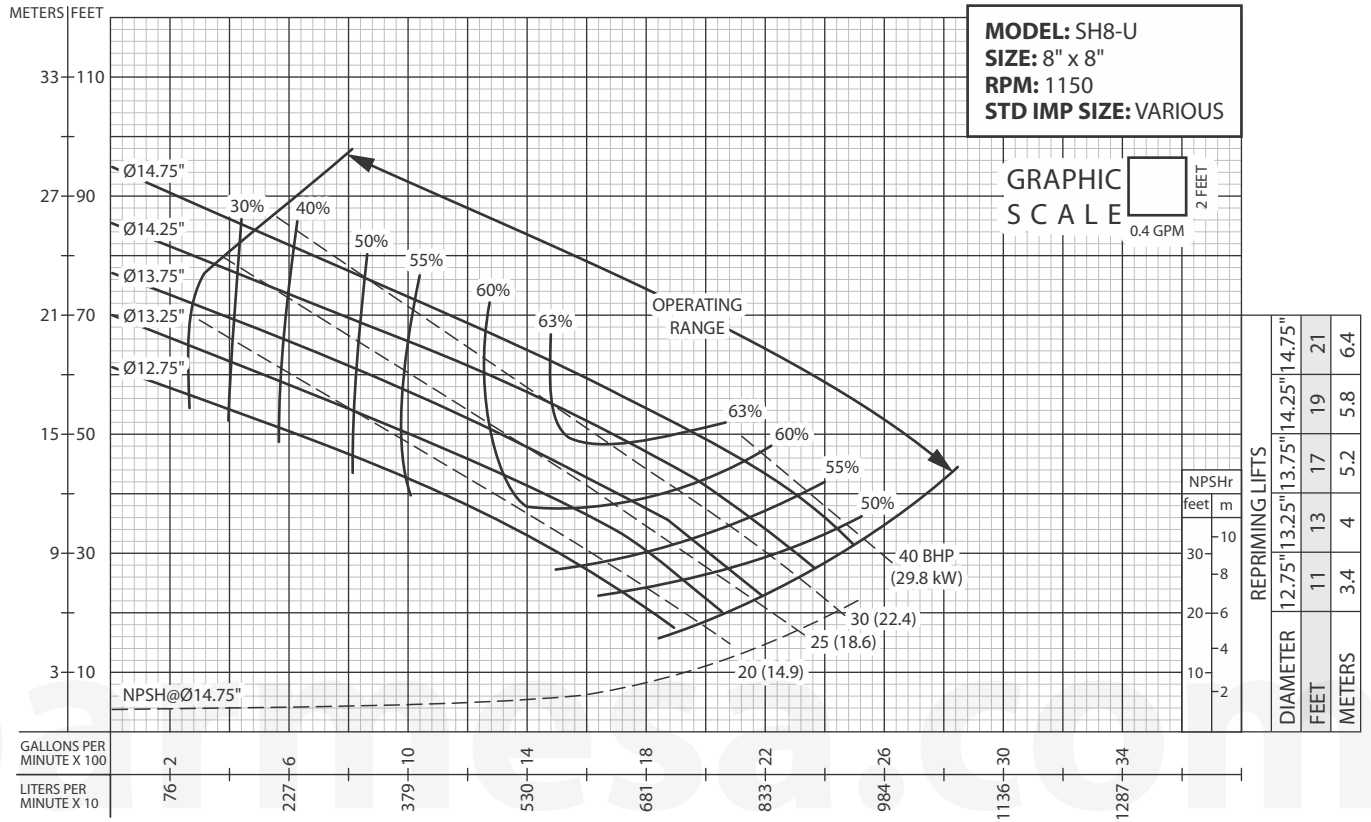


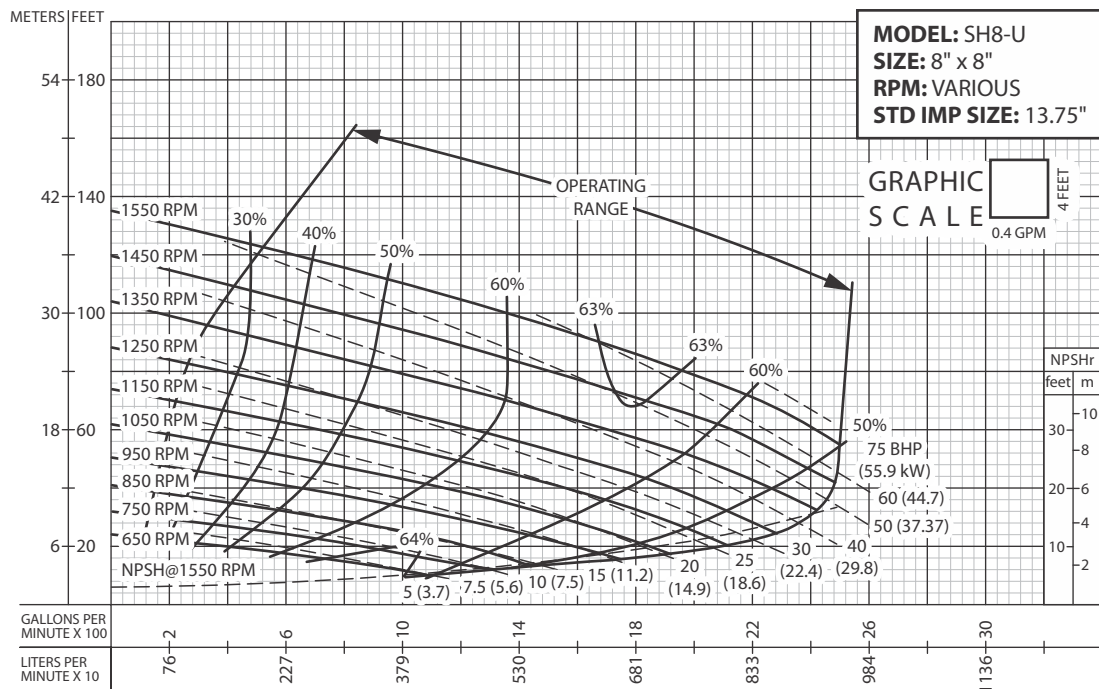
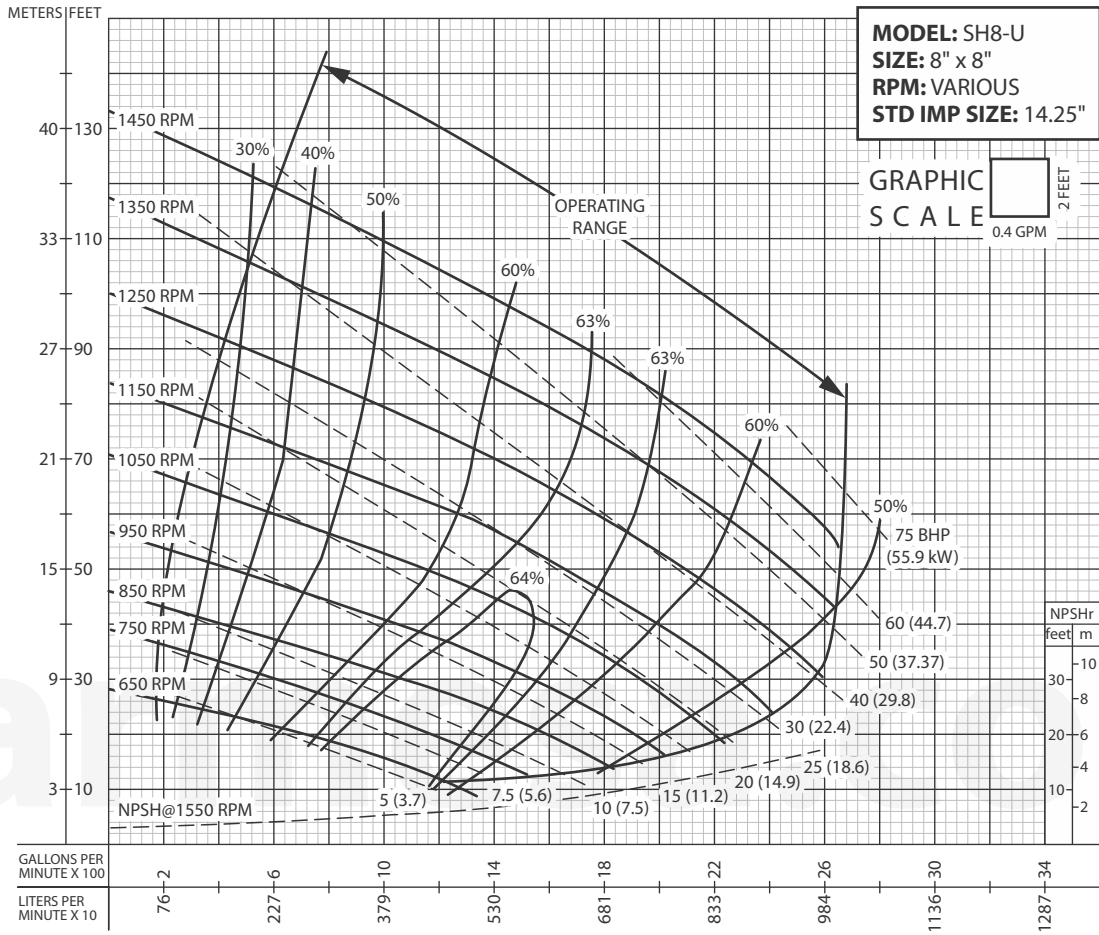
IMPORTANT! - Do not use in explosive atmosphere or for pumping volatile flammable liquids.

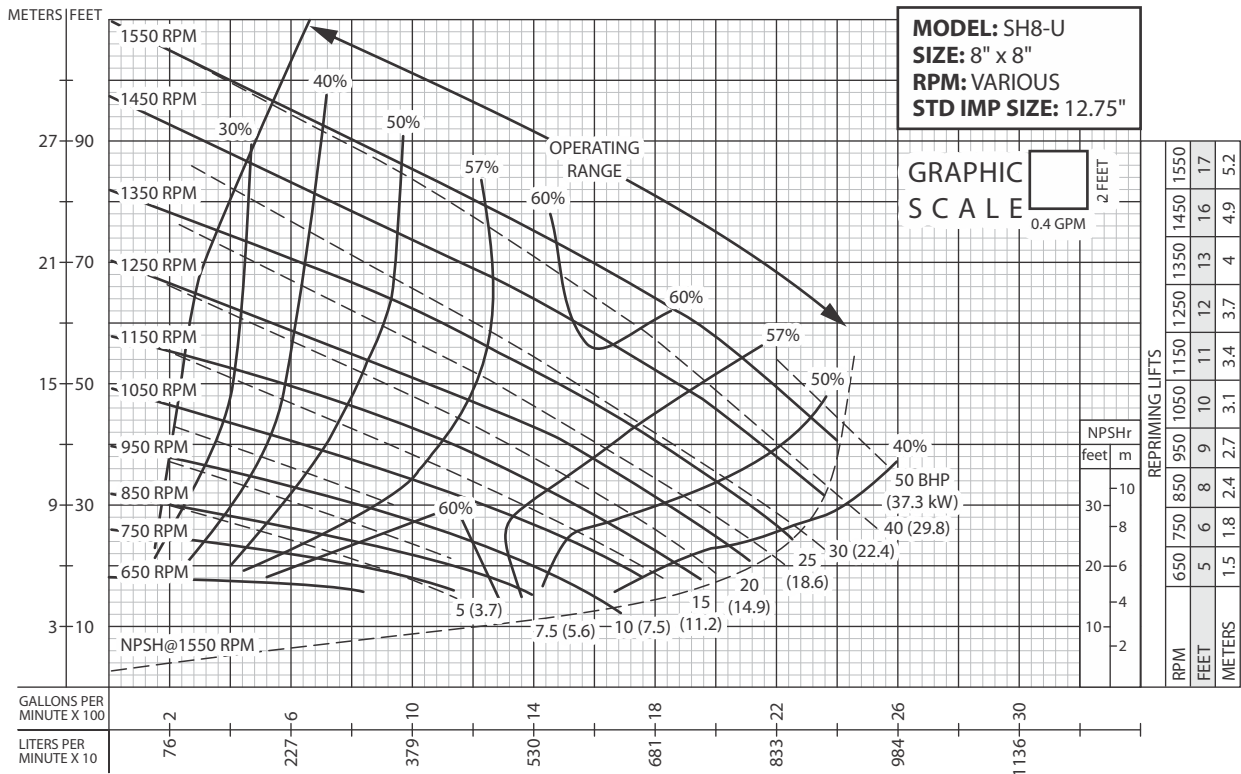
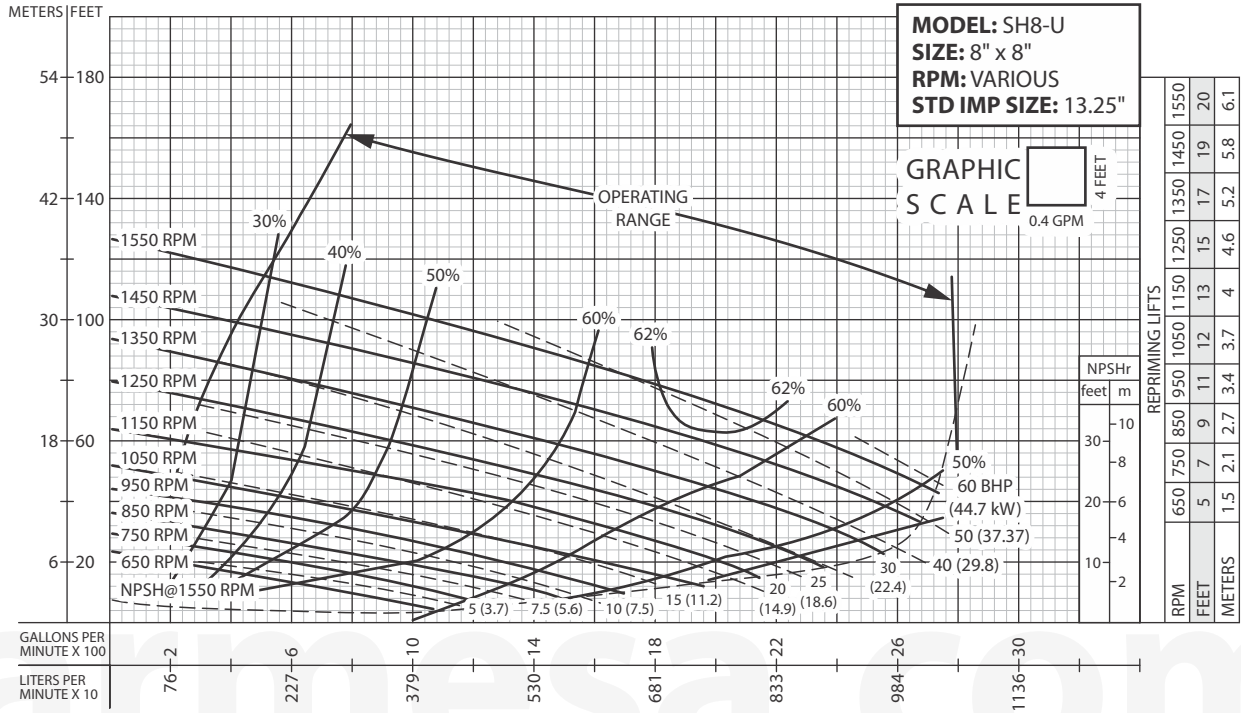
barmesa.com

IMPORTANT!

1. Never use this pump to handle explosive liquids.
2. This pump is not approved to be used in swimming pools, recreational installations or any application where human contact may be common.
3. Pump may be operated "dry" for extended periods without damage to motor and/or seals.









PERFORMANCE CURVE

Self-Priming Centrifugal Trash Pump

Series: SH8-U

