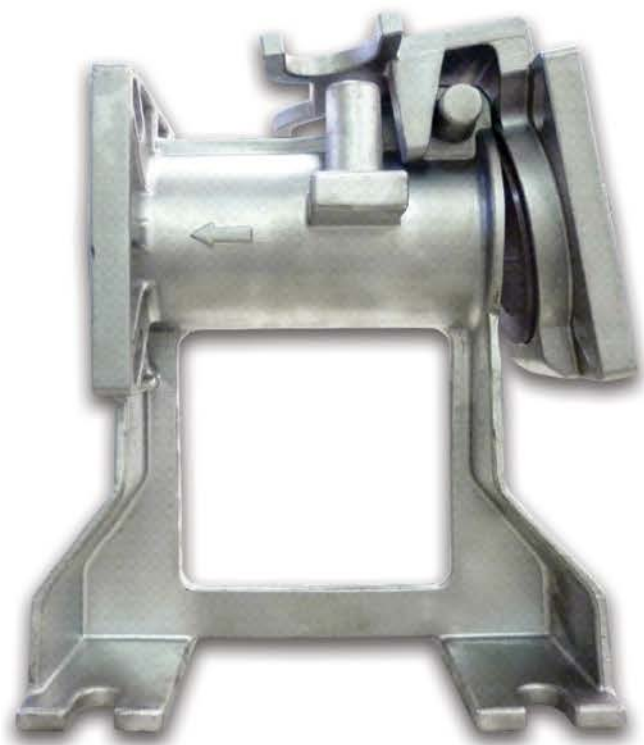


SLIDE RAIL COUPLING SQM

To be used with
BSV series pumps.



LOCATION

This SQM is designed for wet wells, tanks, or lift stations where it is necessary to remove a pump from service and reinstall the pump without maintenance personnel entering the pit to unbolt the pump flanges.

FEATURES

- ▶ 2" NPT vertical discharge.
- ▶ 1" stainless steel guide rails (provided by installer).
- ▶ Stress-free rail system.
- ▶ Durable stainless steel base and lift-out flange.
- ▶ Stainless steel pump adapter and guide plate.

MOVABLE FITTING

Stainless steel 316.

GUIDERAIL CAP

Bracket: 304 stainless steel.

HARDWARE

304 series stainless steel.

GASKETS

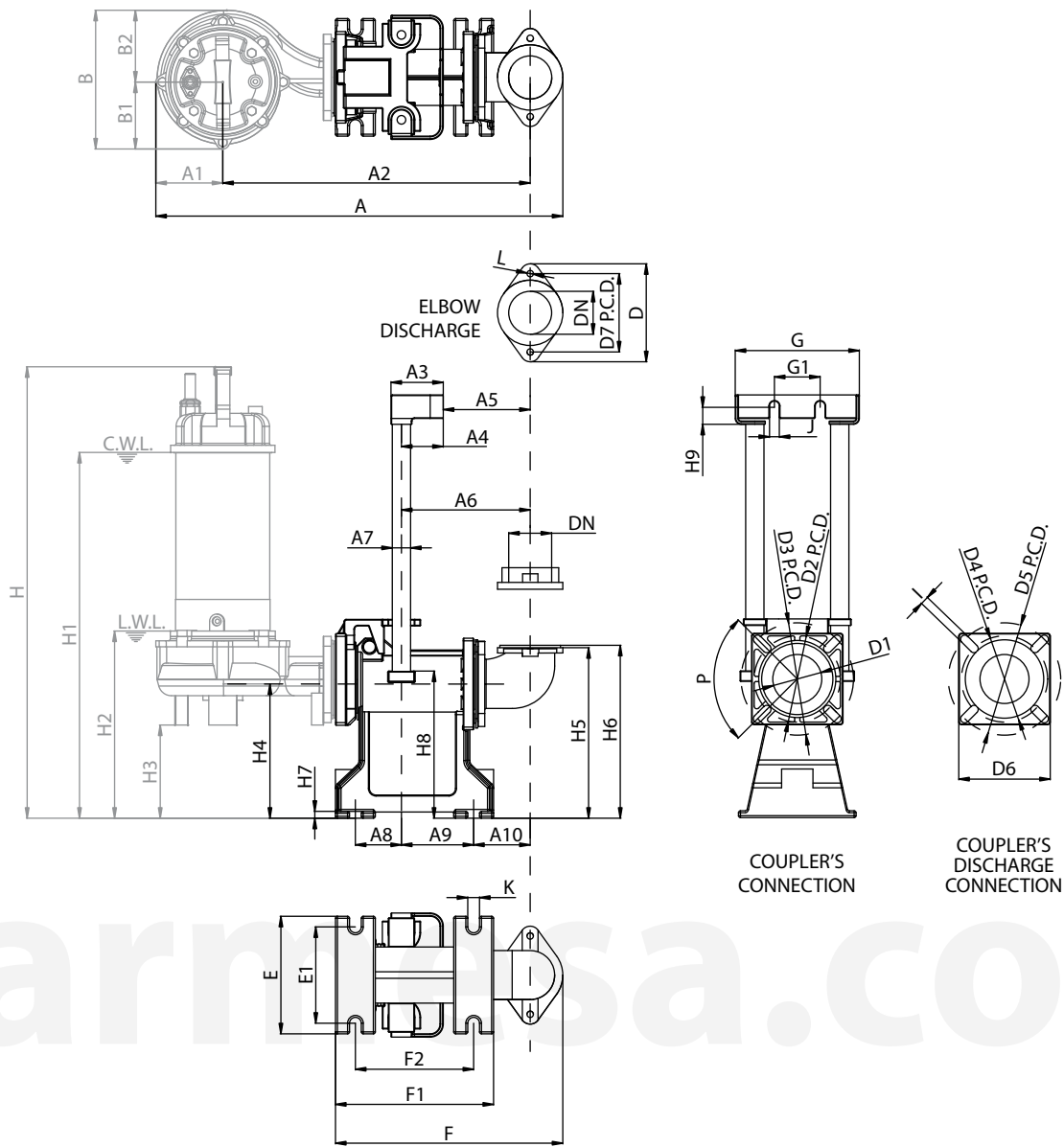
Viton[®].

Upper bracket



Screw pack





A	A1	A2	A3	A4	A5	A6	A7	A8	A9	A10	B
24	4.09	17.9	3.07	2.44	5.28	7.72	1	2.83	4.29	3.43	8.19

B1	B2	D	D1	D2	D3	D4	D5	D6	D7	DN*
4.09	4.09	5.91	2.91	5.31	6.77	5.31	6.77	5.51	4.72	-

P	E	E1	F	F1	F2	G	G1	H	H1	H2	H3
90°	7.09	5.91	13.8	9.45	7.13	7.48	2.76	26	21	9.96	5.28

H4	H5	H6	H7	H8	H9	I	J	K	L	WT1
8.07	9.69	9.8	0.39	8.66	1.02	0.55	0.59	0.71	0.39	30.6

Dimensions in inches.
 *DN = 2" for 2BSV pumps and 3" for 3BSV pumps.
 C.W.L. = Continuous running water level.
 L.W.L. = Lowest running water level.