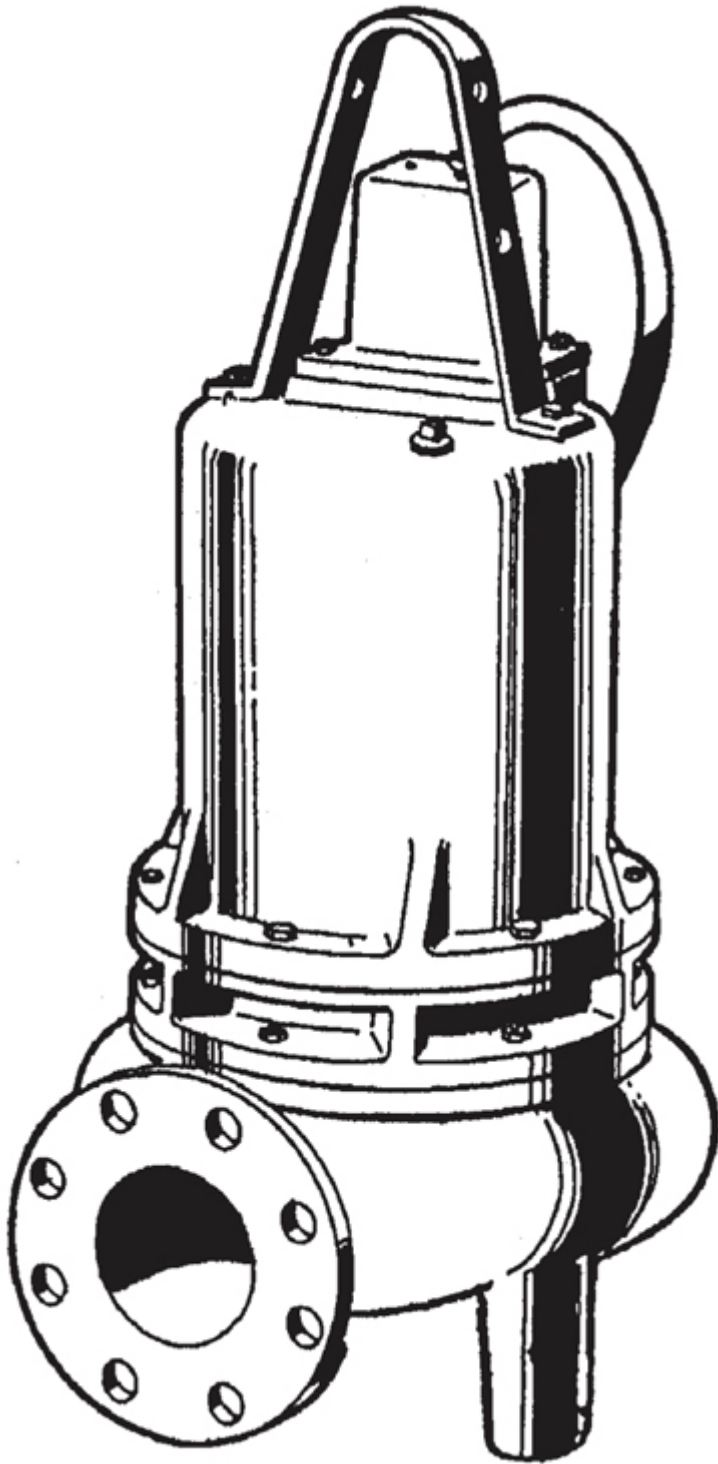


4SEV-DS – 7.5 HP

3" Spherical Solids Handling - Vortex

BARNES®



Specifications

DISCHARGE: 4" 125lb., Horizontal flange

SPEED: 1150 OR 1750 RPM

IMPELLER:

- **Design:** Vortex, 8 vane with pump out vanes on back side, Dynamically balanced, ISO G6.3
- **Material:** Cast iron ASTM A-48, class 30

CORD ENTRY: 40 ft. (12.1 m) Cord. Epoxy sealed housing with secondary pressure grommet for sealing and strain relief

MOTOR:

- **Design:** NEMA L- single phase, NEMA B - three phase torque curve, oil filled, squirrel cage induction
- **Winding:** Class F, class H rated magnet wire
- **Service Factor:** 1.15

SEAL:

- **Design:** Double mechanical, oil filled pressure equalized reservoir
- **Material:** Carbon/Ceramic/Buna-N

DIAPHRAGM: Buna-N

LIQUID TEMPERATURE: 104°F (40°C) Continuous

VOLUTE: Cast iron ASTM A-48, class 30

MOTOR HOUSING Cast iron ASTM A-48, class 30

SEAL PLATE: Cast iron ASTM A-48, class 30

SHAFT: 416 Stainless steel

SQUARE RINGS: Buna-N

HARDWARE: 300 Series stainless steel

PAINT: Air dry enamel (epoxy optional)

BEARINGS:

Upper Bearing:

- Design: Single row, ball, oil lubricated
- Load: Radial

Lower Bearing:

- Design: Single row, ball, oil lubricated
- Load: Radial

SINGLE PHASE: Capacitor start/capacitor run. Requires Barnes starter/panel which includes capacitors and overload protection

THREE PHASE: Dual voltage motor 230/460/575. Requires overload protection to be included in control panel, VFD suitable (1750 RPM)

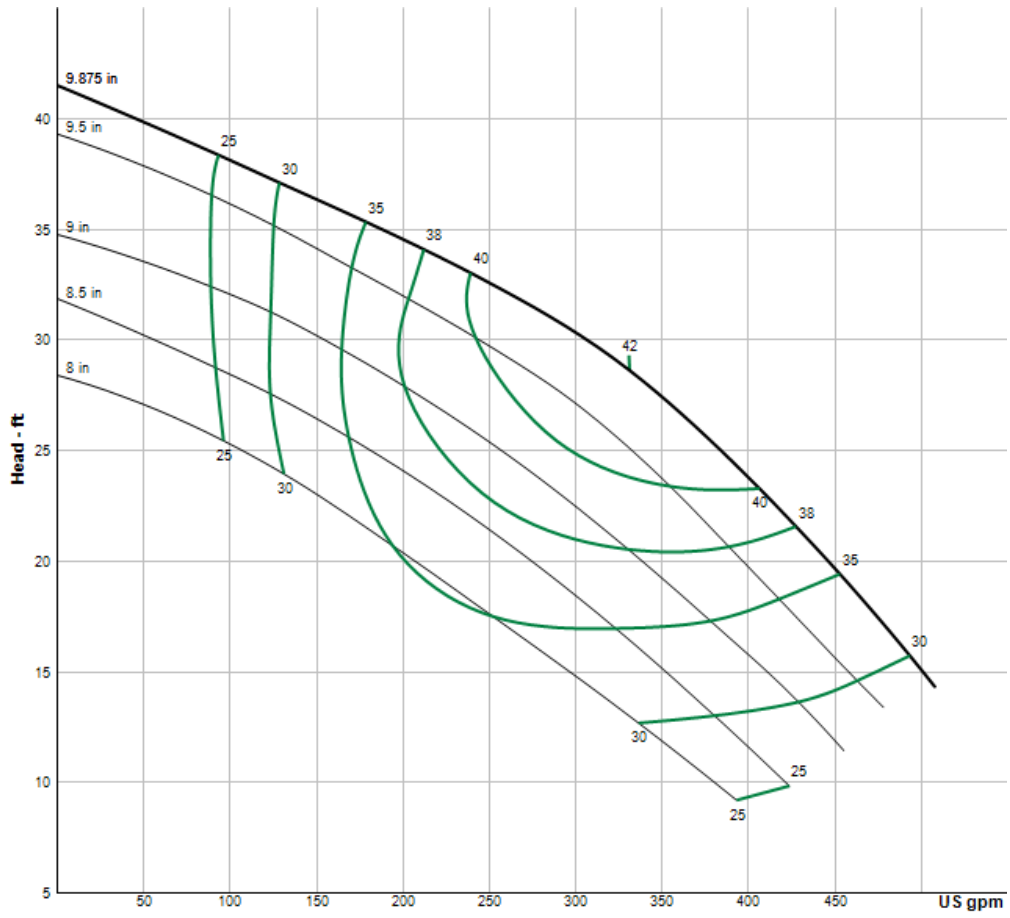
THREE PHASE: Tri Voltage motor 200-230/460. Requires overload protection to be included in control panel, VFD suitable (1150 RPM)

MOISTURE SENSOR: Normally open (N/O), requires relay in control panel

TEMPERATURE SENSOR: Normally Closed (N/C), Requires relay in control panel. For three phase units ONLY

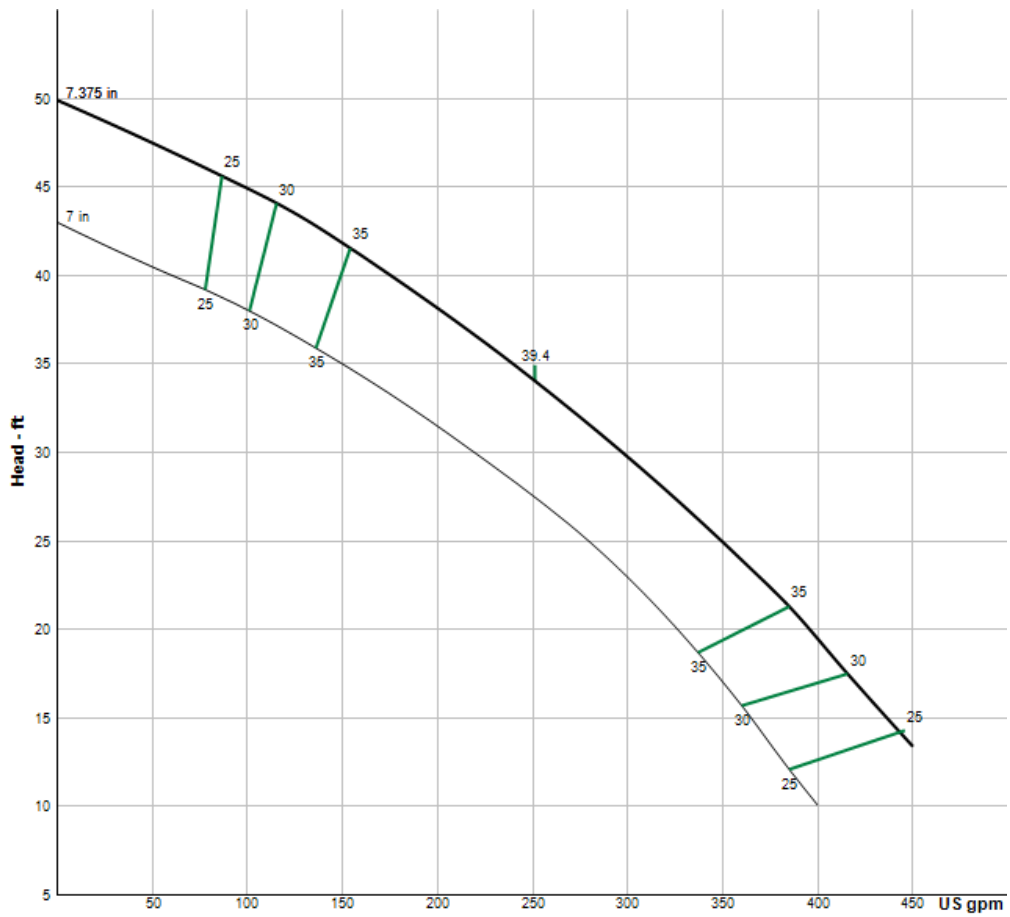
Curves

1150 RPM



Pump HP	Impeller Dia mm (in.)
4.5	216 (8.50)
7.5	251 (9.88)

1750 RPM



Pump HP	Impeller Dia mm (in.)
4.5	178 (7.00)
7.5	187 (7.38)
11.3	213 (8.38)
15.0	251 (9.88)

Model Information

MODEL NO.	4SEV7596DS	4SEV7546DS	4SEV7556DS	4SEV7524DS	4SEV7564DS	4SEV7534DS	4SEV
PART NO.	142112	142113	142114	140231	140232	140233	14
HP	7.5	7.5	7.5	7.5	7.5	7.5	7
VOLT/PH	200-230/3	460/3	575/3	230/1	200/3	230/3	46
Hz	60	60	60	60	60	60	60
RPM (nom)	1150	1150	1150	1750	1750	1750	1
NEMA START CODE	B/E	E	E	A	B	D	
FULL LOAD AMPS	25.3/22.0	11	8.8	39	30.8	26.8	1
LOCKED ROTOR AMPS	74.8/86.0	43	34.4	96	69.5	80	
CORD SIZE	8/4	8/4	10/4	6/4	8/4	8/4	8
CORD TYPE	SOW	SOW	SOW	SOW	SOW	SOW	S
CORD O.D INCH (mm)	0.830 (21)	0.830 (21)	0.750 (19.1)	1.06 (27)	0.830 (21)	0.830 (21)	0.83

Drawing

