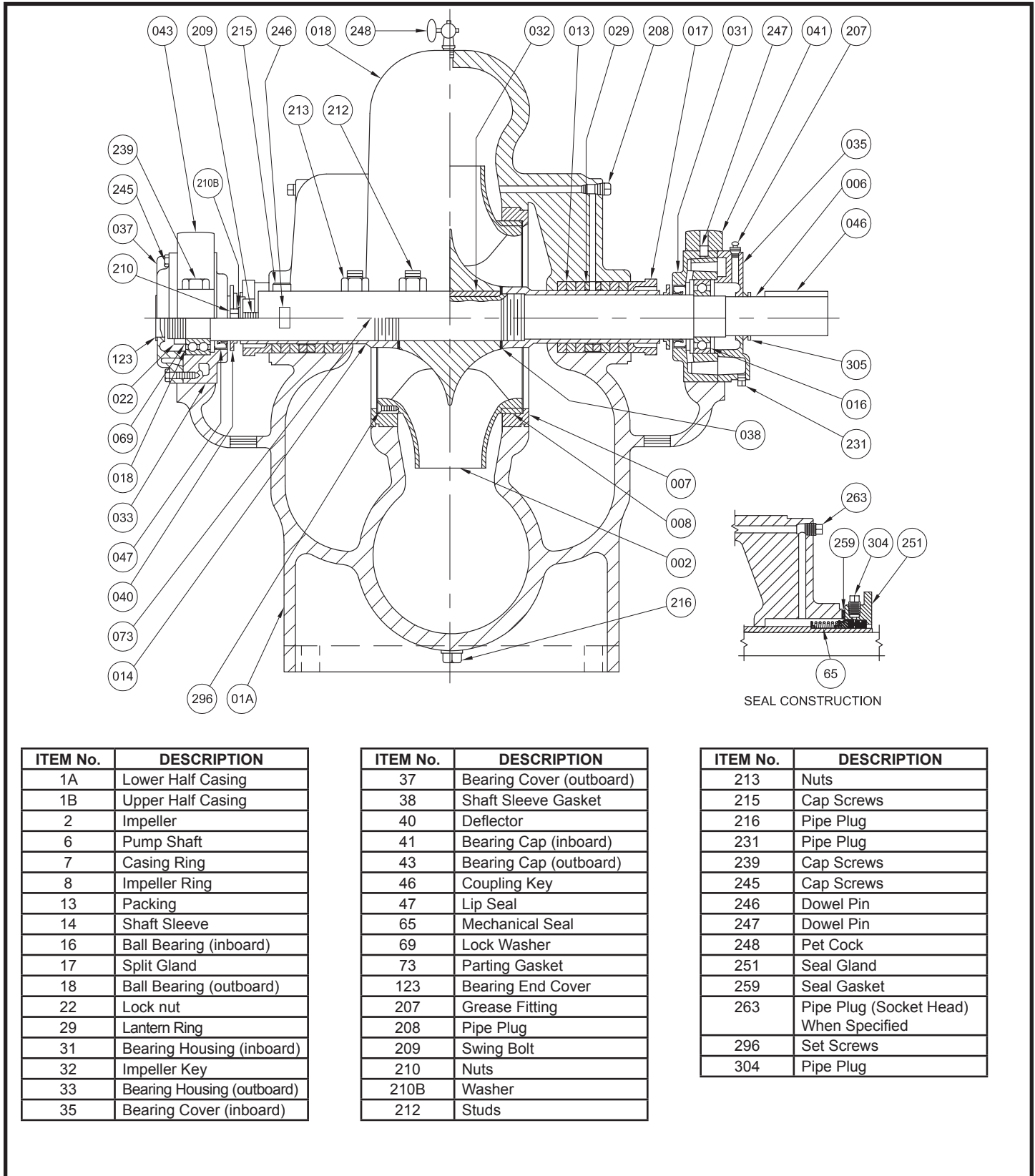


Horizontal Split Case Centrifugal Pumps



ITEM No.	DESCRIPTION
1A	Lower Half Casing
1B	Upper Half Casing
2	Impeller
6	Pump Shaft
7	Casing Ring
8	Impeller Ring
13	Packing
14	Shaft Sleeve
16	Ball Bearing (inboard)
17	Split Gland
18	Ball Bearing (outboard)
22	Lock nut
29	Lantern Ring
31	Bearing Housing (inboard)
32	Impeller Key
33	Bearing Housing (outboard)
35	Bearing Cover (inboard)

ITEM No.	DESCRIPTION
37	Bearing Cover (outboard)
38	Shaft Sleeve Gasket
40	Deflector
41	Bearing Cap (inboard)
43	Bearing Cap (outboard)
46	Coupling Key
47	Lip Seal
65	Mechanical Seal
69	Lock Washer
73	Parting Gasket
123	Bearing End Cover
207	Grease Fitting
208	Pipe Plug
209	Swing Bolt
210	Nuts
210B	Washer
212	Studs

ITEM No.	DESCRIPTION
213	Nuts
215	Cap Screws
216	Pipe Plug
231	Pipe Plug
239	Cap Screws
245	Cap Screws
246	Dowel Pin
247	Dowel Pin
248	Pet Cock
251	Seal Gland
259	Seal Gasket
263	Pipe Plug (Socket Head) When Specified
296	Set Screws
304	Pipe Plug

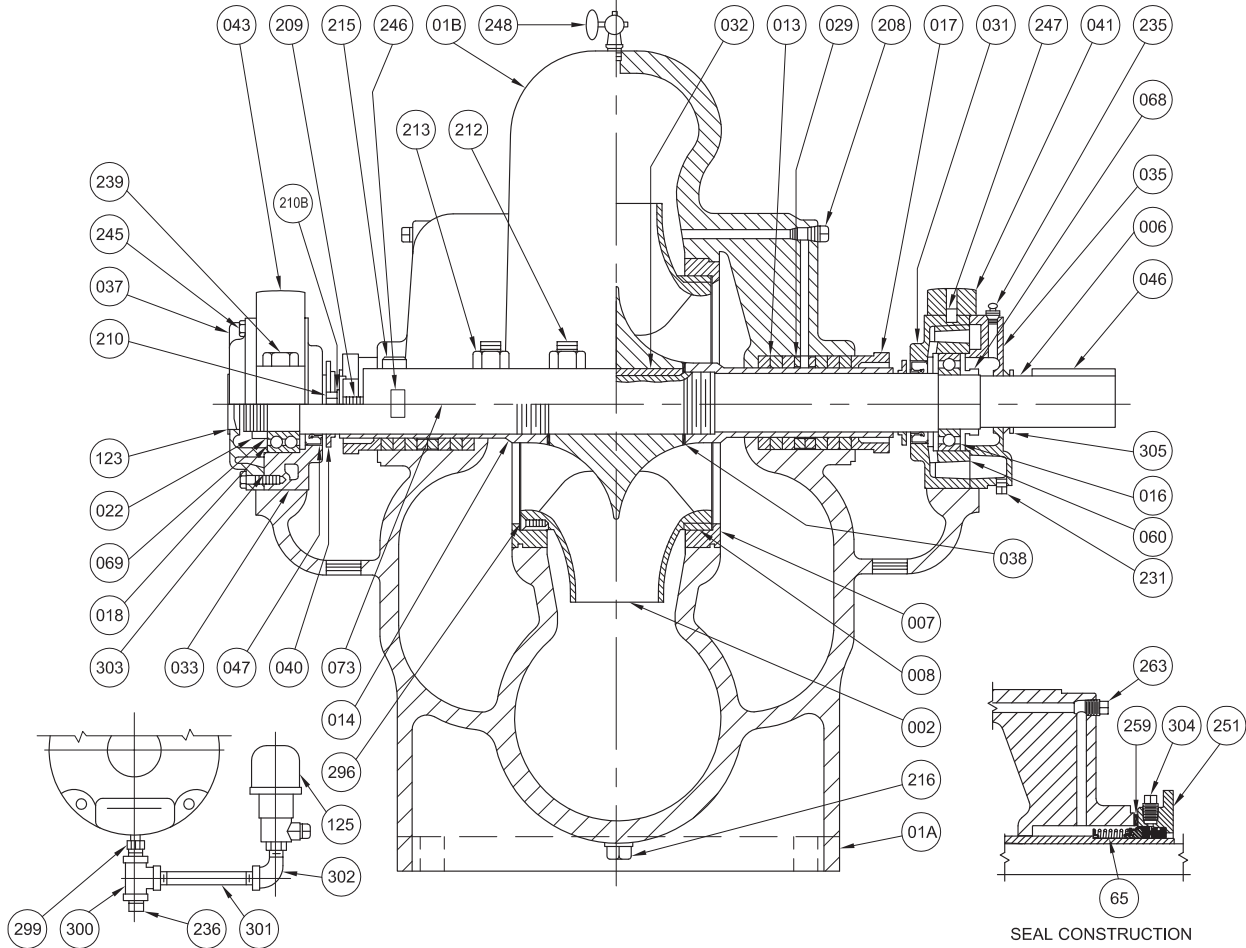
Pump Assembly - Fig. 5060

Packed Stuffing Box, Oil Lubricated Bearings
Bulletin 5060A

DEMING®

www.cranepumps.com

Horizontal Split Case Centrifugal Pumps



ITEM No.	DESCRIPTION
1A	Lower Half Casing
1B	Upper Half Casing
2	Impeller
6	Pump Shaft
7	Casing Ring
8	Impeller Ring
13	Packing
14	Shaft Sleeve
16	Ball Bearing (inboard)
17	Split Gland
18	Ball Bearing (outboard)
22	Lock nut
29	Lantern Ring
31	Bearing Housing (inboard)
32	Impeller Key
33	Bearing Housing (outboard)
35	Bearing Cover (inboard)
37	Bearing Cover (outboard)
38	Shaft Sleeve Gasket
40	Deflector

ITEM No.	DESCRIPTION
41	Bearing Cap (inboard)
43	Bearing Cap (outboard)
46	Coupling Key
47	Lip Seal
60	Oil Ring
65	Mechanical Seal
68	Shaft Collar
69	Lockwasher
73	Parting Gasket
123	Bearing End Cover
125	Oiler
208	Pipe Plug
209	Swing Bolt
210	Nuts
210B	Washer
212	Studs
213	Nuts
215	Cap Screws
231	Pipe Plug
235	Vent

ITEM No.	DESCRIPTION
236	Pipe Plug
239	Cap Screws
245	Cap Screws
246	Dowel Pin
247	Dowel Pin
248	Pet Cock
251	Seal Gland
259	Seal Gasket
263	Pipe Plug When Specified
296	Set Screws
299	Nipple Reducing
300	Tee
301	Nipple
302	Street Elbow
303	Bearing Cover Gasket
304	Pipe Plug
305	Forsheda Ring

SECTION 29
PAGE 4
DATE 11/15

CRANE
A Crane Co. Company

PUMPS & SYSTEMS

USA: (937) 778-8947 • Canada: (905) 457-6223 • International: (937) 615-3598