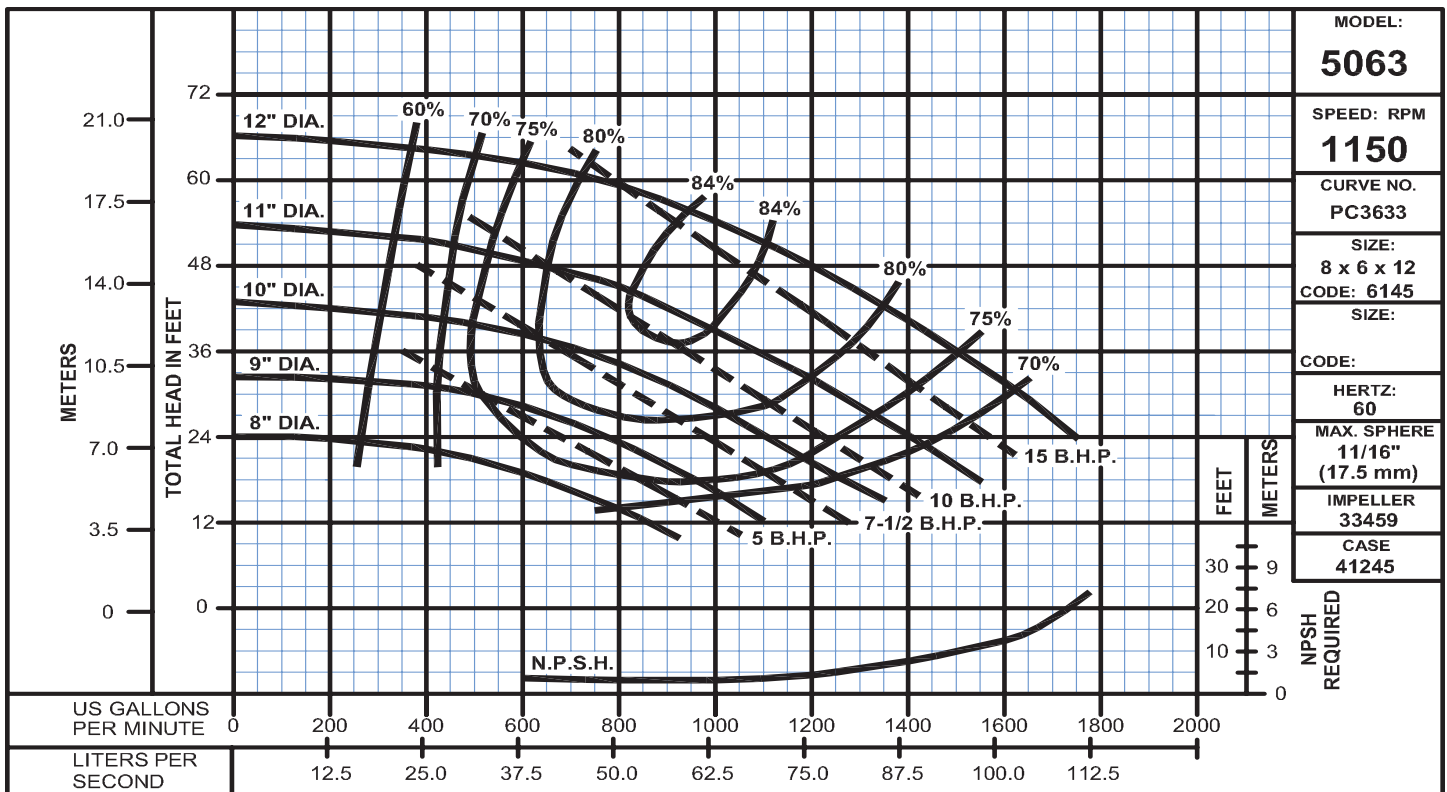
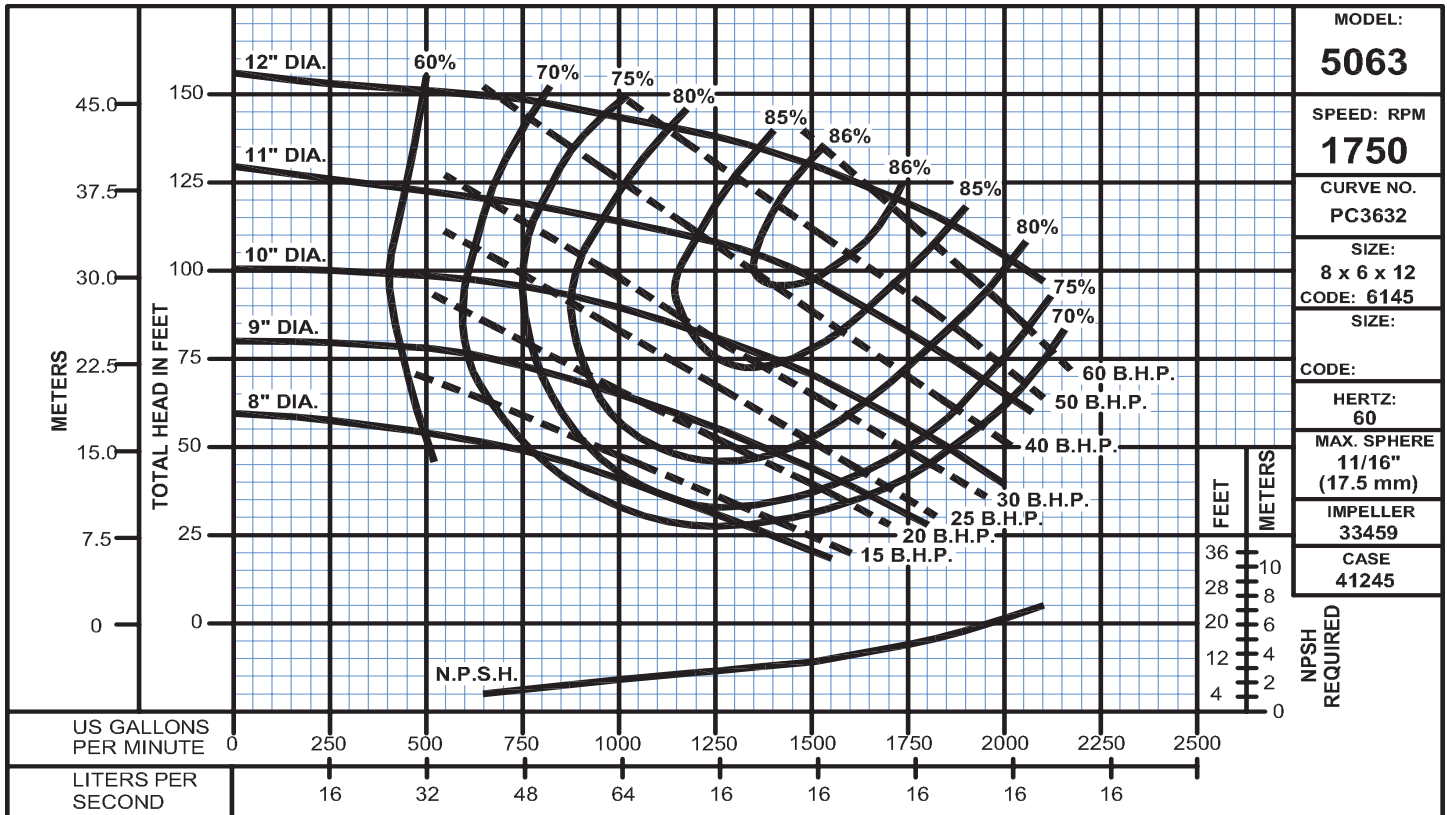


### Horizontal Split Case Centrifugal Pumps



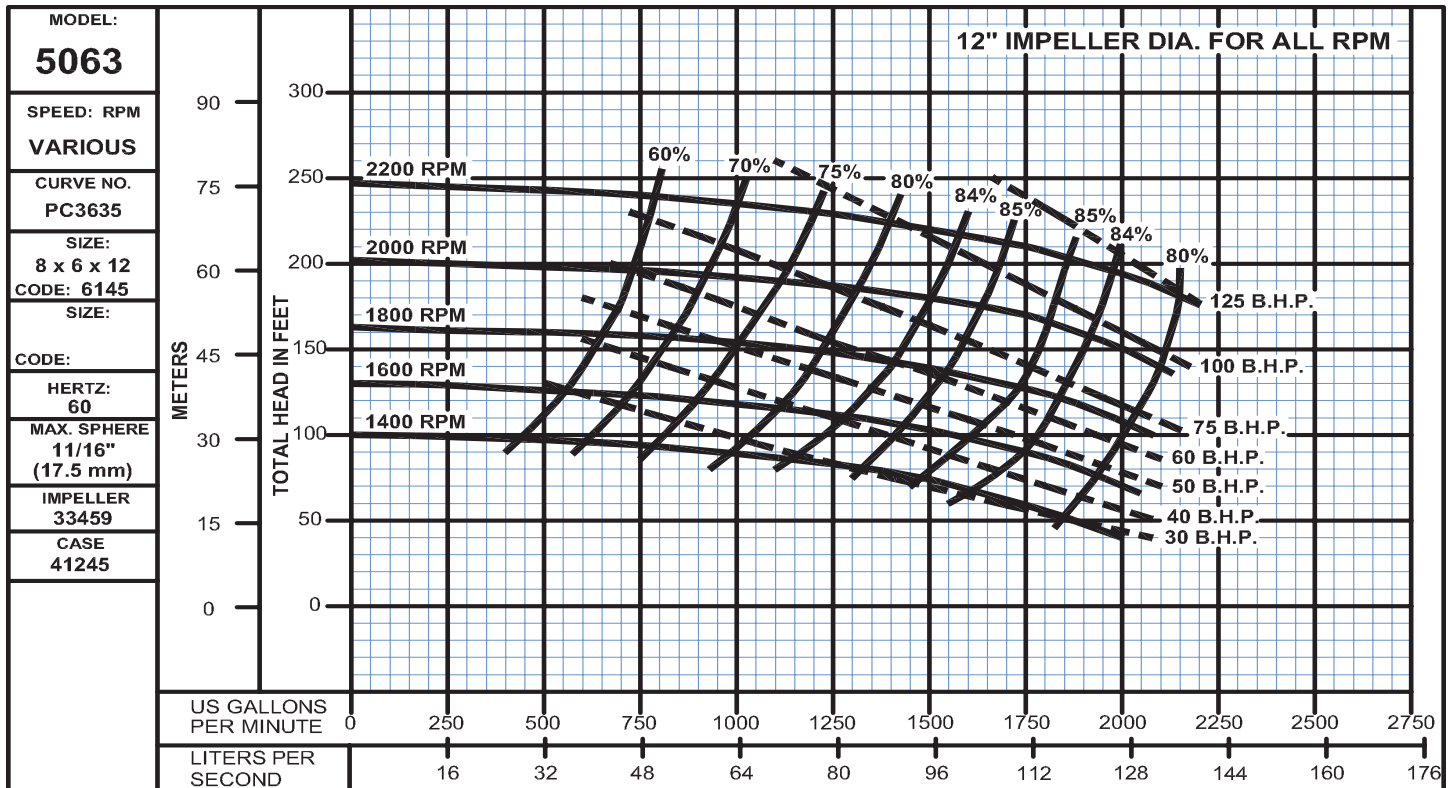
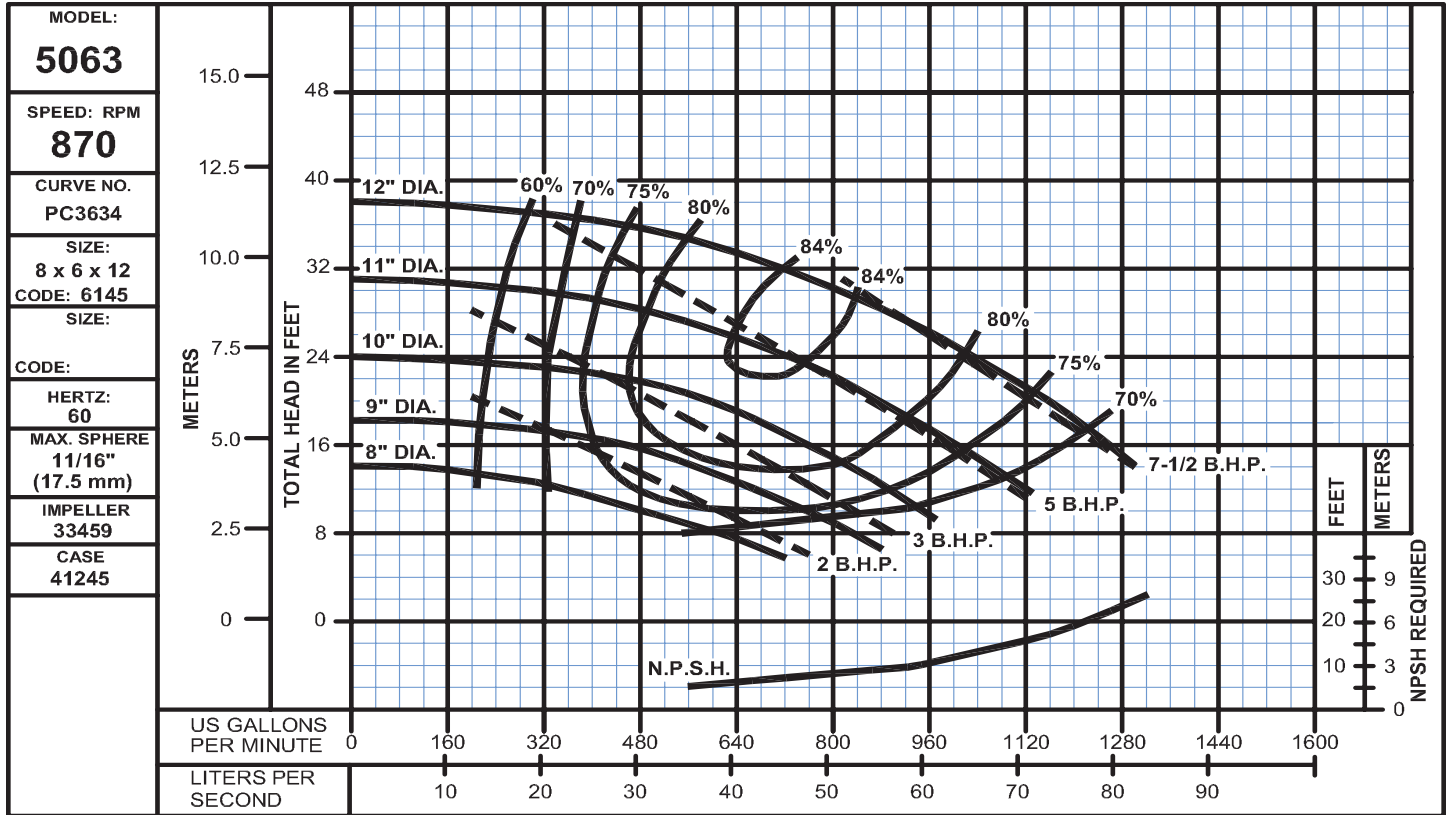
# Fig. 5063

Sizes: 8 x 6 x 12, 870 & Various RPM  
Bulletin 5060A

# DEMING®

www.cranepumps.com

## Horizontal Split Case Centrifugal Pumps



SECTION 29  
PAGE 58  
DATE 6/07

**CRANE**  
A Crane Co. Company

**PUMPS & SYSTEMS**

USA: (937) 778-8947 • Canada: (905) 457-6223 • International: (937) 615-3598