

HYDROMATIC[®] HVR200 SERIES 2 HP AUTOMATIC GRINDER PUMPS

DESTROYS WASTEWATER DEBRIS



**PATENT-PENDING AXIAL
CUTTER TECHNOLOGY**



EASY INSTALLATION



PERFORMANCE



HYDROMATIC® HVR200 SERIES AUTOMATIC GRINDER PUMPS

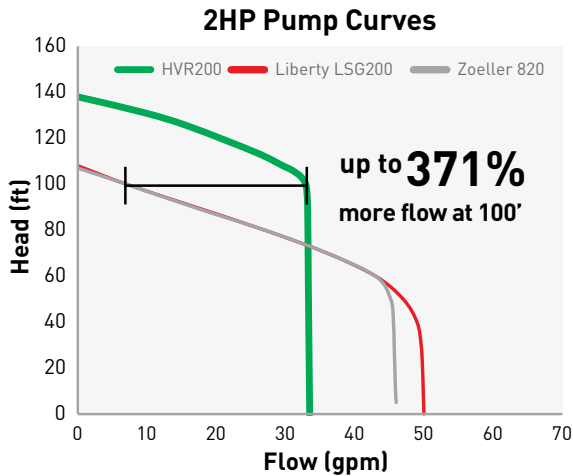
The new Hydromatic HVR200 Series grinders feature a patent-pending axial cutter technology that easily slices through solids and trash found in domestic wastewater without roping or clogging. They come with plenty of standard features to make installation a breeze.



The HVR200 is a rugged and economical solution for residential and pressure sewage systems.



OUTPERFORMING THE COMPETITION



*Based on internal test data and published competitive flow curves.



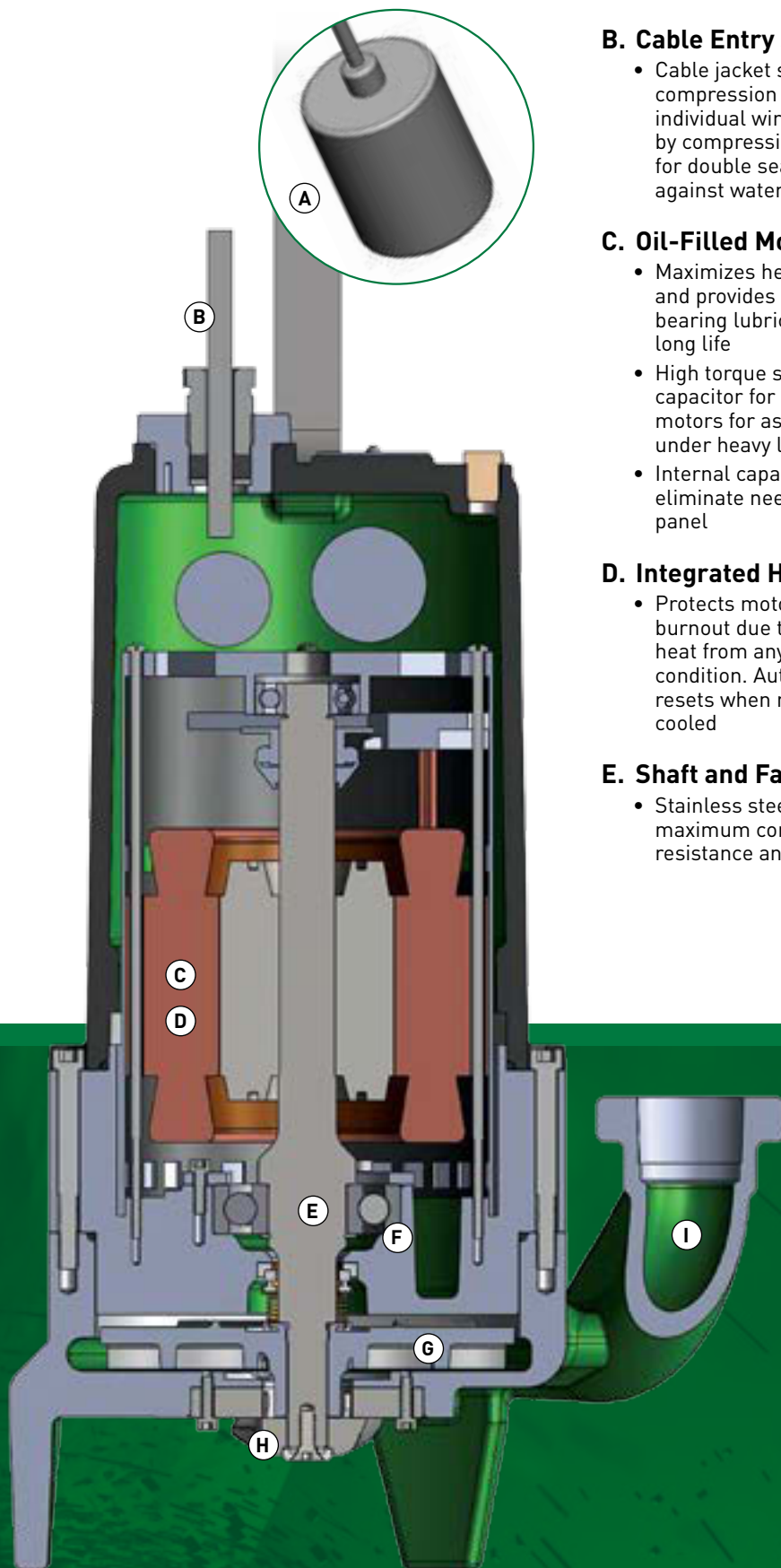
PATENT- PENDING AXIAL CUTTER TECHNOLOGY

Easily slices through solids and trash found in domestic wastewater without roping or clogging.

Watch the video at www.hydraulic.com



FEATURES



A. Wide Angle Float Switch

- Piggy-back cord for easy maintenance

B. Cable Entry System

- Cable jacket sealed by compression fitting and individual wires sealed by compression grommet for double seal protection against water ingress

C. Oil-Filled Motor

- Maximizes heat dissipation and provides constant bearing lubrication for long life
- High torque start/run capacitor for single phase motors for assured starting under heavy loads.
- Internal capacitors eliminate need for control panel

D. Integrated Heat Sensor

- Protects motor from burnout due to excessive heat from any overload condition. Automatically resets when motor has cooled

E. Shaft and Fasteners

- Stainless steel for maximum corrosion resistance and long life

F. Shaft Seals

- Oil lubricated single carbon and ceramic faced seal provides motor protection

G. Impeller

- Semi-open impeller handles ground slurry without clogging or binding
- Pump-out vanes help keep trash from seal and reduces pressure at seal face for longer life

H. Axial Cutter System

- Easily slice through solids and trash commonly found in domestic wastewater without roping or clogging
- Constructed of 440 SST hardened to 57-60Rc for long life
- Easily replaceable without dismantling pump

I. Volute Case

- Cast iron, 1-1/4" vertical, flanged discharge

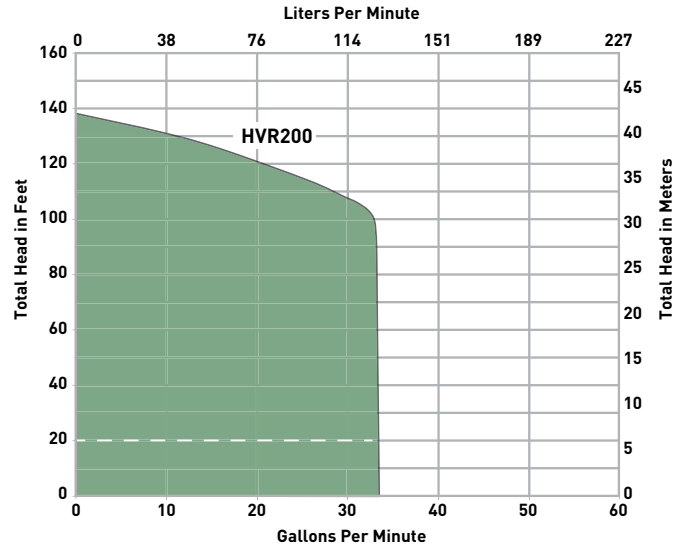
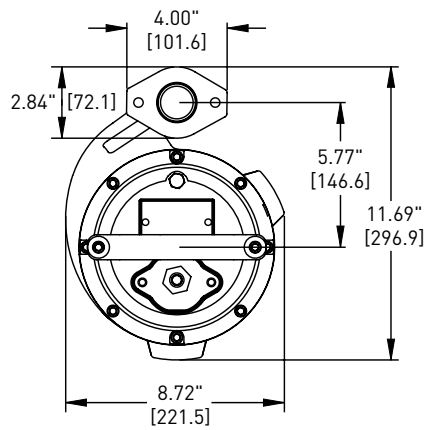
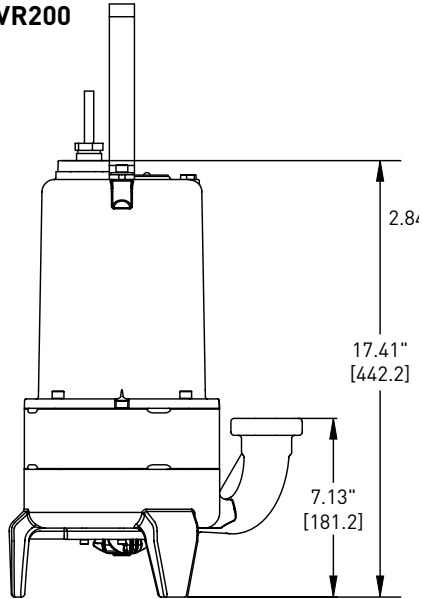


PERFORMANCE DATA AND DIMENSIONS

3450 RPM

[Dimensions in mm]

HVR200



Refer to factory for applications below dotted line.

Product Capabilities

Capacities To:	33 gpm	125 lpm
Heads To:	138 ft.	42.1 m
Liquids Handling	domestic raw sewage	
Intermittent Liquid Temp.	up to 140°F	up to 60°C
Winding Insulation Temp. (Class F)	311°F	155°C
Motor Electrical Data	3450 rpm, 60 Hz, 1 ph, 230V	
Std. Third Party Approvals	CSA	
Acceptable pH Range	6 - 9	
Specific Gravity	.9 - 1.1	
Viscosity	28 - 35 SSU	
Discharge (Flange Dia.)	1-1/4 in.	31.75 mm
Min. Sump Diameter	HVR200 Simplex HVR200 Duplex	24 in. 36 in.
		61.0 cm 91.4 cm

Electrical Data

Model	Engineering Number	HP	Voltage	Phase	Hz	Amps	Cord Length	Discharge	Switch	Weight
HVRS200M2-2	153890017	2	230	1	60	15	20	1-1/4"	Auto	95
HVRS200A2-2	153890007	2	230	1	60	15	20	1-1/4"	Manual	95

Construction Materials

Motor Housing, Seal Housing, Cord Cap and Volute Case	Cast Iron, Class 30, ASTM A48
Semi-Open Impeller	Stainless steel
Power Cord	SJ00W
Mechanical Seals: Standard	Carbon and Ceramic
Pump, Motor Shaft	416 SST
Fasteners	300 Series SST
Cutting Mechanism	440 SST 58-60 Rockwell



1101 MYERS PARKWAY, ASHLAND, OH 44805 WWW.HYDROMATIC.COM
PH: 419-289-1144

Because we are continuously improving our products and services, Pentair reserves the right to change specifications without prior notice.