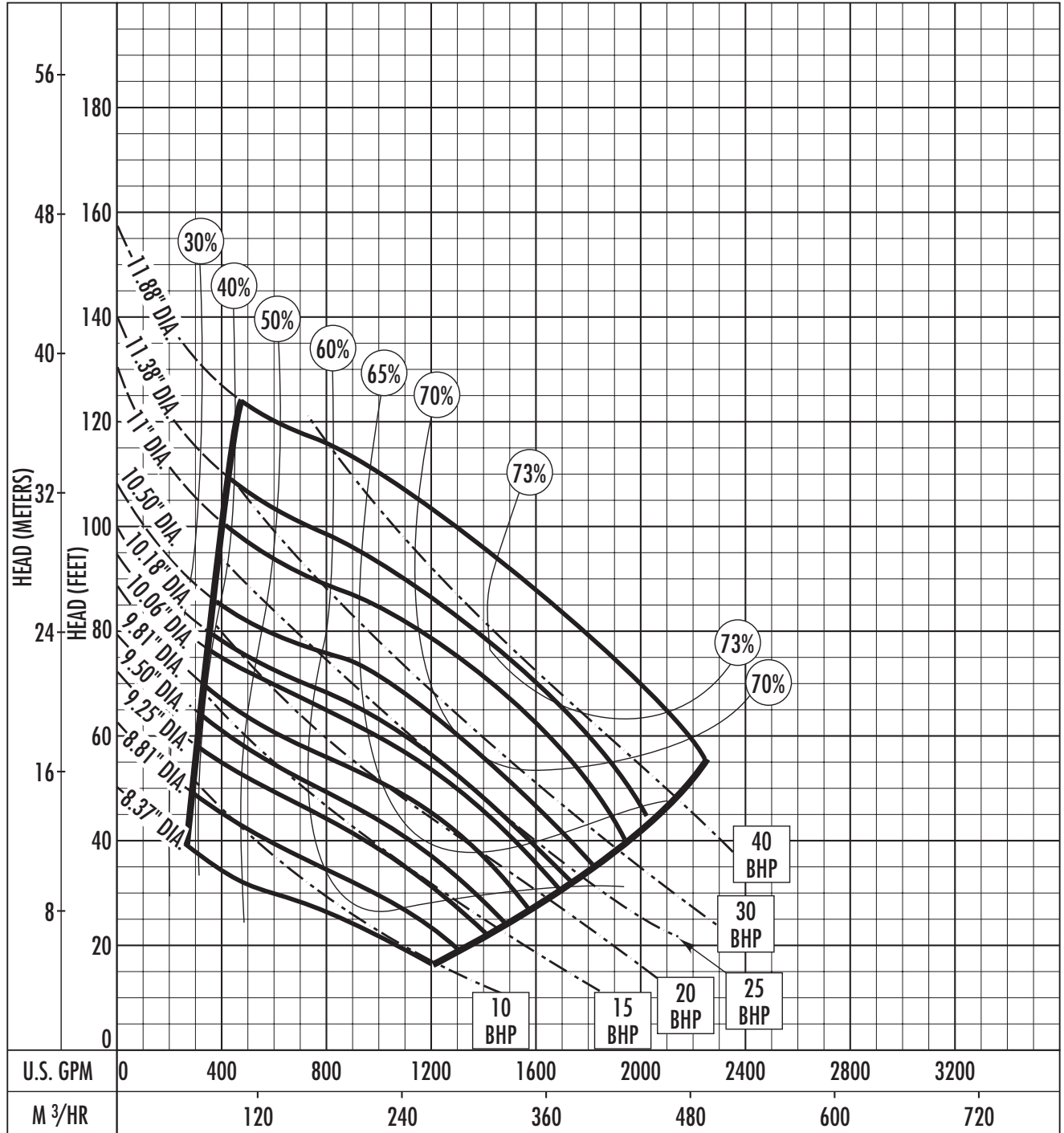


Performance Curve – S6L/S6LX

RPM: **1750** DISCHARGE: **6"** SOLIDS: **3-1/4"**

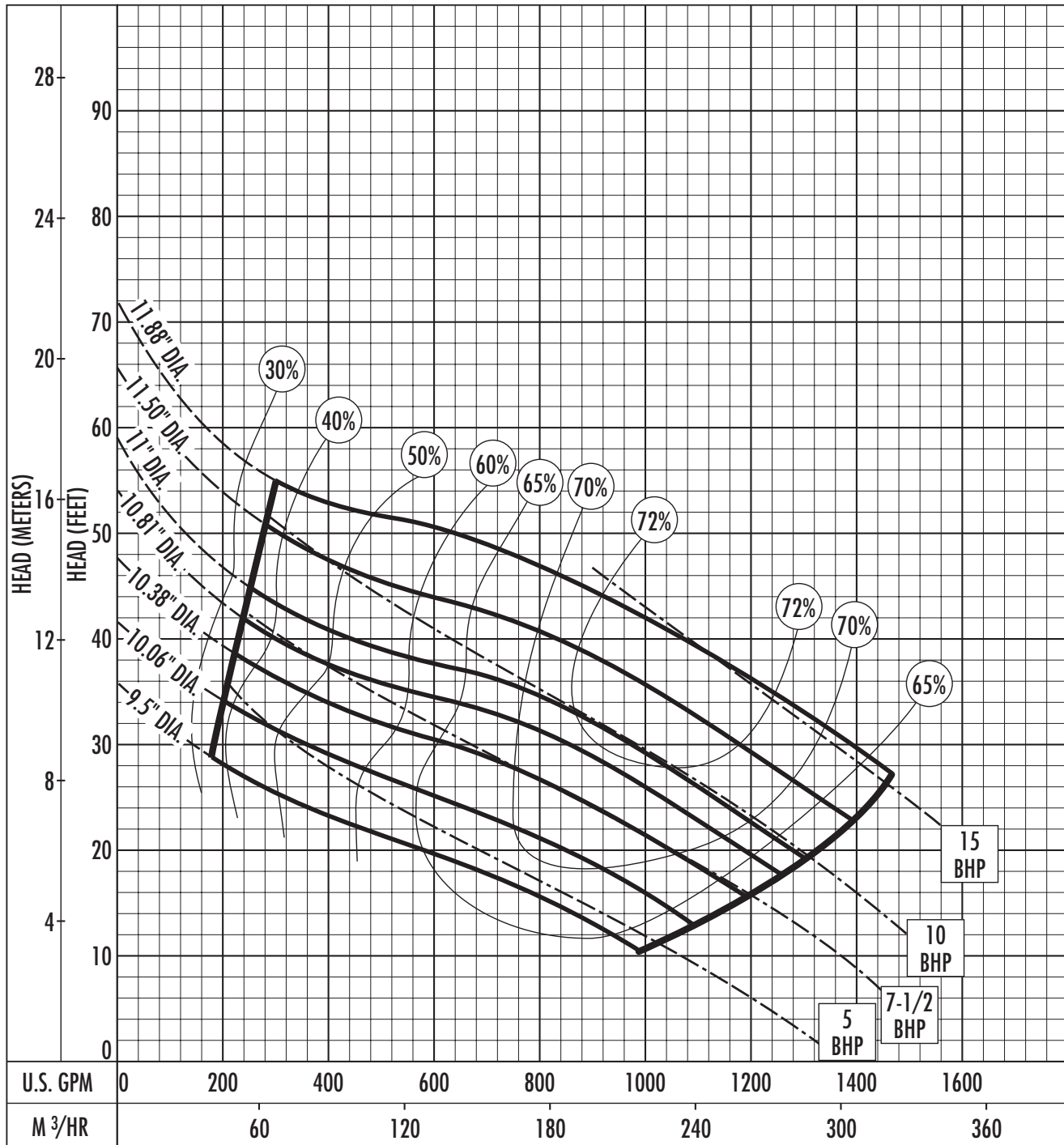


The curves reflect maximum performance characteristics without exceeding full load (Nameplate) horsepower. All pumps have a service factor of 1.2. Operation is recommended in the bounded area with operational point within the curve limit. Performance curves are based on actual tests with clear water at 70° F. and 1280 feet site elevation.

Conditions of Service:

Performance Curve – S6L/S6LX

RPM: **1150** DISCHARGE: **6"** SOLIDS: **3-1/4"**



The curves reflect maximum performance characteristics without exceeding full load (Nameplate) horsepower. All pumps have a service factor of 1.2. Operation is recommended in the bounded area with operational point within the curve limit. Performance curves are based on actual tests with clear water at 70° F. and 1280 feet site elevation.

Conditions of Service:

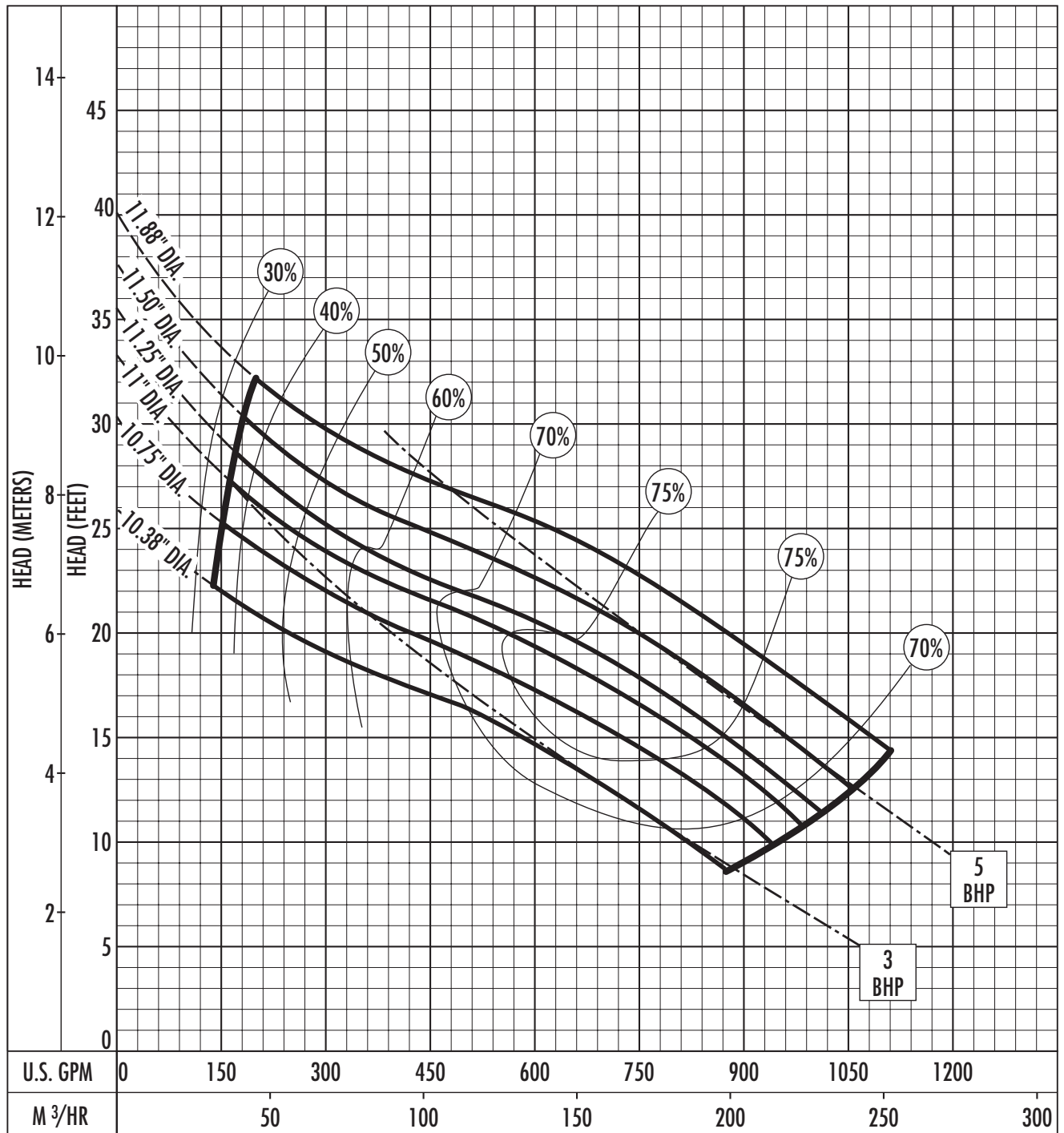


HYDROMATIC®

GPM: _____ TDH: _____

Performance Curve – S6L/S6LX

RPM: **870** DISCHARGE: **6"** SOLIDS: **3-1/4"**



The curves reflect maximum performance characteristics without exceeding full load (Nameplate) horsepower. All pumps have a service factor of 1.2. Operation is recommended in the bounded area with operational point within the curve limit. Performance curves are based on actual tests with clear water at 70° F. and 1280 feet site elevation.

Conditions of Service: