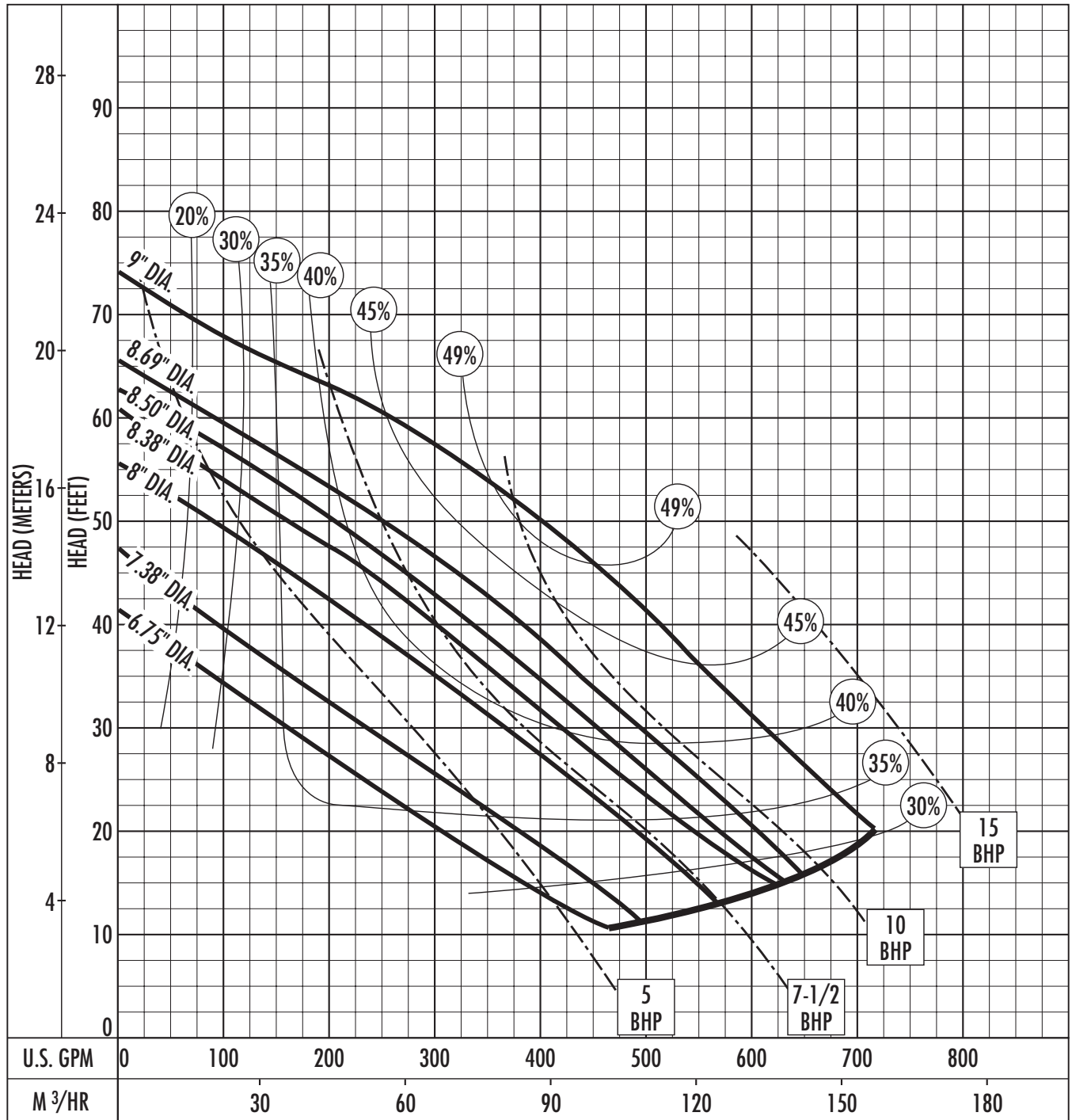


Performance Curve – S4MRC/S4MVX

RPM: **1750** DISCHARGE: **4"** SOLIDS: **3"**

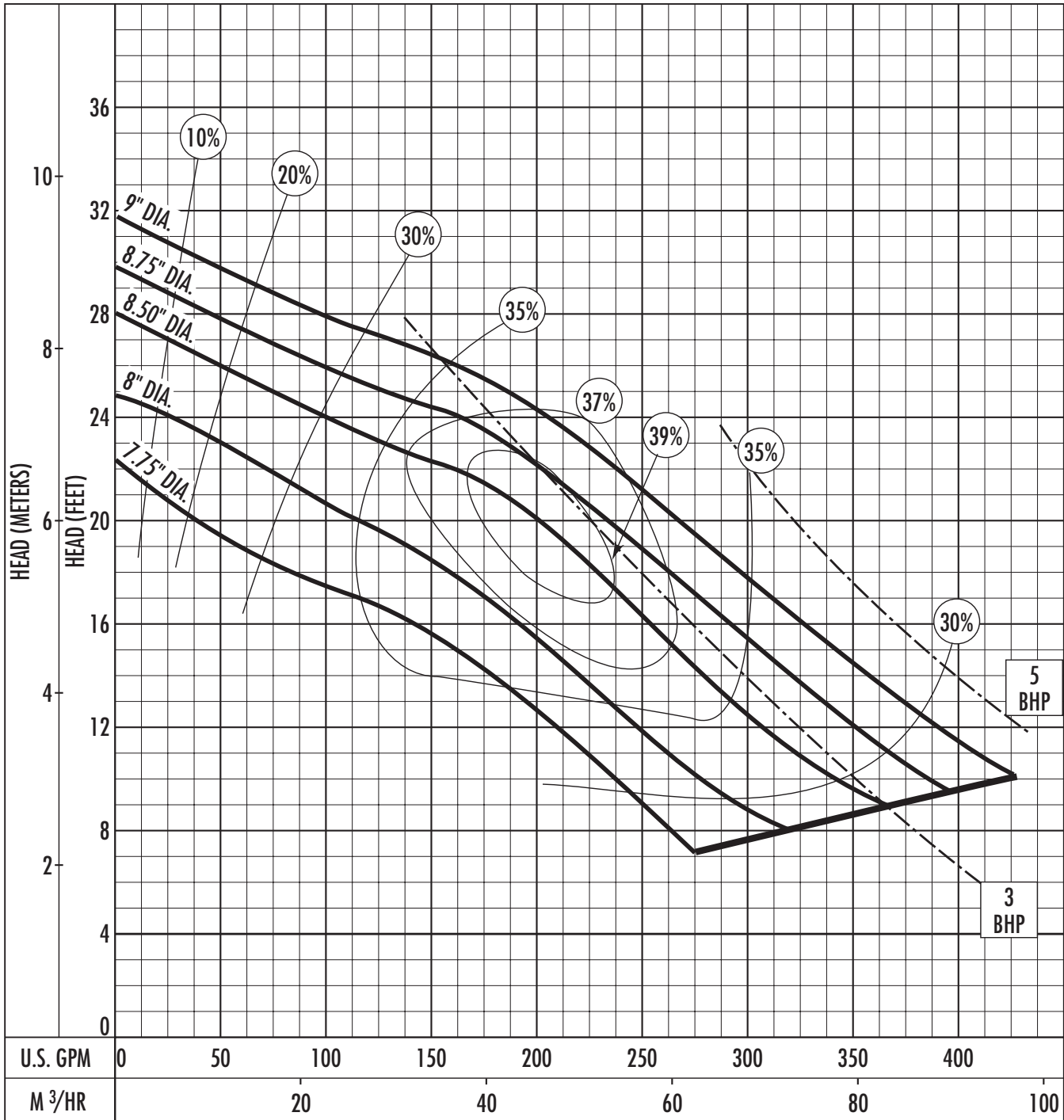


The curves reflect maximum performance characteristics without exceeding full load (Nameplate) horsepower. All pumps have a service factor of 1.2. Operation is recommended in the bounded area with operational point within the curve limit. Performance curves are based on actual tests with clear water at 70° F. and 1280 feet site elevation.

Conditions of Service:

Performance Curve – S4MRC/S4MVX

RPM: **1150** DISCHARGE: **4"** SOLIDS: **3"**



The curves reflect maximum performance characteristics without exceeding full load (Nameplate) horsepower. All pumps have a service factor of 1.2. Operation is recommended in the bounded area with operational point within the curve limit. Performance curves are based on actual tests with clear water at 70° F. and 1280 feet site elevation.

Conditions of Service:



HYDROMATIC®

GPM: _____ TDH: _____