



HYMAX[®] VERSA

WIDE-RANGE COUPLING OR REPAIR CLAMP (1.5"-5")

HYMAX[®]
Repair the past. Connect the future.

INSTALLATION INSTRUCTIONS

DO NOT DISASSEMBLE THE COUPLING. DO NOT LUBRICATE THE BOLTS.

THE HYMAX VERSA COUPLING MAY BE USED AS A NON-RESTRAINING STAB TYPE COUPLING OR A WRAPAROUND FULL CIRCLE REPAIR CLAMP.

NOTE: HYMAX VERSA HAS LIMITED TRANSITION CAPABILITIES WHEN INSTALLED ACCORDING TO INSTALLATION INSTRUCTIONS, THE HYMAX VERSA 1.5"-5" DIAMETER CAN TRANSITION BETWEEN TWO PIPE ENDS –SEE TABLE FOR MAXIMUM TRANSITION, MINIMUM STAB DEPTH AND MAXIMUM OFFSET FOR SHEAR BREAK AND MISALIGNED PIPE.

REFERENCE TABLE*

SIZE	MAX. TRANSITION	MIN. STAB DEPTH	MAX. OFFSET
1.5"-3" / Length 5.5"	0.15"	1.8"	0.25"
1.5"-3" / Length 11"	0.15"	2.2"	0.4"
3"-5" / Length 11"	0.25"	2.4"	0.4"

* See product label for nominal pipe size range

STEP 1



Prepare both pipe ends of the existing pipe by descaling if required. Clean the pipe as required using water. Make sure that the pipes are clear from debris and defects that may interfere with the HYMAX VERSA'S proper seal.

NOTE: Except steel, PVC, and PE pipes, all rough-surfaced pipes must be lubricated with a water-based gasket lubricant in order to achieve a proper seal.

STEP 2



Measure the pipe's outer diameter and make sure the coupling's size will fit the pipe properly.

NOTE: Each coupling's size range is shown on the product's label. Ensure that the pipe is not out of round and is free of scratches, dents, flats or other defects which may interfere with the coupling's proper seal. The coupling may not fit well or function properly on pipe which is out of round or damaged.

STEP 3

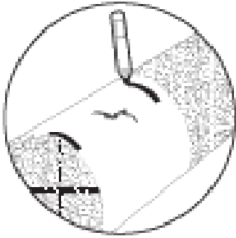
Unpack and carefully remove the coupling from its packaging. DO NOT use any kind of hammer to move it into position! Proper sizing will allow the coupling to go on easily.

NOTE: If using HYMAX VERSA as a repair clamp, proceed to step 4.
If using as a stab type coupling, proceed to step 10.

REPAIR CLAMP INSTRUCTIONS

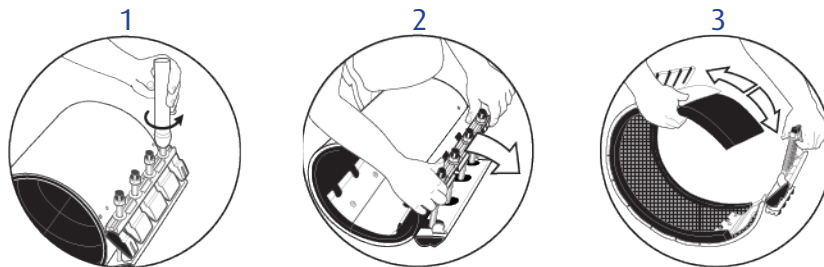
STEP 4

Mark the pipe evenly on both sides of the crack according to the length of the product.



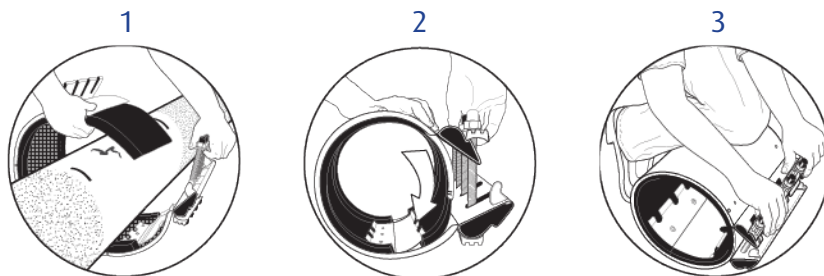
STEP 5

Open the HYMAX VERSA by loosening the nuts (1), so they are level with the tops of the bolts. **DO NOT REMOVE THE NUTS!** Partially compress the lug assembly. (2) Pull upwards on the lug compression beam and unlatch the lug assembly allowing the clamp to extend to a fully open position (3).



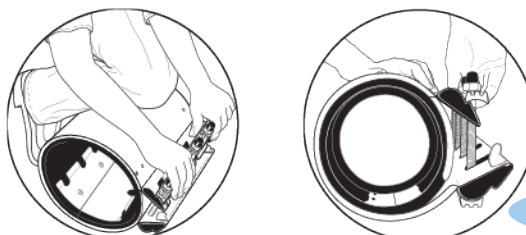
STEP 6

Position the HYMAX VERSA around the pipe (1). Make sure that the gasket is on the surface of the pipe. At the same time, pull on the compression beam with one hand and with the other hand push on the gasket and position it (2) between the body and the internal guiding plate. If needed, use your knee (3) to support the VERSA against the pipe to prevent it from turning.



Once the HYMAX VERSA is around the pipe, engage the compression beam until it "clicks" into the 1st closing position (see below). The HYMAX VERSA can now be positioned over the leak covering the marks on both sides (see step 4).

1st Closing Position



STEP 7

Once the HYMAX VERSA is located over the leak, engage the compression until it "clicks" into the second closing position. Tighten the compression nuts, making sure the lock teeth are aligned with their guiding slots (see drawing 2).

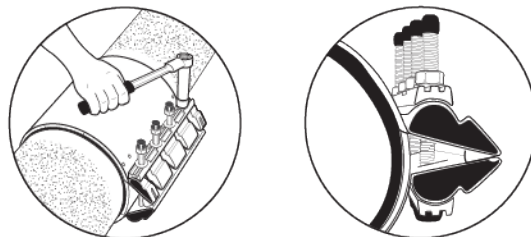
2nd and final Closing Position



STEP 8

Tighten all of the nuts evenly, working from the center of the lug assembly towards the end of the HYMAX VERSA. Verify again that all nuts are closed to the torque specified on the label. Use of a torque wrench is mandatory.

NOTE: Do not lubricate bolts as this will void product warranty.



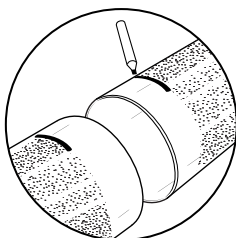
STEP 9

Recharge the line and check for leaks. If any leakage across the seal end is evident, reduce the pressure in the line and increase the labeled torque of the bolts up to 50%.

STAB TYPE COUPLING INSTRUCTIONS:

STEP 10

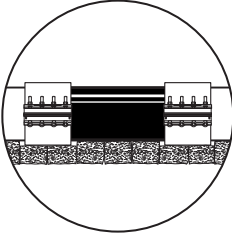
Mark the pipe ends to the proper minimum stab depth as appears in the product label.



STEP 11

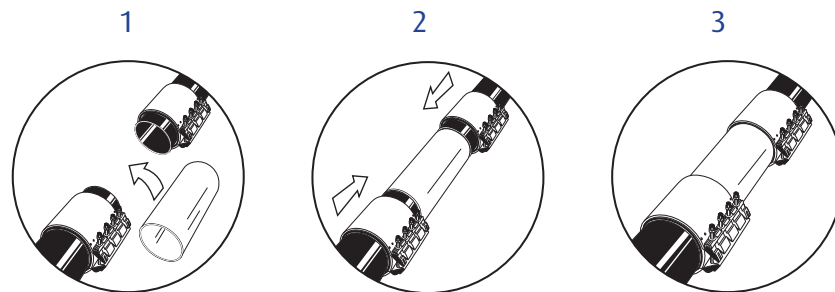
Make sure that the pipe is properly supported.

NOTE: The HYMAX VERSA is not designed to carry the weight of the pipes by itself.



STEP 12

Position the coupling: Place the entire coupling on the replacement pipe (one coupling on each end) and lower the pipe and couplings into the ditch. Slide the couplings outward so that they are centered over the area to be joined covering the marks on the pipe (step 10). Make sure that the pipes are not touching each other inside the body of the VERSA. There must be space between the pipes in order for continuous dynamic deflection (CDD) to take place.

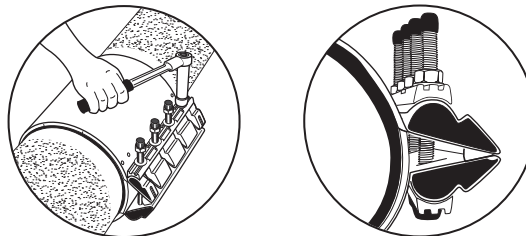


STEP 13

Tighten all of the nuts evenly, working from the center of the lug assembly towards the end of the HYMAX VERSA. Verify again that all nuts are closed to the torque specified on the label.


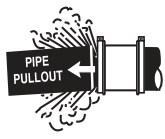


NOTE: Do not lubricate bolts as this will void product warranty.

NOTE: Use of a torque wrench is mandatory. The torque wrench will verify the proper torque has been achieved.



STEP 14

Recharge the line and check for leaks. If any leakage across the seal end is evident, reduce the pressure in the line and increase the labeled torque of the bolts up to 50%.

 WARNING 	<p>This product does not restrain axial pipe movement. Proper anchorage of the pipe is required if this product is used as a coupling. Failure to anchor the pipe ends could result in the escape of line content, and may cause property damage, serious injury or death.</p>	 WARNING 	<p>Caution: This product is not intended for use on natural gas piping, or any other type of gas piping. To do so could result in escaping gas that could ignite and cause property damage, serious injury or death.</p>
---	--	---	---

KRAUSZ USA. 331 SW 57TH AVENUE, OCALA, FLORIDA 34474 • INFO@KRAUSZUSA.COM

FOR ORDERING INFORMATION OR TO SPEAK WITH A KRAUSZ REPRESENTATIVE PLEASE CONTACT US AT:
855-457-2879 OR 855-4KRAUSZ. • FAX: 352-304-5787 • WWW. KRAUSZUSA.COM

Hymax® Versa is a registered trademark of Krausz Industries Ltd.