

# INSTALLATION INSTRUCTIONS

# HYMAX<sup>®</sup>2



## THREADED OUTLET AND FLANGED OUTLET (2" - 12")

**DO NOT DISASSEMBLE THE COUPLING. DO NOT LUBRICATE THE BOLTS. DO NOT TEAR THE GASKET - SEE INSTRUCTIONS.**

### GENERAL INSTRUCTIONS:

THE HYMAX2 THREADED OUTLET AND THE HYMAX2 FLANGED OUTLET ARE STAB-ON TYPE COUPLINGS.

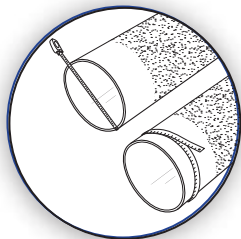
#### STEP 1



Prepare both pipe ends of the existing pipe by descaling if required. Clean the pipe as required using water. Make sure that the pipes are clear from debris and defects that may interfere with the HYMAX2 Outlet's proper seal.

**NOTE:** Except steel, PVC, and PE pipes, all rough surfaced pipes must be lubricated with a water-based gasket lubricant in order to achieve a proper seal.

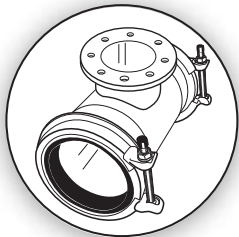
#### STEP 2



Measure the pipes' OD twice and make sure the coupling's size will fit the pipes properly.

**NOTE:** Each coupling's size range is shown on the product's label. Ensure that the pipe is not out of round and is free of scratches, dents, flats or other defects which may interfere with the coupling's proper seal. The coupling may not fit well or function properly on pipe which is out of round or damaged.

#### STEP 3



Unpack the coupling. Carefully remove the coupling from its packaging. Inspect the coupling, if the end rings are not centered on the coupling DO-NOT-USE. Contact your distributor for return and replacement!  
DO NOT attempt to hammer the end ring into place! This will damage the end ring and void the warranty!

**NOTE:** The HYMAX2 Outlet is a stab on coupling. Do not remove the end ring bolts.

**NOTE:** Bolts are pre-lubricated with a MAG dry coating. Do not lubricate the bolts and nuts. Greasing or lubricating bolts or nuts voids manufacturer's warranty.

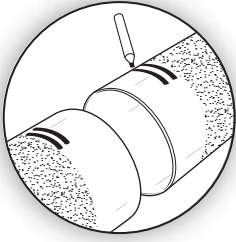
# HYMAX<sup>®</sup>

Repair the past. Connect the future.

**KRAUSZ** is the creator of HYMAX

#### STEP 4

Mark each pipe end.



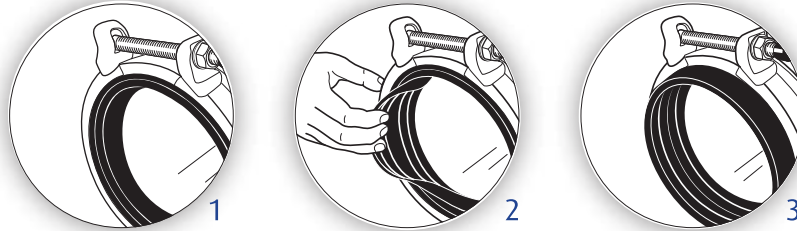
**NOTE:** Make 2 markings on each pipe - one for the closed position of the gasket and one for the open (flip) position. The mark for minimum stab depth which is closer to the product is at a distance of 2.25" from the edge, the mark further away at 3.25", which is for the open gasket position.

#### STEP 5

The coupling's gasket system has two positions - A closed gasket position and an open gasket position. The open position is used to accommodate larger OD pipes within the working range. If a larger OD pipe is used, hold the gasket with your fingers and unfold it to an open position. Look for the working range on the product label to determine if the product range is within the higher or the lower range.

**NOTE:** Do not tear the gasket.

**NOTE:** Measure the OD of the pipe TWICE using an OD tape!



#### STEP 6

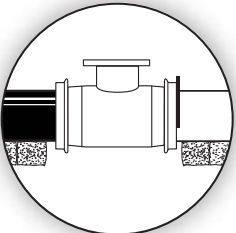
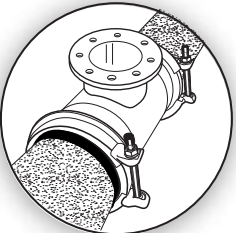
Position the Coupling for installation. If possible place the coupling(s) on the replacement pipe (on both ends) with top-facing bolts and lower the pipe and couplings into the ditch. Slide the couplings outward so that it covers the marks made in step 4.

Make sure that the pipes are not touching inside the body of the HYMAX Outlet. There must be space between the pipes in order for continuous dynamic deflection (CDD) to take place.

Make sure that the pipes are properly supported.

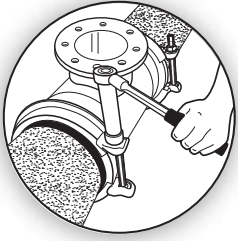
**NOTE:** HYMAX is not designed to support the weight of the pipes by itself. For uncoated ductile iron, grey cast iron and asbestos cement pipe surfaces - appropriate water-based gasket lubricant is required on both gaskets inside surface and pipe's outer surface.

**DO NOT LUBRICATE BOLTS!**



## STEP 7

Tighten the coupling bolts to the right torque shown on the product label. When you finish, re-check the torque again.

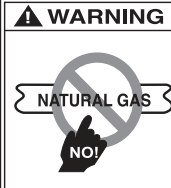


**NOTE:** Use of a torque wrench to tighten the bolts is required. A torque wrench will assure a proper torque has been applied to the coupling. Do not use other tools to tighten the coupling's bolts!

## STEP 8

Recharge the line and check for leaks. If any leakage is evident, reduce the pressure in the line and increase bolt's torque up to 50%. Verify again there are no leaks along the seal.

	<p><b>WARNING</b> This product does not restrain axial pipe movement. Proper anchorage of the pipe is required if this product is used as a coupling. Failure to anchor the pipe ends could result in the escape of line content, and may cause property damage, serious injury or death.</p>
---	---

	<p><b>WARNING</b> <b>Caution:</b> This product is not intended for use on natural gas piping, or any other type of gas piping. To do so could result in escaping gas that could ignite and cause property damage, serious injury or death.</p>
--	--

# **HYMAX<sup>®</sup>**

Repair the past. Connect the future.

---

 **KRAUSZ** is the creator of HYMAX

**331 SW 57TH AVENUE, OCALA, FLORIDA 34474**

**TEL: 855-457-2879 | 855-4KRAUSZ**

**FAX: 352-304-5787**

**[info@krauszusa.com](mailto:info@krauszusa.com) | [www.krauszusa.com](http://www.krauszusa.com)**

---

Hymax<sup>®</sup> is a registered trademark of Krausz Industries Ltd. Copyright © 2018 Krausz Industries Ltd., All rights reserved.  
This product is protected under a registered patent. See Krausz USA website for details.

---