

INSTALLATION INSTRUCTIONS

HYMAX[®] 2



REDUCER (1.5" - 12")

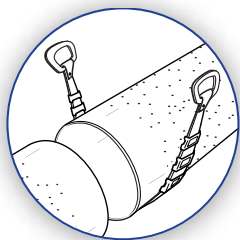
DO NOT DISASSEMBLE THE COUPLING. DO NOT LUBRICATE THE BOLTS. DO NOT TEAR THE GASKET - SEE INSTRUCTIONS.

GENERAL INSTRUCTIONS:

THE HYMAX2 REDUCER IS A STAB TYPE COUPLING.

NOTE: TIGHTEN BOLTS TO THE TORQUE VALUE PROVIDED ON THE LABEL IN ONE CONTINUOUS STEP. KRAUSZ PRODUCTS DO NOT REQUIRE A GRADUAL INCREASE OF TORQUE OVER A SPECIFIED PERIOD, NOR DO THEY REQUIRE RE-TORQUE. THE MINIMAL TORQUE REQUIREMENTS MUST BE ACHIEVED PRIOR TO ANY RECHARGING OF THE LINE.

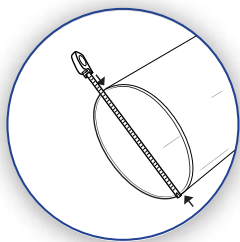
STEP 1



Prepare both pipe ends of the existing pipe by descaling if required. Clean the pipe as required using water. Make sure that the pipe is clear from debris and defects that may interfere with the HYMAX Reducer's proper seal.

NOTE: Except steel, PVC, and PE pipes, all rough-surfaced pipes must be lubricated with a water-based gasket lubricant in order to achieve a proper seal.

STEP 2



Measure both pipes' outer diameters and make sure the Reducer's size will fit the pipes properly on both sides which are different in diameter.

NOTE: Each coupling's size range is shown on the product's label. Ensure that the pipes are not out of round and free of scratches, dents, flats or other defects which may interfere with the reducer's proper seal. The reducer may not fit well or function properly on pipe which is out of round or damaged.

STEP 3

Unpack the HYMAX2 Reducer. Carefully remove the Reducer from its packaging.

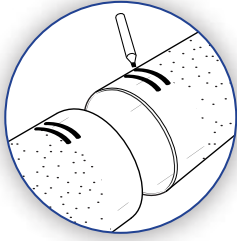
Inspect the HYMAX2 Reducer, if the end rings are not centered on the coupling do not use! Contact your distributor for return and replacement!

NOTE: The HYMAX2 Reducer is a stab on coupling. Do not remove the end ring bolts.

NOTE: Bolts are pre-lubricated with a MAG (Molecular Anti Galling) dry coating. Do not lubricate the bolts and nuts. Greasing or lubricating bolts or nuts voids manufacturer's warranty.

HYMAX[®]
Repair the past. Connect the future.
KRAUSZ is the creator of HYMAX

STEP 4



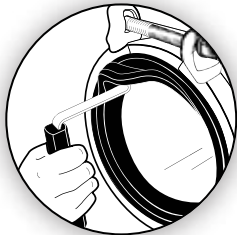
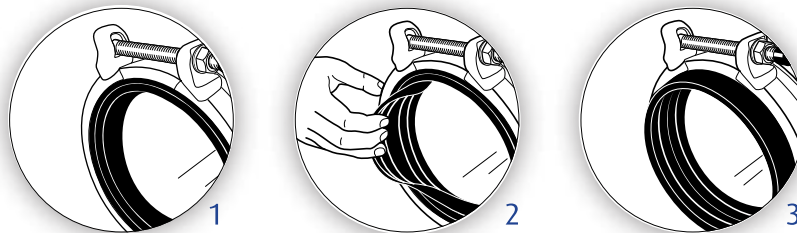
Mark each pipe end.

NOTE: Make 2 markings on each pipe - one for the closed position of the gasket and one for the open (flip) position. The mark for minimum stab depth which is closer to the product is at a distance of 2.25" from the edge, the mark further away at 3.25", which is for the open gasket position.

STEP 5

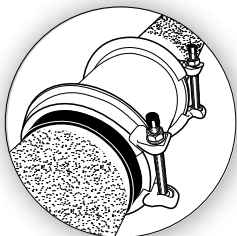
The coupling's gasket system has two positions - A closed gasket position and an open gasket position. The open position is used to accommodate larger OD pipes within the working range. If a larger OD pipe is used, hold the gasket with your fingers and unfold it to an open position. Look for the working range on the product label to determine if the product range is within the higher or the lower range.

NOTE: Do not tear the gasket.



For size 1.5" only - use a lever (provided with product) to flip the gasket out if wider pipe diameter is required.

STEP 6



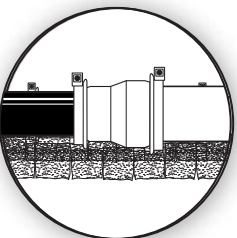
Position the coupling for installation. Make sure that the different product diameters fit the different pipes. Place the coupling on the pipe with top-facing bolts. Slide the coupling so that it covers the marks made in step 4. Make sure that the pipes are not touching inside the body of the HYMAX2. There must be space between the pipes in order for continuous dynamic deflection (CDD) to take place.

Make sure that the pipes are properly supported.

NOTE: The Hymax2 Reducer is not designed to carry the weight of the pipes by itself.

For uncoated ductile iron, grey cast iron and asbestos cement pipe surfaces - appropriate water-based gasket lubricant is required on both gaskets inner surface and pipe's outer surface. Do not lubricate PVC, steel or any PE pipe surfaces.

DO NOT LUBRICATE BOLTS!



STEP 7



Tighten the end rings. Tighten the coupling bolts to the right torque shown on the product's label. When you finish, re-check the torque again.

NOTE: Use of a torque wrench to tighten the bolts is required. A torque wrench will assure a proper torque has been applied to the coupling. Do not use other tools to tighten the coupling's bolts!


STEP 8


Recharge the line and check for leaks. If any leakage is evident, reduce the pressure in the line and increase bolt's torque up to 50%. Verify again there are no leaks along the seal.

 WARNING	This product does not restrain axial pipe movement. Proper anchorage of the pipe is required if this product is used as a coupling. Failure to anchor the pipe ends could result in the escape of line content, and may cause property damage, serious injury or death.
--	---



PIPE PULLOUT

 WARNING	Caution: This product is not intended for use on natural gas piping, or any other type of gas piping. To do so could result in escaping gas that could ignite and cause property damage, serious injury or death.
--	--



NATURAL GAS
NO!

HYMAX[®]

Repair the past. Connect the future.

 **KRAUSZ** is the creator of HYMAX

331 SW 57TH AVENUE, OCALA, FLORIDA 34474

TEL: 855-457-2879 | 855-4KRAUSZ

FAX: 352-304-5787

info@krauszusa.com | www.krauszusa.com

Hymax[®] is a registered trademark of Krausz Industries Ltd. Copyright © 2018 Krausz Industries Ltd., All rights reserved.
This product is protected under a registered patent. See Krausz USA website for details.
