

# MYERS® ME40AG SERIES

The Myers ME40AG series submersible pumps are engineered specifically for agricultural cooling systems. Our modified design features an enclosed two-vane impeller to deliver optimal flow and head. To withstand harsh sump conditions, the pumps are constructed of the highest quality materials. An ME40AG pump will provide years of reliable service.

## APPLICATIONS

Agricultural cooling systems, sump drainage, water transfer

## SPECIFICATIONS

**Capacities** – 70 GPM (265 LPM)  
**Shut-off Head** – 33' (10 m)  
**Operation** – Manual or automatic  
**Solids Handling** – 3/4" (19 mm)  
**Liquids Handling** – Sump or recirculated water  
**Intermittent Liquid Temperature** – Up to 140°F (60°C)  
**Motor/Electrical Data** – 4/10 HP, 1650 RPM, permanent split capacitor type, 115V, 8A, 1Ø, 50/60Hz; 230V, 4A, 1Ø, 50/60Hz  
**Acceptable pH Range** – 6-9  
**Specific Gravity** – .9-1.1  
**Viscosity** – 28-35 SSU  
**Discharge, NPT** – 1-1/2" (38.1 mm)  
**Housing** – Cast iron, class 30, ASTM 48  
**Motor Bearings** – Ball bearing-lower, top-sleeve  
**Impeller** – Enclosed, engineered thermoplastic  
**Impeller Wear Ring** – 304 SST  
**Volute** – Thermoplastic  
**Mechanical Shaft Seal** – Type 6, carbon and ceramic  
**Fasteners** – 300 series SST  
**Power Cord** – 10' (automatic), 20' (manual); 16/3, SJTW  
**Min. Sump Diameter** – 24" (61 cm)



## FEATURES

### Efficient Dosing

The two-vane impeller provides the flow and head required for demanding dosing systems and sump applications

### Powerful Starts

High-torque, permanent split capacitor (PSC) motor; no starting switches or relays to wear out

### Rugged and Cool

Rugged-built, oil-filled motor for continuous bearing lubrication and maximum heat dissipation

### Water-tight Fit

Positive sealing, quick-connect float and switch cords make replacement easy

### Improved Sealing

Long, flexible Type 6 seal provides high-pressure sealing with improved seal face protection by location

### Automatically Better

Field-tested, wide-angle, mercury-free mechanical float switch provides maximum drawdown (automatic models only)

### Dual Operation

Automatic float switch or manual operation by plugging directly into outlet

### Thermal Overload

Heat sensor overload protection with automatic reset when motor cools to a safe operating temperature

### Pump Protection

Suction screen included to prevent debris from entering pump

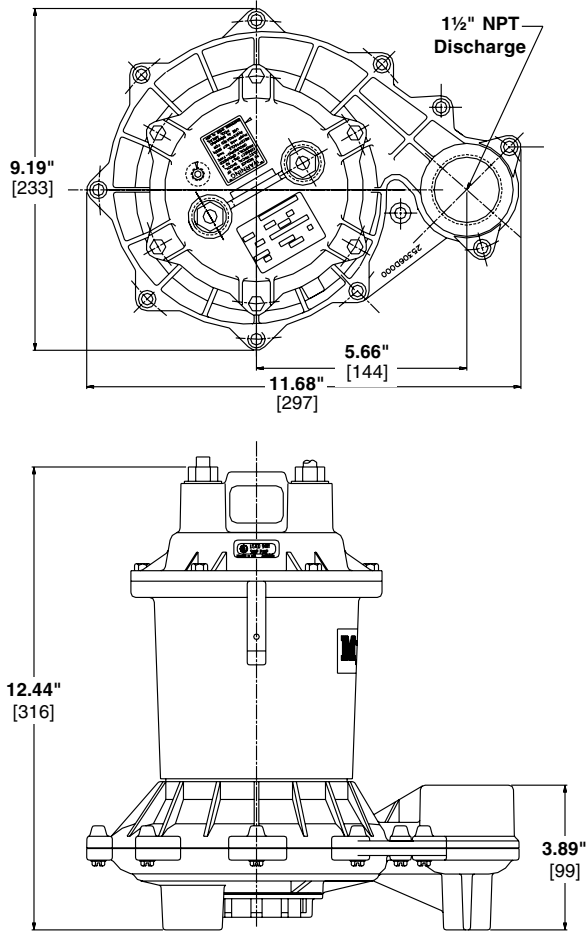
## ORDERING INFORMATION

Catalog Number	HP	Volts	Phase/Cycles	Amps	Discharge Size	Switch Type	Cord Length	Approx. Wt. Lbs.
ME40AG-11	4/10	115	1/50 1/60	8	1-1/2"	Manual	20'	27
ME40AG-21	4/10	230	1/50 1/60	4	1-1/2"	Manual	20'	27
ME40AGP-11	4/10	115	1/50 1/60	8	1-1/2"	Tethered Automatic*	20'	27
ME40AGP-21	4/10	230	1/50 1/60	4	1-1/2"	Tethered Automatic*	20'	27

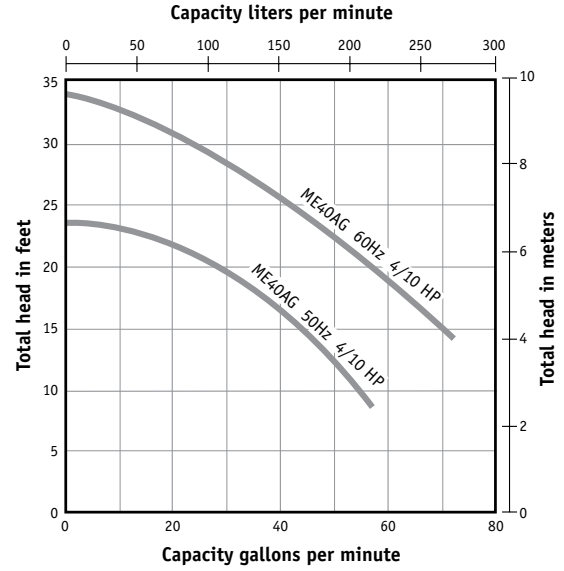
\*Piggyback

# MYERS® ME40AG SERIES

## DIMENSIONS



## PUMP PERFORMANCE



USA  
293 WRIGHT STREET, DELAVAN, WI 53115 WWW.FEMYERS.COM  
PH: 888-987-8677 ORDERS FAX: 800-426-9446

CANADA  
490 PINEBUSH ROAD, UNIT 4, CAMBRIDGE, ONTARIO N1T 0A5  
PH: 800-363-7867 ORDERS FAX: 888-606-5484

Because we are continuously improving our products and services, Pentair reserves the right to change specifications without prior notice.