

# MYERS® MW-BP

The Myers MW-BP BasinPro Packaged Sewage System is an ideal choice for new construction or retrofit. Installer-friendly features include a 360° Top Grip for easy installation. The E-Z Switch Rod lets you easily remove the float switch without affecting the basin lid, pump or plumbing. Available with a 1/2 HP high endurance motor, with 2" solids-handling capacity. Passive radon protection provided by gas-tight seal between structural foam lid and basin.



pump only



## APPLICATIONS

Sewage, high-capacity sump, effluent

## SPECIFICATIONS

**Capacities** – 135 GPM (510 LPM)  
**Shut-off Head** – 27' (8.23 m)  
**Solids Handling** – 2" (50.8 mm)  
**Liquids Handling** – Domestic sewage and drain water  
**Intermittent Liquid Temperature** – Up to 140°F (60°C)  
**Motor/Electrical Data** – 1/2 HP, 1625 RPM, PSC (1Ø), oil-filled, 115V, 9A, 1Ø, 60Hz; 230V, 4.5A, 1Ø, 60Hz  
**Acceptable pH Range** – 5-9  
**Discharge, NPT** – 2" (50.8 mm)  
**Housing** – Cast iron  
**Power Cord** – 20', 16/3, SJTW  
**Impeller** – Thermoplastic  
**Volute Case** – Class 30 cast iron  
**Shaft Seal** – Type 6, carbon and ceramic  
**Basin Size** – 24" x 24" structural foam construction; 45-gallon capacity

## FEATURES

### Fully Assembled

Pump is pre-installed in basin, with integral torque stops to ensure stability

### Oil-filled Motor

For maximum heat dissipation and continuous bearing lubrication

### Recessed Vortex Impeller

For free flow of liquids, solids up to 2" diameter

### Anti-floatation Features

Include concrete splash lip and unique basin shape to keep the system from floating or becoming "un-installed"

### Integral 360° Top Grip

For easy lifting and handling in tight spaces

### Stackable Design

Allows for compact inventory

### E-Z Switch Rod

Allows removal of float switch without disassembling basin lid, or handling pump or plumbing. Additional clip for secondary float included; float sold separately.

### Available With Alarm, Optional

## ORDERING INFORMATION

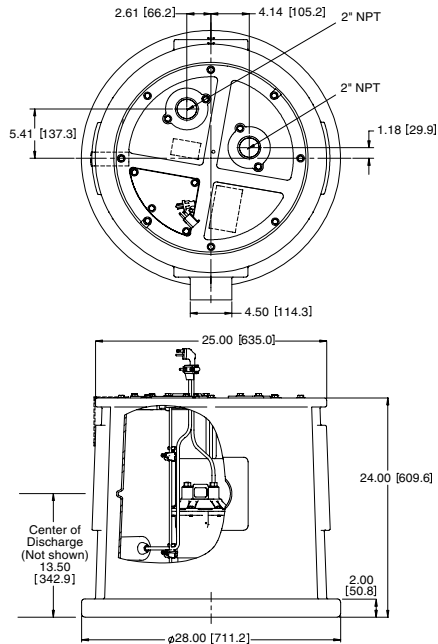
Catalog Number	HP	Volts	Phase/Cycles	Amps	Discharge Size	Switch Type	Cord Length
MW-BP	1/2	115	1/60	9	2"	Tethered Automatic*	20'
MW-BP-SA1**	1/2	230	1/60	4.5	2"	Tethered Automatic*	20'

\*Piggyback

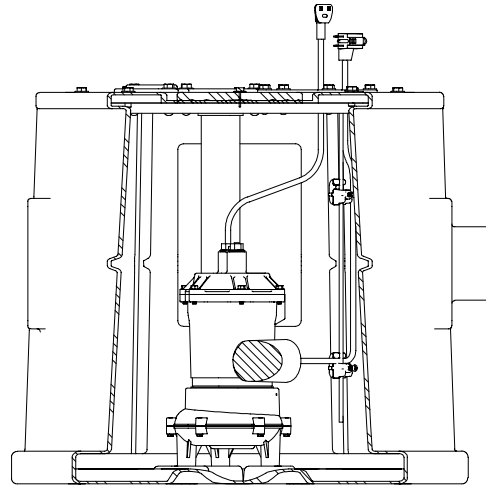
\*\*Includes SA-1 alarm.

# MYERS® MW-BP

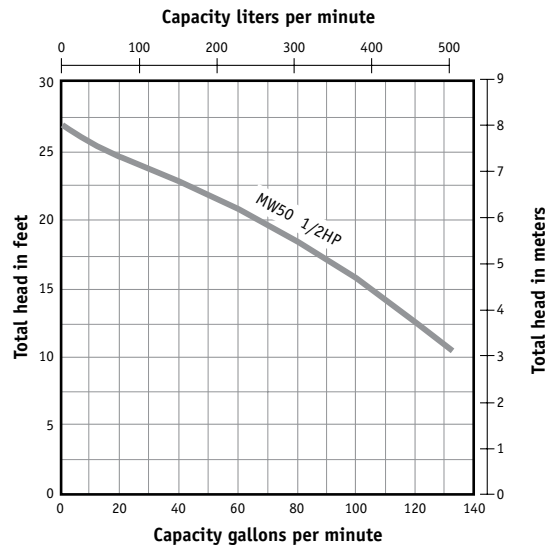
## DIMENSIONS



## SECTIONAL VIEW



## PUMP PERFORMANCE



USA  
293 WRIGHT STREET, DELAVAN, WI 53115 WWW.FEMYERS.COM  
PH: 888-987-8677 ORDERS FAX: 800-426-9446

CANADA  
490 PINEBUSH ROAD, UNIT 4, CAMBRIDGE, ONTARIO N1T 0A5  
PH: 800-363-7867 ORDERS FAX: 888-606-5484

Because we are continuously improving our products and services, Pentair reserves the right to change specifications without prior notice.