

MVP-S DM –OHIO

DCN: EIN-CP-OP-2095

Rev: 9.0

Date: 02/22/18

Orenco’s Most Versatile Panel (MVP) line of control panels includes an easy-to-use programmable logic unit that incorporates many timing and logic functions. This panel will accommodate timed dose or on-demand systems. The panel’s default mode of operation is timed dose. This document describes each mode of operation.

Alarm and Data Screens:

Alarm and data screens have been included with the panel to assist with panel monitoring and troubleshooting. The following alarm and data screens have been included in your panel, look for the √ to determine if the screen will be displayed for timed dosed or on-demand modes. Navigation between the screens is accomplished by using the up and down arrow keys. See “**Screen Navigation**” section for more details.

| Screen | Description | Timed | Demand | Data Type* |
|-----------------------|---|-------|--------|------------|
| Alarm Screens† | | | | |
| 1 | High level alarm | √ | √ | |
| 2 | Low level alarm | √ | √ | |
| Data Screens | | | | |
| 3 | Float status and timer mode (default screen, see fig 1) | √ | √ | |
| 4 | Pump cycles at top of screen and pump run time beneath | √ | √ | T |
| 5 | High level alarms at top of screen and low level alarms beneath | √ | √ | T |
| 6 | Override cycles at top of screen and timer float events beneath | √ | | T |
| 7 | Power faults at top of screen and hours in service beneath | √ | √ | T |
| 8 | Pump cycles at top of screen and pump run time beneath | √ | √ | R |
| 9 | High level alarms at top of screen and low level alarms beneath | √ | √ | R |
| 10 | Override cycles at top of screen and timer float events beneath | √ | | R |
| 11 | Power faults at top of screen and time since reset beneath | √ | √ | R |

† Alarm screens will only be displayed when alarms are active and include a date and time stamp of when the alarm started.

* Screens with “T” in the lower right corner have totalized values for the data. Screens with “R” in the lower right corner have resettable data and display the accumulated values since the last reset. To reset the accumulated values, hold the silence button on the panel for 10 seconds.

Float Status and Timer Mode Screen:

This default screen will display the condition of the floats and the operation mode of the panel. If the floats are lifted out of sequence, this screen will display “Float Error” while showing the float status.

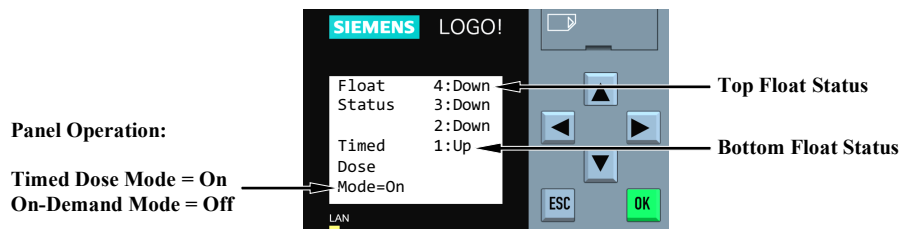


Figure 1. Float Status and Timer Mode Screen

Digital Input and Digital Output Screens:

The unit will activate various inputs and outputs as it operates (see Figure 2).

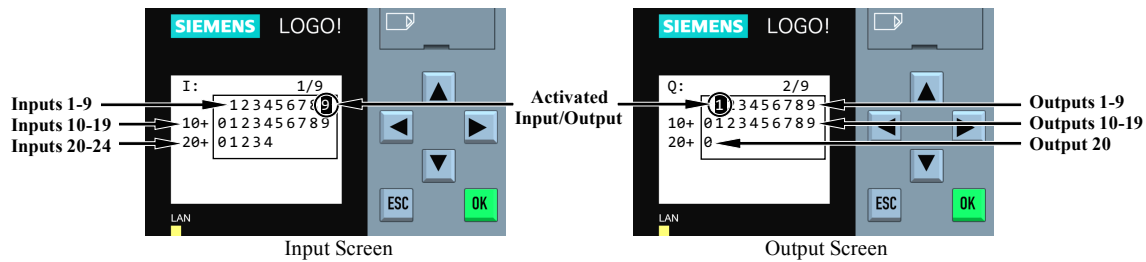


Figure 2. Input & Output Screens

Knowing what conditions cause the inputs and outputs to activate can be a helpful installation and troubleshooting tool. The input functions will vary based on the mode of operation of the panel. The following inputs and outputs have been used with your panel:

| # | Functions: | Activation Conditions: |
|--|---------------------------------------|--------------------------------|
| Inputs (Timed Dose Mode) | | |
| 1 | Redundant Off & Low Level Alarm Float | Float in up position |
| 2 | Timer On & Off Float | Float in up position |
| 3 | Override Timer On & Off Float | Float in up position |
| 4 | High Level Alarm Float | Float in up position |
| 5 | Push To Silence | Pushbutton is pressed |
| 6 | Alarm Test Switch (Optional) | Switch is activated |
| Alternate Inputs (On-Demand Mode) | | |
| 2 | Off Float | Float in up position |
| 3 | On Float | Float in up position |
| Outputs | | |
| 1 | Pump | Pump is called to run |
| 2 | Level Alarm Light | Level Alarm Light is activated |
| 3 | Audible Alarm | Audible Alarm is activated |
| 4 | General Alarm (Optional) | Alarm condition exists |

Screen Navigation:

The screens are arranged in the order shown in Figure 3 below. To move between screens, use the four arrow keys. The screens of interest are shown in bold. Additional built-in screens will be present, but do not contain useful information.

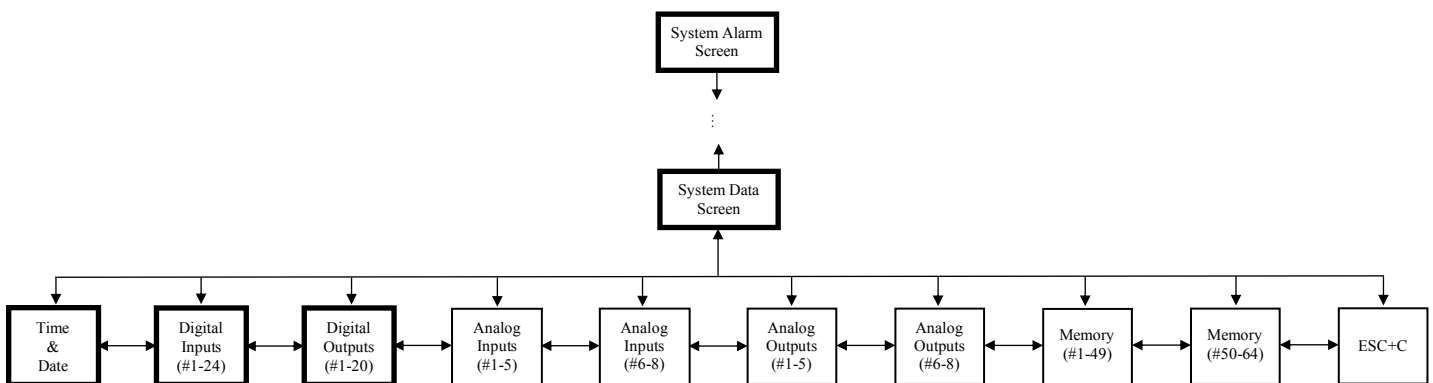


Figure 3. Screen Layout

Panel Operation:

This panel supports two different modes of operation based on selected parameter settings. See the “Setting Instructions” for this panel for information on how to change the mode of operation and other adjustable parameters. Float functions for both modes of operation are listed below. Depending on the number of floats for your application, some functions may be omitted or combined.

Timed Dose (Default Operation):

High Level Alarm: This float activates the alarm light (steady) and audible alarm when lifted for longer than the high level alarm delay. The audible alarm may be silenced by pressing the illuminated PUSH TO SILENCE button on the front of the control panel. The alarm light (steady) will remain on until the float is lowered, and the audible alarm will reactivate in 12 hours if condition is not corrected.

Override Timer On & Off: This float activates the override timer function when lifted for more than two seconds. This timer function controls the pump cycles during high flow conditions. The override timer function will remain active until the float has lowered and the override timer minimum run time is completed. When the override timer function has been completed, normal timer operation will resume.

Timer On & Off: This float activates the timer function when lifted. The timer will be activated while the float is up and will be deactivated a user-defined time (default 30 seconds) after the float is lowered. This timer function controls the pump cycles during normal flow conditions. Note: The timer will start with its off cycle.

Redundant Off & Low Level Alarm: This float turns off the pump when lowered for more than two seconds. This float is a secondary off float, which will operate if the Timer On & Off float fails. Pumping will be disabled in both the automatic and manual modes. This float also activates the alarm light (flashing) and audible alarm. The audible alarm may be silenced by pressing the illuminated PUSH TO SILENCE button on the front of the control panel. The alarm light will remain flashing until the float is lifted, and the audible alarm will reactivate in 12 hours if condition is not corrected.

On-Demand:

High Level Alarm: This float activates the alarm light (steady) and audible alarm when lifted for longer than the high level alarm delay. The audible alarm may be silenced by pressing the illuminated PUSH TO SILENCE button on the front of the control panel. The alarm light (steady) will remain on until the float is lowered, and the audible alarm will reactivate in 12 hours if condition is not corrected.

Pump On: This float activates the pump when lifted. The pump will run for the minimum run time or until the pump off float (if used) is lowered.

Pump Off: This float turns off the pump when lowered if the minimum run time has elapsed.

Redundant Off & Low Level Alarm: This float turns off the pump when lowered for more than 2 seconds. This float is a secondary off float, which will operate if the Pump Off float fails. Pumping will be disabled in both the automatic and manual modes. This float also activates the alarm light (flashing) and audible alarm. The audible alarm may be silenced by pressing the illuminated PUSH TO SILENCE button on the front of the control panel. The alarm light will remain flashing until the float is lifted. If the alarm condition is not corrected in 12 hours, the audible alarm will be reactivated.