

MVP-S DM -OHIO Setting Instructions

Orenco’s Most Versatile Panel (MVP) line of control panels includes an easy-to-use programmable logic unit that incorporates many timing and logic functions. This panel will accommodate timed dose or on-demand systems. The panel’s default mode of operation is timed dose. Some operational parameters may need changing for your particular application.

The unit uses block names to identify the various parameters (please refer to the Liquid Crystal Display screen shown in Step #3). The parameters for both modes of operation (Timed/Demand) will always be present, but only those that apply to the selected mode will be used. The following block types have been used with your control panel:

Block Names	Description	Factory Default	Time Range	Block Type	Timed/ Demand
HLA Dly	High Level Alarm Delay	5 seconds	MM:SS	Timer	Both
Off Time	Timer Off Time	60 minutes	MM:SS	Timer	Timed
On Time	Timer On Time	40 seconds	MM:SS	Timer	Timed
Ovr Off	Override Timer Off Time	30 minutes	MM:SS	Timer	Timed
Ovr On	Override Timer On Time	40 seconds	MM:SS	Timer	Timed
MinOvrTm	Minimum Override Time	90 minutes	MM:SS	Timer	Timed
TmOffDly	Timer Float Off Delay Time	30 seconds	MM:SS	Timer	Timed
MinRunT	Minimum Pump Run Time	30 seconds	MM:SS	Timer	Demand
TimeDose	Timed Dose Operation	ON	On/Off	Softkey	Both

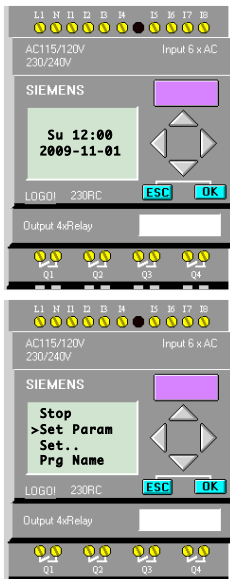
All adjustable parameters DO NOT use the same type of blocks; check the block types above to determine which steps apply to your application.

Changing Adjustable Parameter Blocks:

Step 1: Press ▼ repeatedly until the display does not change. To begin the configuration process, press the “ESC” key.

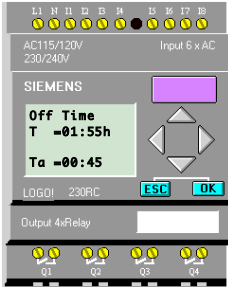
Step 2: Press ▼ on the unit to select “Set Param.” Then press the “OK” key.

Warning: Do not select “Stop.” Doing so may erase the panel programming, which can not be restored without the use of an EEPROM card, which is not included with the panel. If this is selected by accident, a confirmation screen will come up. Select “No” and press the “OK” key immediately.



Changing Adjustable Parameter Timer Blocks:

Timer blocks have three timebase units that can be used; s = seconds, m = minutes, h = hours. If an **h** appears after the timer setting then the time will be HH:MM (e.g. 01:55h = 1 hour and 55 minutes). If an **m** appears after the timer setting then the time will be MM:SS (e.g. 05:00m = 5 minutes and 0 seconds). If an **s** appears after the timer setting then the time will be SS.ss (e.g. 25:13s = 25.13 seconds).

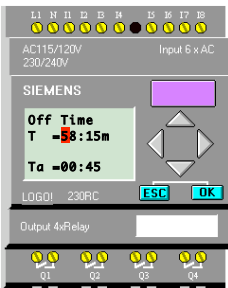


Step 3: Press **▲** or **▼** to view the parameter values. In this example, “Off Time” is being viewed.

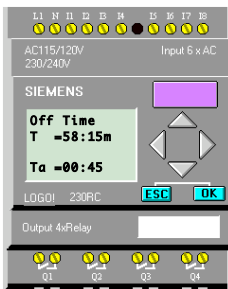


Step 4: The first line indicates the set value for the parameter. In this example, the set time is 1 hour and 55 minutes, “**T=01:55h.**” To change the set value for the parameter, press the “**OK**” key.

The second line indicates, in real time, how much time has elapsed for the cycle that is currently in process. The current value of the parameter is 45 minutes, “**Ta=00:45.**”



Step 5: The cursor will appear in the set value. To select the digit to be changed, press **◀** or **▶**. To change the value of a digit, press **▲** or **▼**. In this example, the set value has been changed from 1 hour and 55 minutes to 58 minutes and 15 seconds. (The timebase can be changed from hours = h to minutes = m or seconds = s by moving the cursor to the far right and pressing **▲** or **▼**).

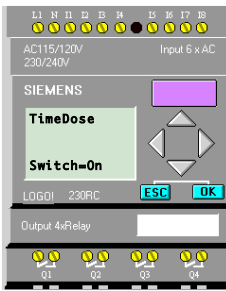


Step 6: When the desired time value has been entered, press the “**OK**” key. The new time value will now be in effect.

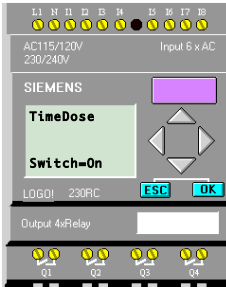


Step 7: To exit parameter mode, press the “**ESC**” key twice.

Changing Adjustable Parameter Softkey Blocks:



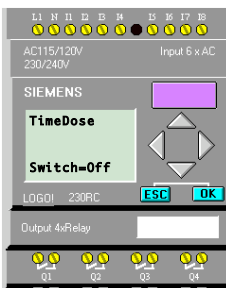
Step 3: Press ▲ or ▼ to view the parameter values. In this example, “TimeDose” is being viewed.



Step 4: The bottom line indicates the current state of the softkey switch. In this example, the softkey is set to “On”. To change the set value for the parameter, press the “OK”



Step 5: The cursor will appear on the switch parameter. To change the value of the softkey switch, press ▲ or ▼. In this example, the set value has been changed from “On” to “Off.”



Step 6: When the desired time value has been entered, press the “OK” key. The new value will now be in effect.



Step 7: To exit parameter mode, press the “ESC” key twice.