

MVP-S PS RO CV Setting Instructions



Oreco Systems
Incorporated
1-800-348-9843

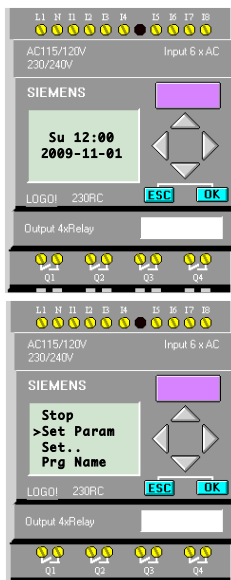
Oreco's Most Versatile Panel (MVP) line of control panels includes an easy-to-use programmable logic unit that incorporates many timing and logic functions. Some operational parameters may need changing for your particular application.

The unit uses block names to identify the various parameters (please refer to the Liquid Crystal Display screen shown in Step #3). The following block types have been used with your control panel:

Block Names	Description	Factory Default	Time Range	Block Type
PressDly	Pressure Switch Delay Off	5 seconds	MM:SS	Timer
MaxRunT	Maximum Pump Run Time	60 minutes	MM:SS	Timer
AlarmDis	Audible Alarm Disable	ON	On/Off	Softkey
TimeClk1	Pump Time Cam 1	D = MTWTFSS	7 Day	Clock
		On = 00:00	24 Hour	
		Off = 00:00	24 Hour	
	Pump Time Cam 2	D = MTWTFSS	7 Day	
		On = 00:00	24 Hour	
		Off = 00:00	24 Hour	
	Pump Time Cam 3	D = MTWTFSS	7 Day	
		On = 00:00	24 Hour	
		Off = 00:00	24 Hour	
	Pulse On/Off 4	Not Used		

All adjustable parameters DO NOT use the same type of blocks; check the block types above to determine which steps apply to your application.

Changing Adjustable Parameter Blocks:



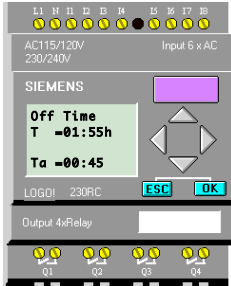
Step 1: Press ▼ repeatedly until the display does not change. To begin the configuration process, press the “ESC” key.

Step 2: Press ▼ on the unit to select “Set Param.” Then press the “OK” key.

Warning: Do not select “Stop.” Doing so may erase the panel programming, which can not be restored without the use of an EEPROM card, which is not included with the panel. If this is selected by accident, a confirmation screen will come up. Select “No” and press the “OK” key immediately.

Changing Adjustable Parameter Timer Blocks:

Timer blocks have three timebase units that can be used; s = seconds, m = minutes, h = hours. If an **h** appears after the timer setting then the time will be HH:MM (e.g. 01:55h = 1 hour and 55 minutes). If an **m** appears after the timer setting then the time will be MM:SS (e.g. 05:00m = 5 minutes and 0 seconds). If an **s** appears after the timer setting then the time will be SS.ss (e.g. 25:13s = 25.13 seconds).



Step 3: Press **▲** or **▼** to view the parameter values. In this example, “**Off Time**” is being viewed.



Step 4: The first line indicates the set value for the parameter. In this example, the set time is 1 hour and 55 minutes, “**T=01:55h.**” To change the set value for the parameter, press the “**OK**” key.

The second line indicates, in real time, how much time has elapsed for the cycle that is currently in process. The current value of the parameter is 45 minutes, “**Ta=00:45.**”



Step 5: The cursor will appear in the set value. To select the digit to be changed, press **◀** or **▶**. To change the value of a digit, press **▲** or **▼**. In this example, the set value has been changed from 1 hour and 55 minutes to 58 minutes and 15 seconds. (The timebase can be changed from hours = h to minutes = m or seconds = s by moving the cursor to the far right and pressing **▲** or **▼**).



Step 6: When the desired time value has been entered, press the “**OK**” key. The new time value will now be in effect.



Step 7: To exit parameter mode, press the “**ESC**” key twice.

Changing Adjustable Parameter Softkey Blocks:



Step 3: Press ▲ or ▼ to view the parameter values. In this example, “**Vacation**” is being viewed. Factory default is set to “**Off**”, time clocks 1 thru 4 will be used. When “**Vacation**” is set to “**On**”, time clocks 5 thru 8 will be used. This will allow you to use to different sets of adjustable time clocks containing different clock schedules.



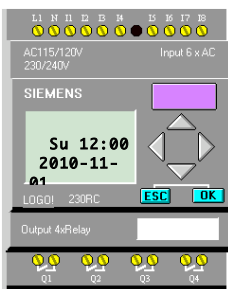
Step 4: The bottom line indicates the current state of the softkey switch. In this example, the softkey is set to “**Off**”. To change the set value for the parameter, press the “**OK**”



Step 5: The cursor will appear on the switch parameter. To change the value of the softkey switch, press ▲ or ▼. In this example, the set value has been changed from “**Off**” to “**On**.”



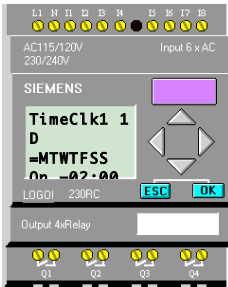
Step 6: When the desired time value has been entered, press the “**OK**” key. The new value will now be in effect.



Step 7: To exit parameter mode, press the “**ESC**” key twice.

Changing Adjustable Parameter Clock Blocks:

Clock blocks have four screens, three of the screens have three adjustable lines - the day-of-week selection, the On time, and Off time and the 4th screen is not used. The day-of-week selection allows for the system dose to be restricted to certain days of the week; replacing the day of the week from the MTWTFSS line with a " - " removes that day from the scheduled cycle. The "On" time is when the system initiates a dose; the "Off" time must be set for at least 1 minute past the "On" time. See the following to learn how to manipulate the keys to adjust your system.



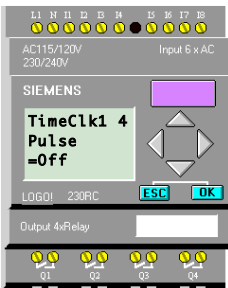
Step 1: Press **▲** or **▼** to view the parameter values. In this example, “**TimeClk1 1**” is being viewed.



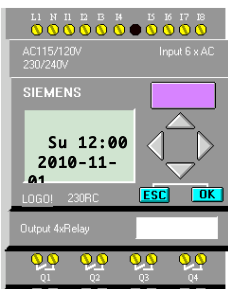
Step 2: The first line indicates the days of the week that the system will initiate activity. In this example, all the days of the week have been selected. The second line indicates when (during a 24-hour time clock day) the system will initiate activity during the day. The current value is, “**On =02:00**”, which is 2AM. The third line shows the off time, “**Off =03:00**”, this should always be set to at least 1 minute past the "On" time. To change any parameters press the “**OK**” key.



Step 3: The cursor will appear in the set value. Using the **◀** or **▶** keys will allow you to move through the parameters on all three rows to be changed. To remove the day of the week from the schedule, press the **▼** key to delete it. (a "-" will be shown in its place). To select a time to be changed, press **◀** or **▶**. To change the value of the digit, press **▲** or **▼** until the digit you require is shown. When the desired time/day values have been entered, press the “**OK**” key. The new time value will now be in effect.



Step 4: Move between the other timeclock screens by pressing **▼** or **▲** and repeating steps 2 through 3 above. When the 4th timeclock screen appears **DO NOT** change the value. Instead use **▼** or **▲** to move between the other parameter screens.



Step 5: To exit parameter mode, press the “**ESC**” key twice.