

**Model: PFSPTM4**



**Self-Priming Centrifugal,  
Frame Mounted,  
Solids Handling Pumps  
Universal Drive  
3" Solids**

- IMPELLER SIZES:**  
Standard Impeller will be supplied unless otherwise noted.
- 9.75" Dia. - Standard
  - 9.50" Dia.
  - 9.25" Dia.
  - 9.00" Dia.
  - 8.75" Dia.
  - 8.50" Dia.

**Features:**

Self-priming centrifugal, solids handling, frame mounted pumps designed for Industrial and Municipal applications.

- **SUCTION/DISCHARGE:** 4" x 4", ASA 125lb Spool Flanges included
- **LIQUID TEMPERATURE:** 160°F
- **CASING:** Cast Iron ASTM A-48 Class 30, Maximum Operating pressure 87 psi
- **IMPELLER:** 2 Vane semi-open type. Ductil Iron, Handles 3" diameter spherical solids
- **SHAFT:** 420 Stainless Steel
- **SHAFT SLEEVE:** 316 Stainless Steel
- **COVER PLATE:** Gray Iron ASTM A-48, Class 30, Removable, Adjustable, Weight 37 lbs.
- **WEAR PLATE:** Replaceable, Steel
- **BEARING HOUSING:** Gray Iron ASTM A-48, Class 30
- **SEAL PLATE:** Gray Iron ASTM A-48, Class 30
- **PAINT:** Air dry enamel
- **BEARING-DRIVE END:** Open, Double Row, Ball, thrust load
- **BEARING-PUMP END:** Open, Single Row, Ball, radial load
- **LUBRICATION:** Bearing - SAE No. 30 non detergent oil, pump includes oil level sight gauge
- **SEAL:** Cartridge Type, mechanical, oil lubricated. Tungsten carbide rotating and stationary faces, Viton elastomers (Dupont Viton® or equivalent). 316 Stainless steel cage and spring
- **CHECK VALVE:** Neoprene Flap type with steel weights
- **GASKET:** Buna-N, compressed synthetic fibers, PTFE, vegetable fiber, cork and rubber
- **O-RINGS:** Buna-N
- **HARDWARE:** Standard plated Steel
- **PRESSURE RELIEF VALVE:** Brass
- **OPTIONAL EQUIPMENT:** Flexible coupled assy, with base OSHA guard and electric motor.
- **WARRANTY:** 1 year
- **WEIGHT:** 644 lbs

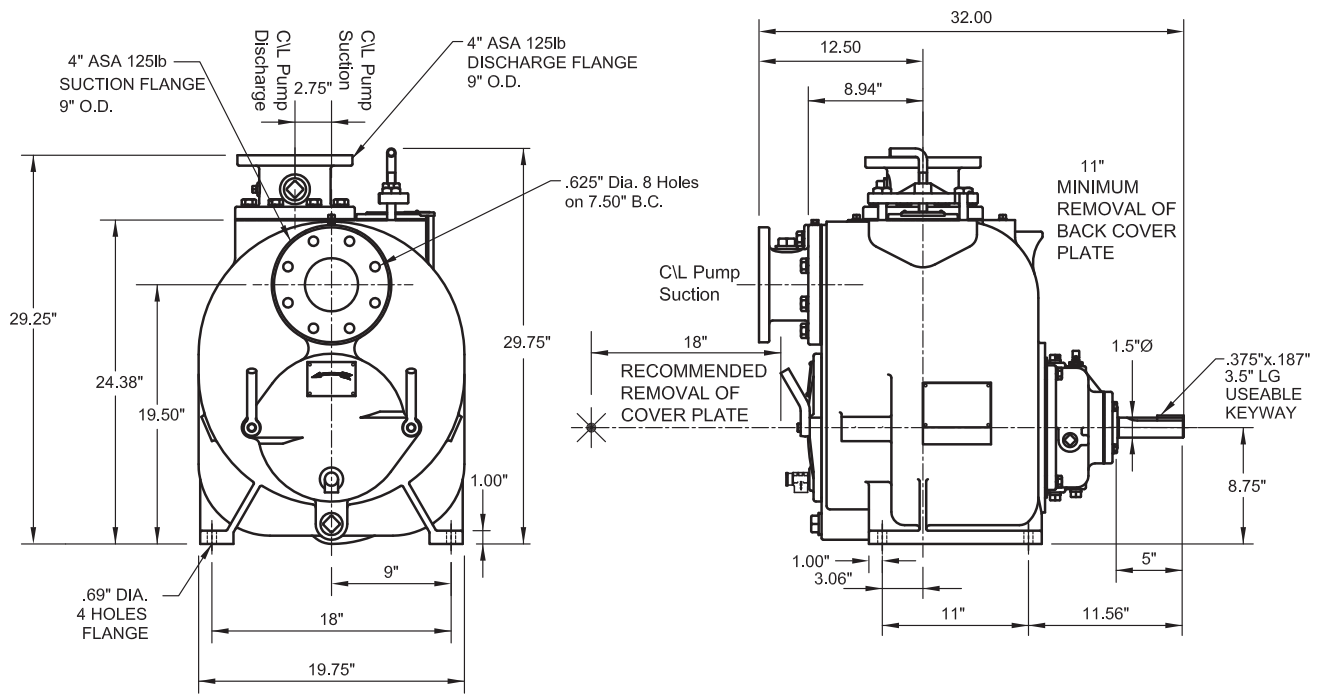


**WARNING:** CANCER AND REPRODUCTIVE HARM-  
[WWW.P65WARNINGS.CA.GOV](http://WWW.P65WARNINGS.CA.GOV)

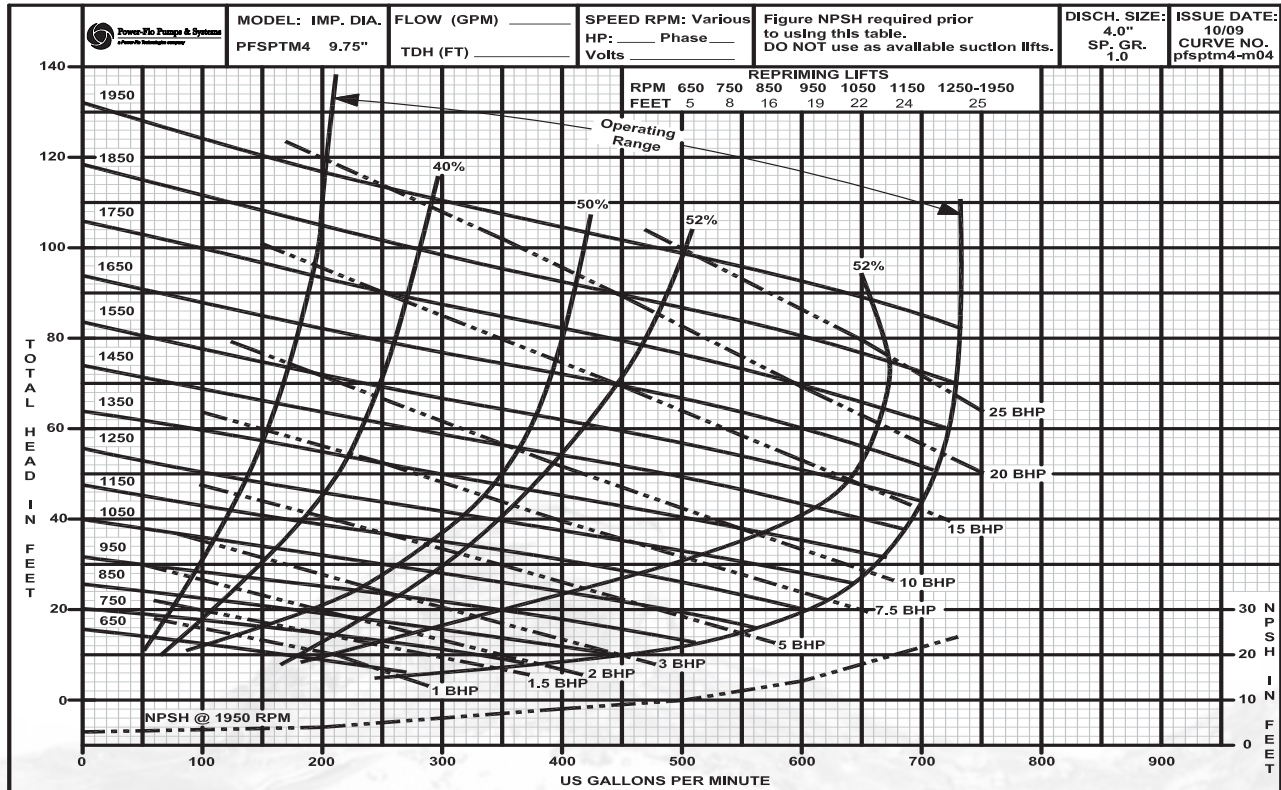
**WARNING ! - DO NOT** use in explosive atmosphere or for pumping volatile flammable liquids.



**Model: PFSPTM4**  
**9.75" Dia. Standard Imp. at Various RPM**



**9.75" Dia. Standard Imp. at Various RPM**



**Self-Priming Centrifugal Pumps - PFSPTM4 - 4" x 4"**



**Power-Flo Pumps & Systems**

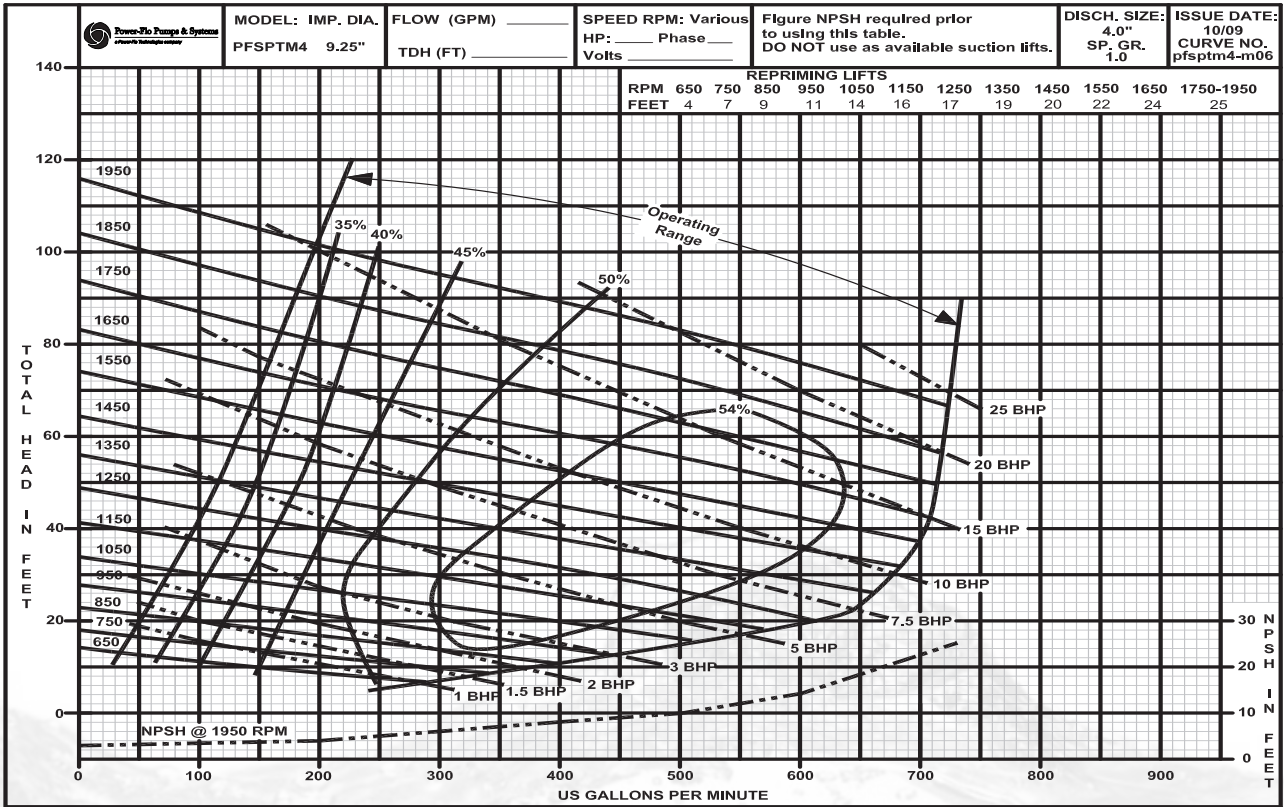
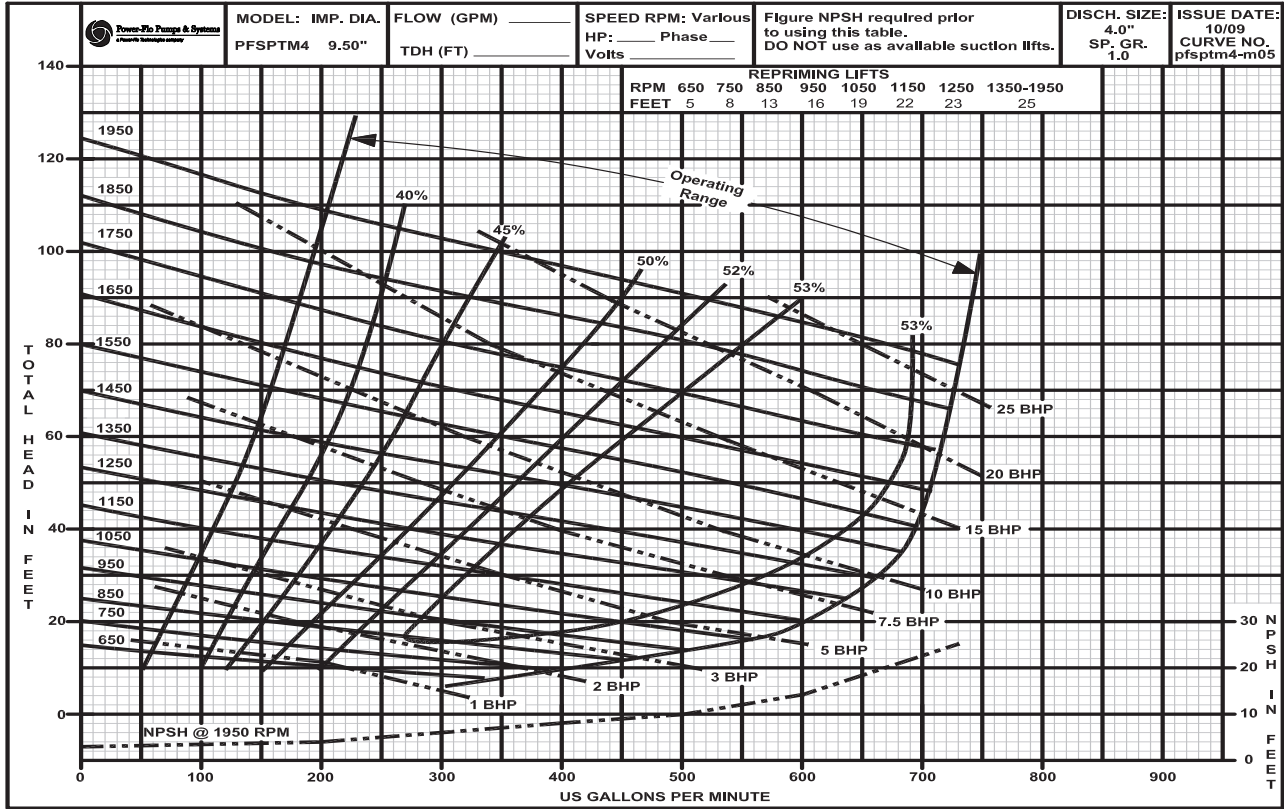
a Power-Flo Technologies company

877-24PUMPS • fax: 516-812-6897 • www.powerflo pumps.com

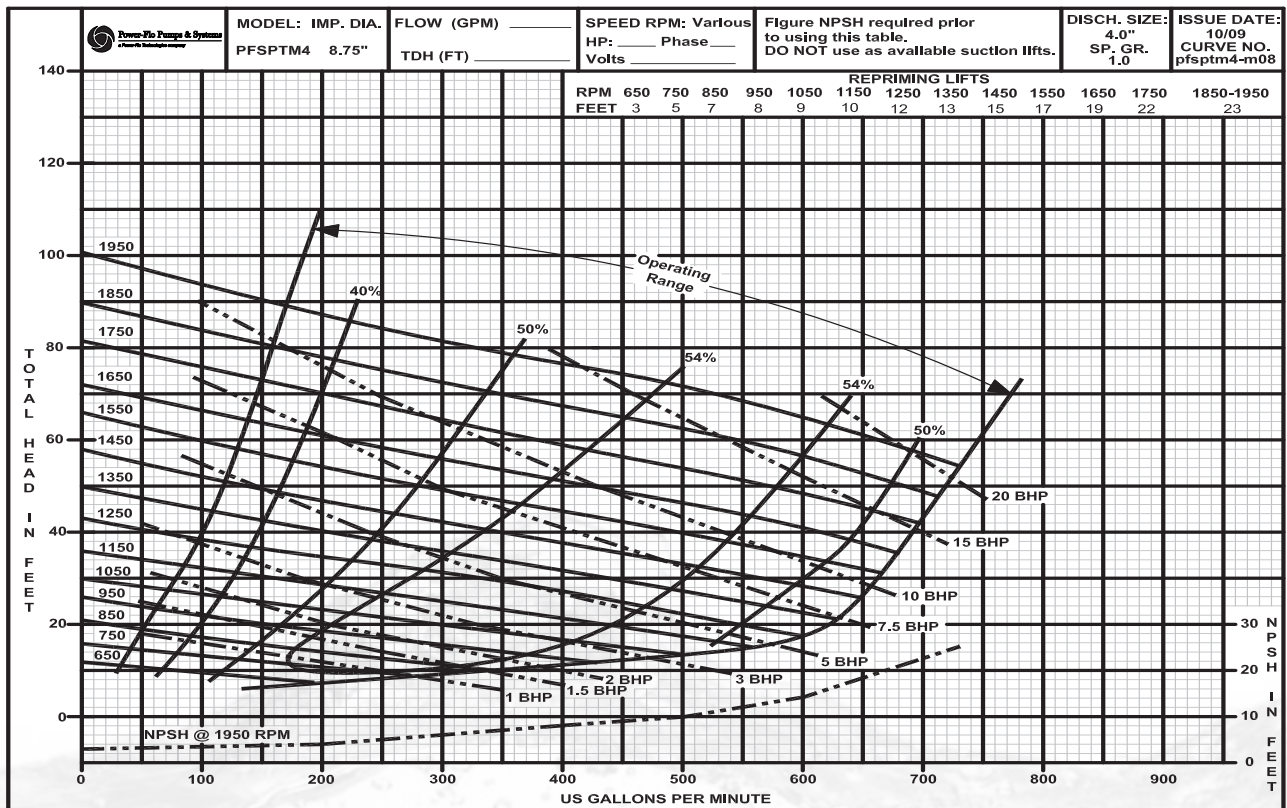
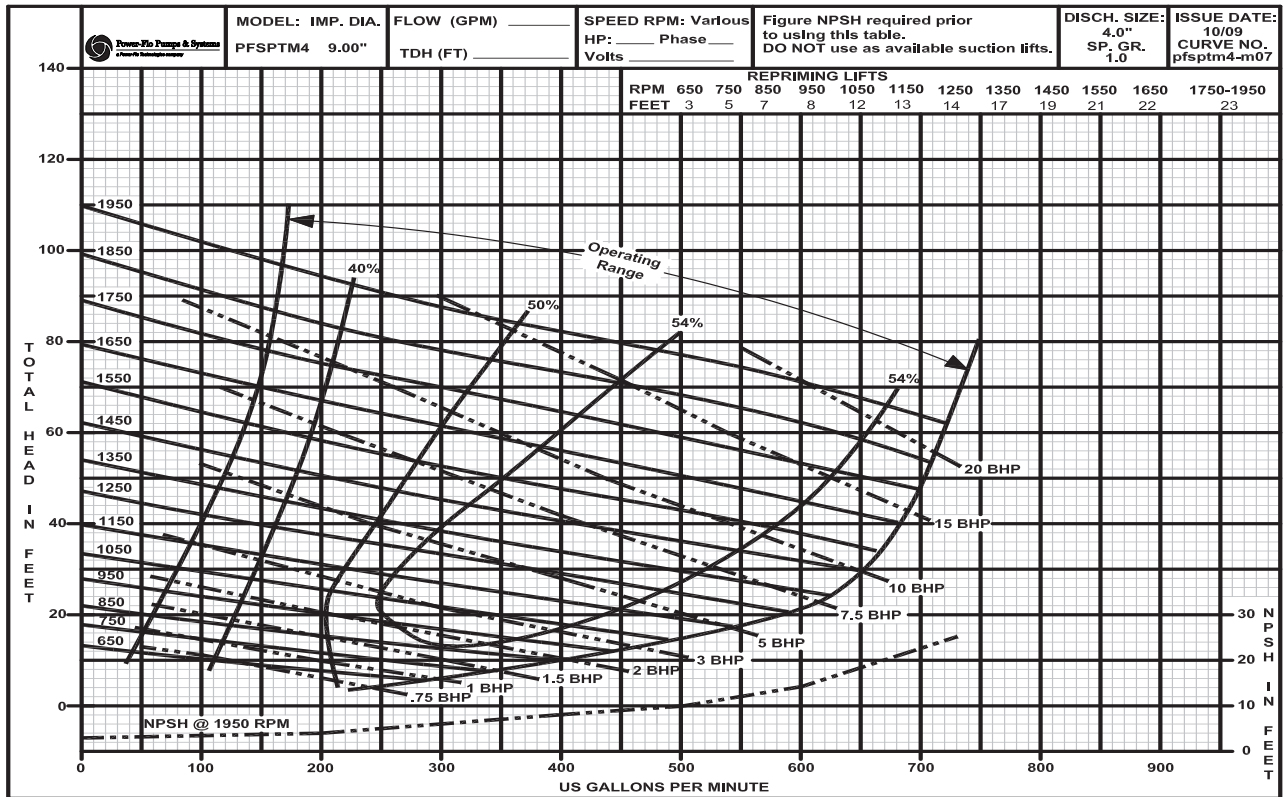
Sect. SP  
 Page 47  
 Rev. 02/2021

**Model: PFSPTM4**  
**9.50" Dia. Imp. & 9.25" Dia. at Various RPM**

**Self-Priming Centrifugal Pumps - PFSPTM4 - 4" x 4"**



**Model: PFSPTM4**  
**9.00" & 8.75" Dia. Imp. at Various RPM**



**Self-Priming Centrifugal Pumps - PFSPTM4 - 4" x 4"**



**Power-Flo Pumps & Systems**

a Power-Flo Technologies company

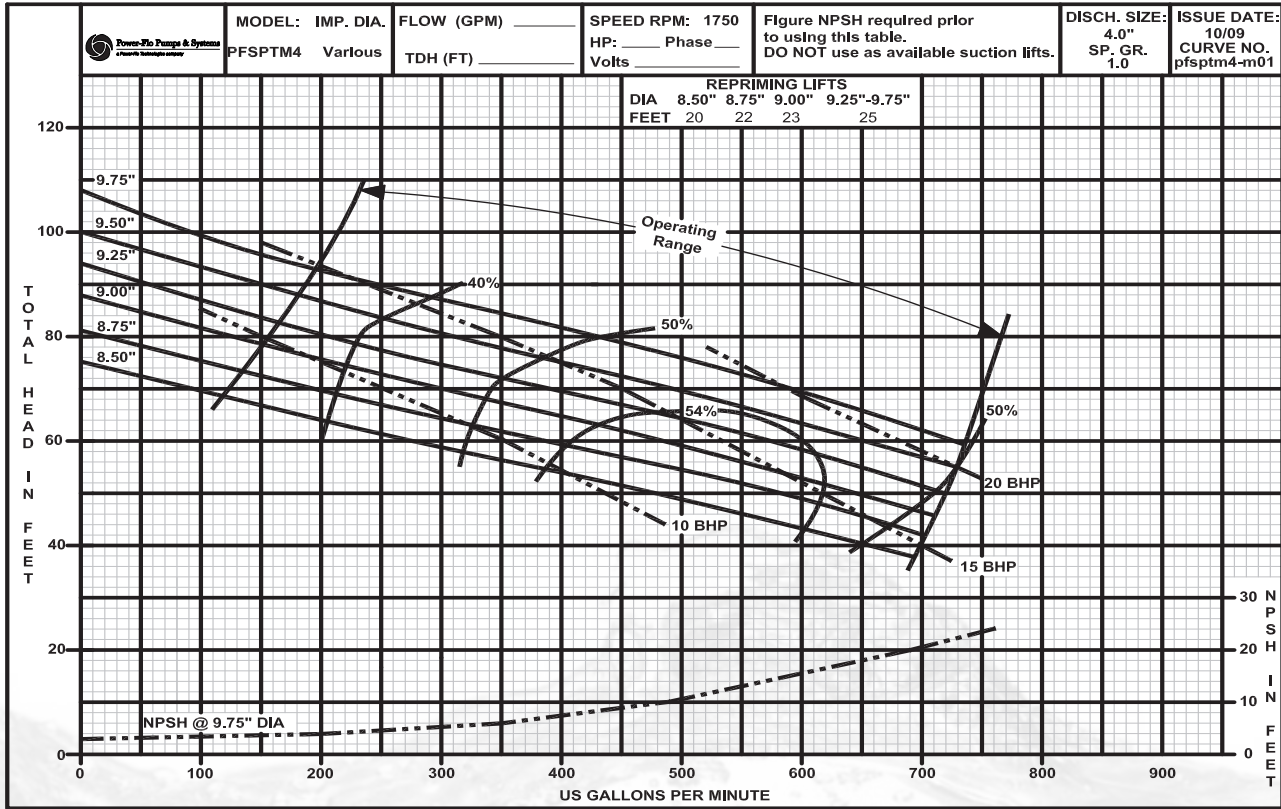
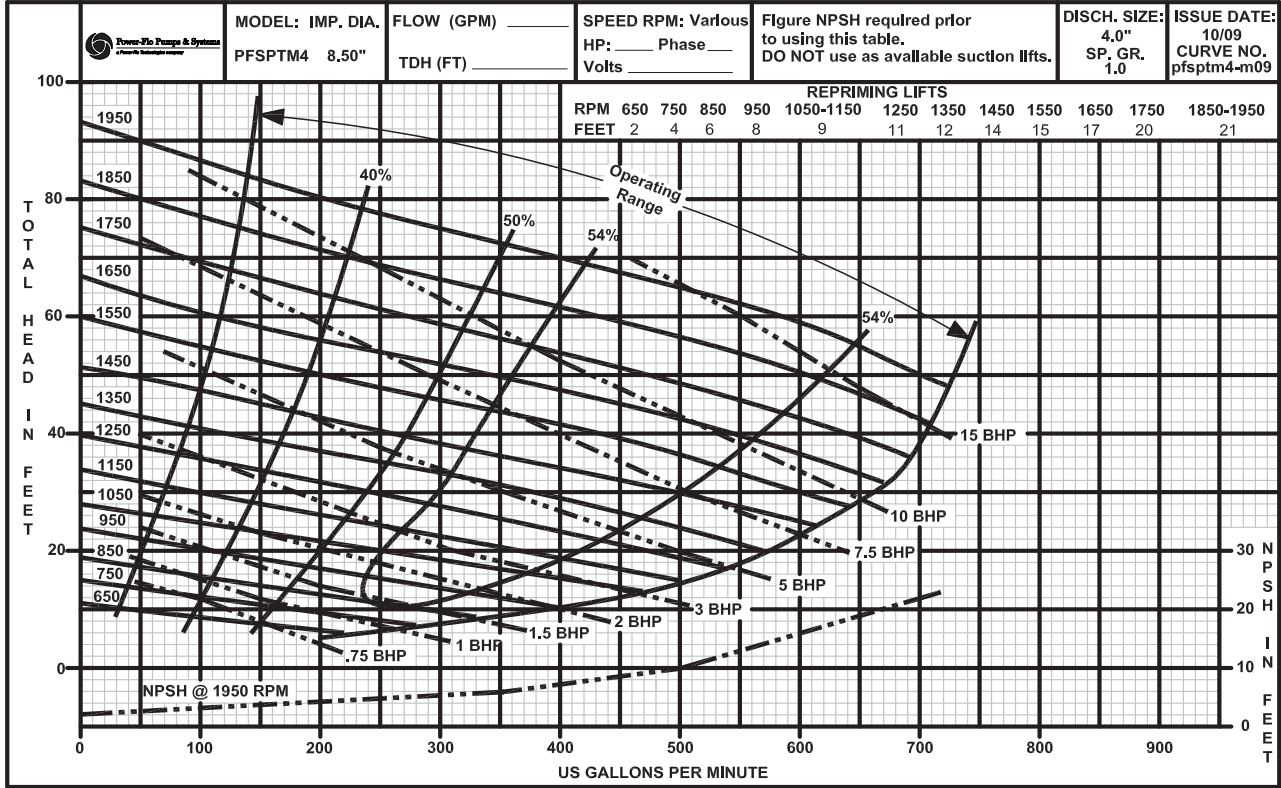
877-24PUMPS • fax: 516-812-6897 • www.powerflo pumps.com

Sect. SP  
 Page 49  
 Rev. 02/2021

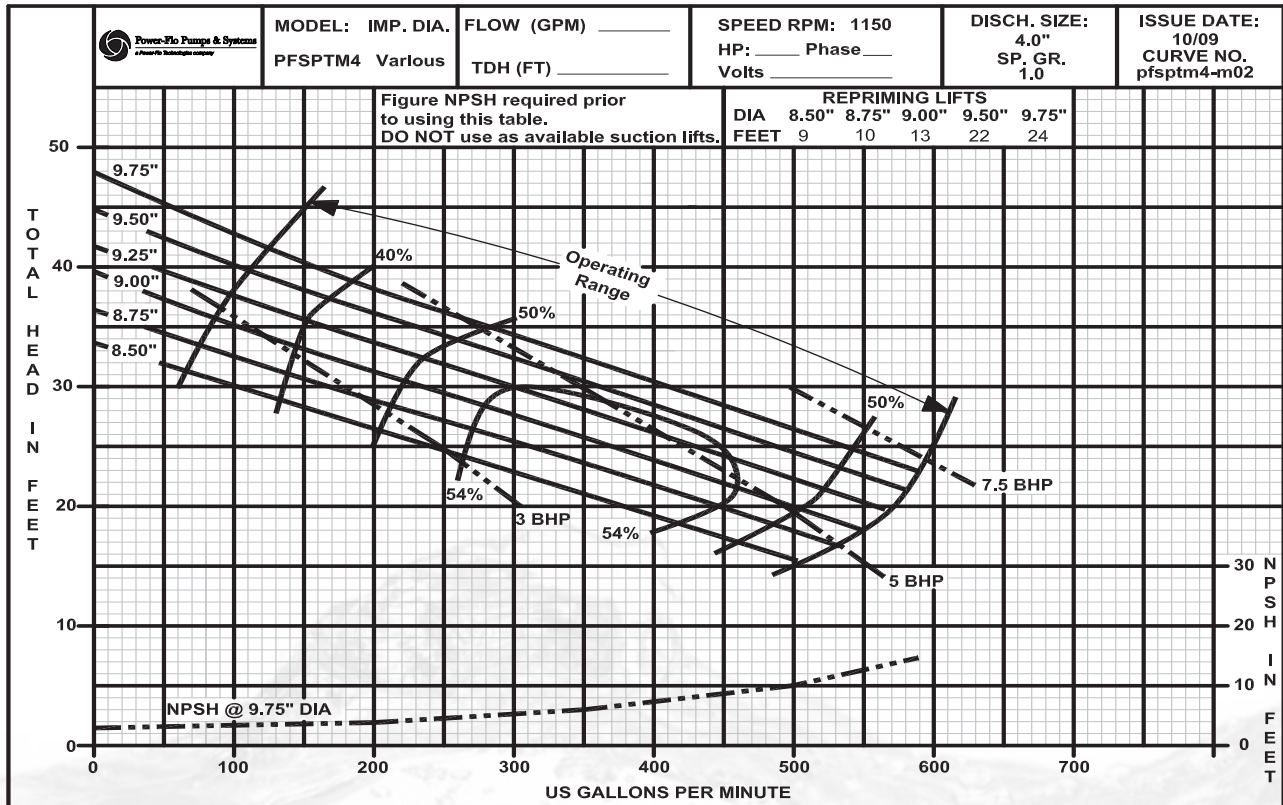
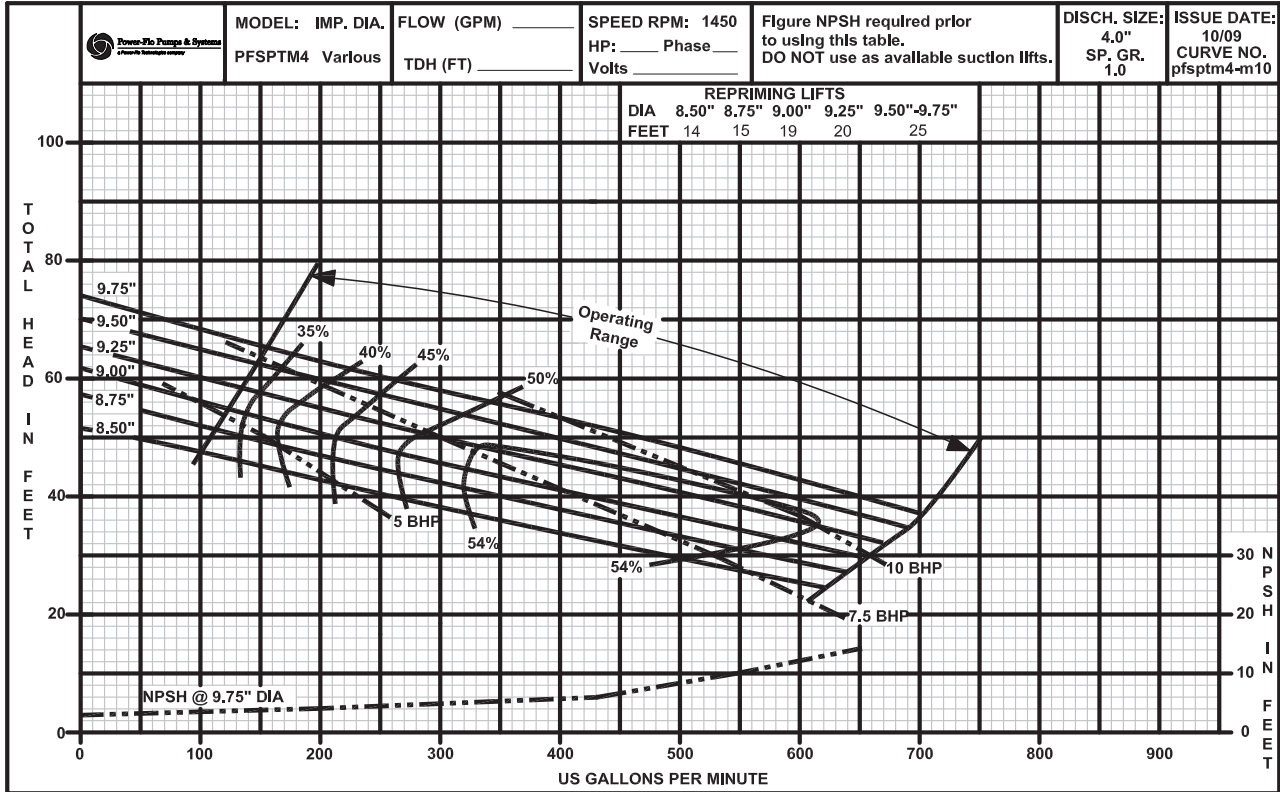
Model: PFSPTM4

8.50" Dia. Imp. at Various RPM & Various Impellers at 1750RPM

Self-Priming Centrifugal Pumps - PFSPTM4 - 4" x 4"



**Model: PFSPTM4**  
**Various Impeller Dia, 1450RPM & 1150RPM**



**Self-Priming Centrifugal Pumps - PFSPTM4 - 4" x 4"**



**Power-Flo Pumps & Systems**

a Power-Flo Technologies company

877-24PUMPS • fax: 516-812-6897 • www.powerflo pumps.com

Sect.  
SP  
Page  
51  
Rev.  
02/2021

**Model: PFSPTM4**  
**Various Impeller Dia, 950RPM & 860RPM**

**Self-Priming Centrifugal Pumps - PFSPTM4 - 4" x 4"**

