

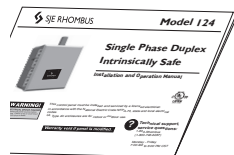


## Single Phase Duplex Intrinsically Safe

### Installation and Operation Manual



#### Parts Included



x3  
or  
x4

Control panel may be  
ordered with or  
without these items.



### WARNING!



#### ELECTRICAL SHOCK HAZARD

Disconnect all power sources before servicing. Failure to do so could result in serious injury or death.

**Warranty void if panel is modified.**

This control panel must be installed and serviced by a licensed electrician in accordance with the National Electric Code NFPA-70, state and local electrical codes. UL Type 4X enclosures are for indoor or outdoor use.

When installed according to these instructions and Article 504 of the National Electrical Code (NFPA 70) this control panel provides intrinsically safe sensing circuits for interface with Class 1, Division 1, Groups C and D hazardous locations. Intrinsically safe wiring must be in accordance with the enclosed control drawing of the specific intrinsically safe relay manufacturer.



For information regarding operation, available options, or servicing questions, please call an SJE Rhombus customer service technician:

1-800-Rhombus (1-800-746-6287)  
Monday-Friday, 7:00 AM to 6:00 PM Central Time

SJE Rhombus offers a five-year limited warranty.

For complete terms and conditions, please visit [www.sjerrhombus.com](http://www.sjerrhombus.com).

Products returned must be cleaned, sanitized, or decontaminated as necessary prior to shipment to ensure that employees will not be exposed to health hazards in handling said material. All applicable laws and regulations shall apply.

Manufactured by: SJE Rhombus  
22650 County Highway 6  
Detroit Lakes, MN 56501 USA

Toll free: 1-888-DIAL SJE  
(1-888-342-5753)  
Phone: 218-847-1317  
Fax: 218-847-4617

Email: [customer.service@sjerinc.com](mailto:customer.service@sjerinc.com)  
Website: [www.sjerrhombus.com](http://www.sjerrhombus.com)

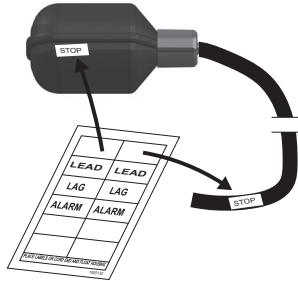
## Installing the Float Switches

The Model 124 Single Phase Duplex control panel operates with float switches. They activate pump STOP, LEAD pump START, LAG pump START and high-level ALARM functions.

### 1 **⚠ WARNING!**

Ensure all power is turned OFF before installing floats in tank. Failure to do so could result in serious or fatal shock.

### 2 Label each float and cord end with the provided pairs of STOP, LEAD, LAG, and ALARM stickers.



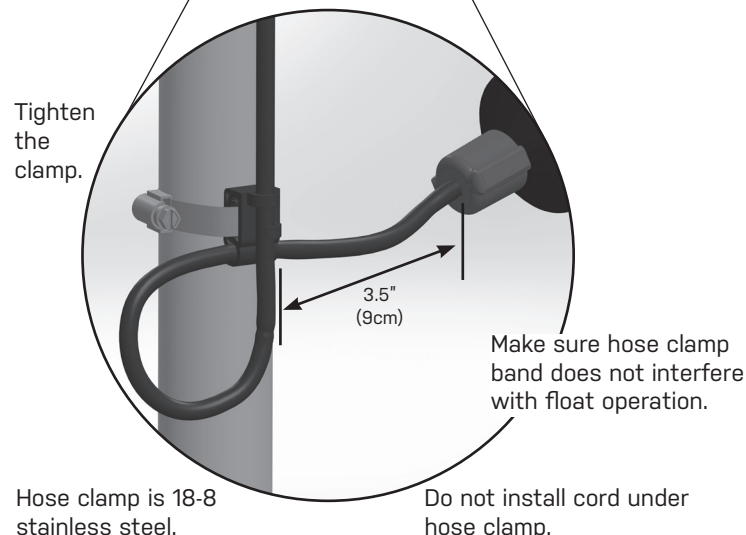
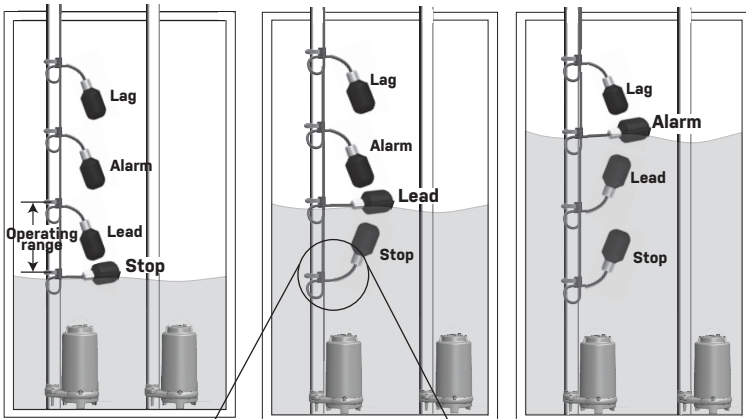
### 3 **⚠ CAUTION!**

If the floats are not properly mounted and connected in the correct order, the pumps will not function properly.

Floats require free range of motion.

They must not touch each other or any equipment in the pump chamber.

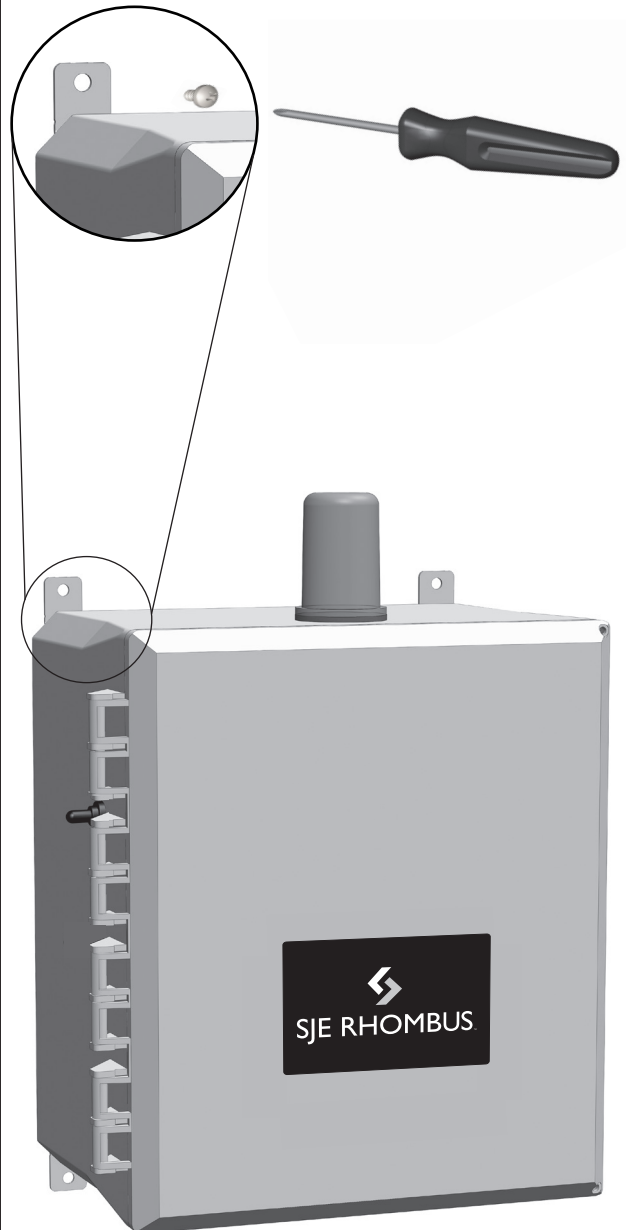
Pipe Clamp Mounting



## Mounting the Control Panel

### **NOTE**

If the distance to the control panel exceeds the length of the float switch cords or the pump power cord, splicing in a liquid-tight junction box will be required. For outdoor or wet installation, we recommend an SJE Rhombus UL Type 4X junction box.



## Wiring the Control Panel

- 1 Determine conduit entrance locations on control panel as shown. Check local codes and schematic on the inside cover of the panel for the number of power circuits required.

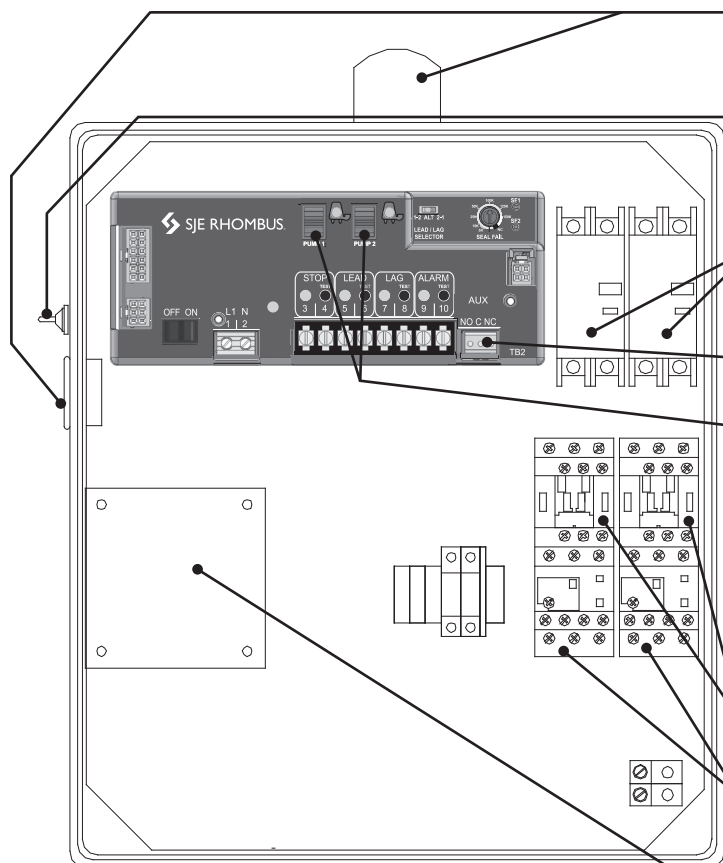
### ⚠ CAUTION!

Be sure the pump power voltage and phase are the same as the pump motor being installed.

- 2 Connect the following wires to the proper terminal positions:

- incoming power
- pump 1
- pump 2
- float switches

See schematic on inside cover of the control panel for details.



Typical Layout (May vary with options ordered).

### ⚠ CAUTION!

You must use conduit sealant to prevent moisture or gases from entering the panel.

Type 4X conduit must be used to maintain a Type 4X rating of the control panel.

- 3 Verify correct operation of control panel after installation is complete.

## Operation

SJE Rhombus Model 124 Single Phase Duplex control panel operates with float switches. When all floats are in the open or OFF position, the panel is inactive. As the liquid level rises and closes the STOP float, the panel remains inactive until the LEAD float closes. At this point the LEAD pump will turn ON (if the Hand-Off-Auto switch is in the AUTO mode and the power is ON). The pump will remain ON until both the STOP and LEAD floats return to their OFF positions. If the liquid level rises beyond both the STOP and LEAD floats to reach the LAG float, the lag pump will turn ON (if the Hand-Off-Auto switch is in the AUTO mode and the power is ON). Both pumps will remain ON until the STOP, LEAD, and LAG floats return to their OFF positions. If the liquid level rises to reach the ALARM float, the alarm will be activated.

### Alarm System (Indicator Light and Horn)

When an alarm condition occurs, the red light and horn will be activated.

If the **TEST/NORMAL/SILENCE** switch is moved to the SILENCE position and released, the horn will be silenced. When the alarm condition is cleared, the alarm system is reset.

### Circuit Breakers (optional)

Circuit Breakers provide pump disconnect and branch circuit protection.

### Auxiliary Contact

Form C - Can be wired normally open or normally closed.

### Hand-Off-Auto (HOA) Switches

The HOA 3-way switches control pump functions.



In HAND mode, the pump will turn ON.



OFF turns the pump OFF.



In AUTO mode, commands from the float switches turn each pump ON and OFF.

### Motor Contactors

Motor contactors control pumps by switching electrical lines.

### Adjustable Overloads (optional)

Adjustable overloads provide thermal overload protection for pump.

### Intrinsically Safe Module

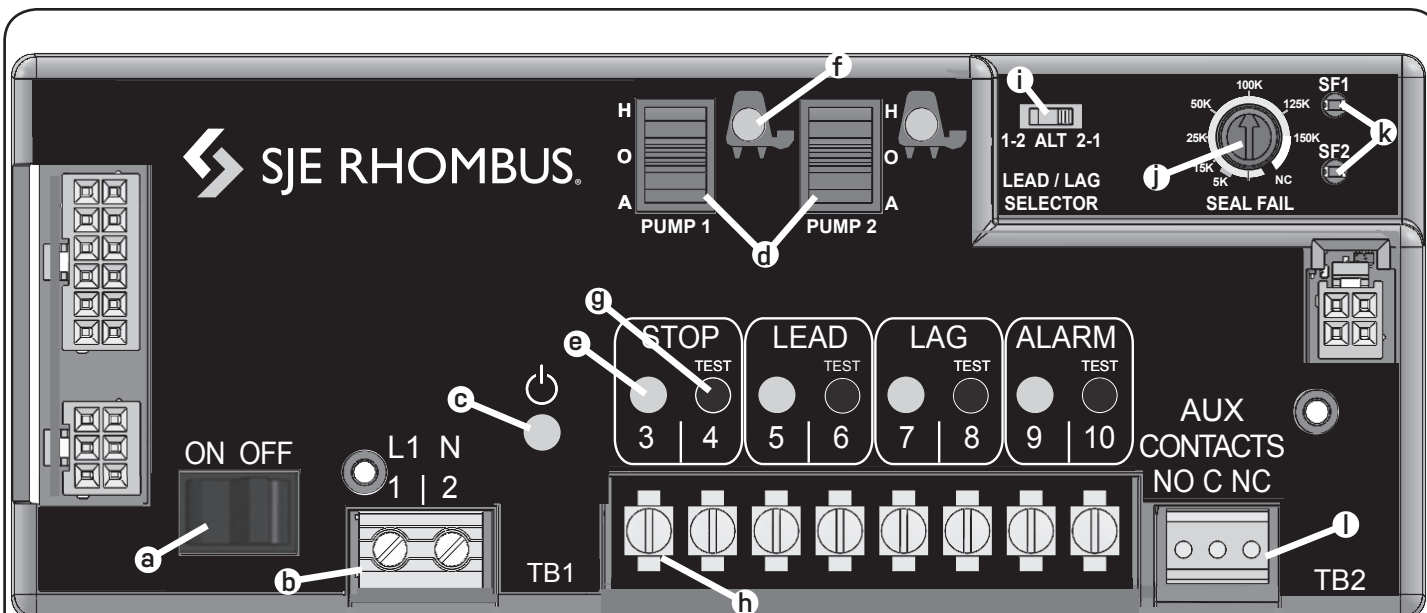
The intrinsically safe module limits the amount of energy to switches preventing ignition of flammable gases.



### Technical support, service questions:

1-800-Rhombus  
(1-800-746-6287)

Monday - Friday  
7:00 AM to 6:00 PM Central Time



Model shown contains optional Seal Fail circuitry.

## COMPONENTS

- a. ON/OFF Switch - Control/Alarm Power
- b. 120V Incoming Power Terminals
- c. Power LED - (Green)
- d. Pump HOA Switches
- e. Float LEDs - (Red) x4
- f. Pump LEDs x2  
Pump Run - (Green)  
Pump Fail - (Red)
- g. Simulate Float Buttons x4
- h. Float Terminals x8
- i. Lead/Lag Selector Switch
- j. Dual Seal Fail Pot - (Optional)
- k. Dual Seal Fail LEDs - (Red) - (Optional)
- l. Auxiliary Alarm Terminals

## PROGRAMMING INSTRUCTIONS

WITH POWER ON, HOA's OFF, FLOATS OFF OR DISCONNECTED, PRESS DESIRED FLOAT BUTTON RAPIDLY 4 TIMES AND HOLD

\*\*PUMP LEDs WILL FLASH UPON SUCCESSFUL PROGRAMMING\*\*

| OPTIONS            | FLOAT BUTTON | DEFAULT | OPERATION   |
|--------------------|--------------|---------|---|
| PUMP FAIL ALARM    | STOP         | ON      | ACTIVATES IF A PUMP CAUSES "LAG" 3 CYCLES IN A ROW  |
| MANUAL ALARM RESET | LEAD         | OFF     | LATCHES HIGH ALARM: CLEAR WITH EXTERNAL TEST SWITCH |
| SEAL FAIL HORN     | LAG          | OFF     | ACTIVATES HORN UPON SEAL FAIL                       |
| ALARM FLASHER      | ALARM        | OFF     | FLASHES BEACON UPON HIGH ALARM                      |

## ALARM CONDITIONS

| ALARM      | BEACON   | CONTROLLER LED    | HORN |
|------------|----------|-------------------|------|
| PUMP FAIL  | FLASHING | RED PUMP LIGHT    | NO   |
| SEAL FAIL  | FLASHING | SF1, SF2          | PROG |
| FLOAT FAIL | FLASHING | BAD FLOAT NOT LIT | NO   |
| HIGH ALARM | SOLID    | ALARM FLOAT       | YES  |



22650 County Highway 6 ■ Detroit Lakes, Minnesota 56501 USA