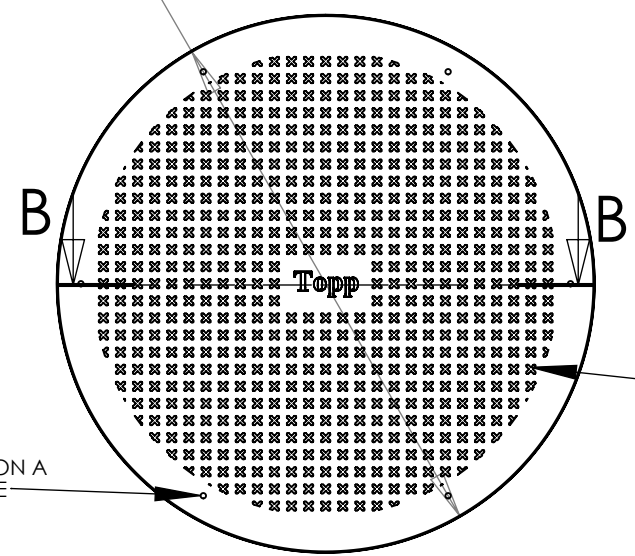
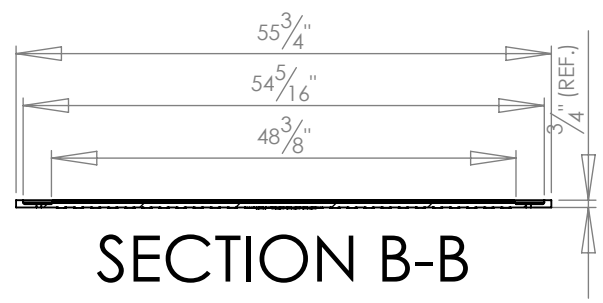
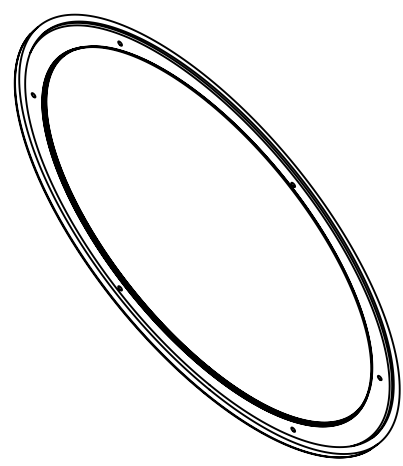
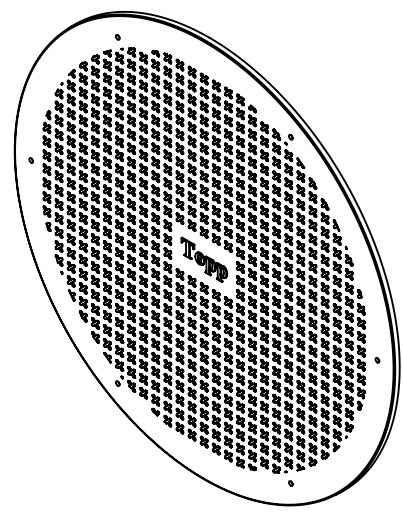


Ø 55³/₄" O.D.



TREAD HEIGHT 1/16"
(REF.)

(6) 1/2" HOLES ON A
51" BOLT CIRCLE



SECTION B-B

TOPP INDUSTRIES
INCORPORATED
420 N. ST. RD. 25 N.
ROCHESTER, IN 46975
PH: (574) 223-3681 FA: (574) 223-6106

PROPRIETARY AND CONFIDENTIAL

THE INFORMATION CONTAINED IN THIS DRAWING IS THE SOLE PROPERTY OF TOPP INDUSTRIES INC. ANY REPRODUCTION IN PART OR AS A WHOLE WITHOUT THE WRITTEN PERMISSION OF TOPP INDUSTRIES INC. IS PROHIBITED.

NEXT ASSY	USED ON
APPLICATION	

UNLESS OTHERWISE SPECIFIED:
DIMENSIONS ARE IN INCHES TOLERANCES: FRACTIONAL ± ANGULAR: MACH ± BEND ± TWO PLACE DECIMAL ± THREE PLACE DECIMAL ±
INTERPRET GEOMETRIC TOLERANCING PER:
MATERIAL
FINISH
DO NOT SCALE DRAWING

	NAME	DATE
	gh	
DRAWN		
CHECKED		
ENG APPR.		
MFG APPR.		
Q.A.		
COMMENTS:		

CUSTOMER: TOPP INDUSTRIES, INC.		
S.O. #:		
TITLE: 48" SOLID NON-SKID FIBERGLASS COVER - TOPP LOGO		
SIZE A	DWG. NO. C48WFNST	REV 02
SCALE: 1:20		SHEET 1 OF 1

5

4

3

2

1