



Product information presented here reflects conditions at time of publication. Consult factory regarding discrepancies or inconsistencies.

PUMP COMPANY

Zoeller Family of Water Solutions™

MAIL TO: P.O. BOX 16347 • Louisville, KY 40256-0347
SHIP TO: 3649 Cane Run Road • Louisville, KY 40211-1961
TEL: (502) 778-2731 • 1 (800) 928-PUMP • FAX: (502) 774-3624

visit our web site:
www.zoeller.com

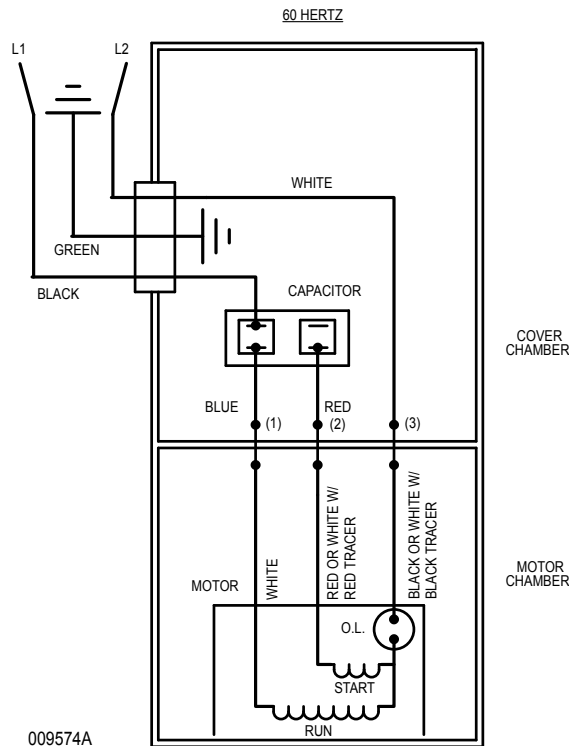
REPLACEMENT PARTS LIST FOR MODELS:

N270 NONAUTOMATIC 115V
E270 NONAUTOMATIC 230V
N4270 NONAUTOMATIC 115V
E4270 NONAUTOMATIC 230V

Consult factory for all other models

TO ORDER REPLACEMENT PARTS:
PLEASE FURNISH THE FOLLOWING INFORMATION:

- Model Number.
- Part Number of Pump.
- Part Number and Description of part.



WIRING DIAGRAM FOR MODELS
"N270" All Revisions; "E270" All Revisions;
"N4270" All Revisions; "E4270" All Revisions
6/95 thru Current

REPLACEMENT PARTS LIST FOR SINGLE SEAL MODELS "N270" and "E270"

See back page for illustration.

REF NO.	DESCRIPTION	MODELS:										E270-E
		N270-A	N270-B	N270-C	N270-D	N270-E	E270-A	E270-B	E270-C	E270-D	E270-E	
QTY	NOTES	6/95 thru 5/97	6/97 thru 3/07	4/07 thru 4/08	5/08 thru 8/09	9/09 thru Current	6/95 thru 5/97	6/97 thru 3/07	4/07 thru 6/08	7/08 thru 12/08	1/09 thru Current	
1	HANDLE	267032	267032	267032	267032	267032	267032	267032	267032	267032	267032	
2	CASE ASSEMBLY	267051	011549	011549	011549	011549	267051	011549	011549	011549	011549	
3	CASE GASKET	267007	267007	267007	267007	267007	267007	267007	267007	267007	267007	
4	POWER CORD	010155	010154	011551	011551	011551	011558	003618	003618	003618	003618	
5	SEAL ASSEMBLY POWER	010154	010154	010154	010154	010154	010154	010154	010154	010154	010154	
6	MOTOR HOUSING ASM/SOURCE	010156	010156	010156	010156	010156	010157	010157	010157	010157	010157	
	MOTOR HOUSING ASM/ZT	N/A	N/A	N/A	N/A	150013	N/A	N/A	N/A	N/A	150014	
7	ROTOR & BRG ASM/SOURCE	010994	010994	010994	010994	010994	010994	010994	010994	010994	010994	
	ROTOR & BRG ASM/ZT	N/A	N/A	N/A	N/A	150015	N/A	N/A	N/A	N/A	150015	
8	BEARING RADIAL	009540	009540	009540	009540	009540	009540	009540	009540	009540	009540	
9	25 OZ OIL CAN	010330	010330	010330	010330	010330	010330	010330	010330	010330	010330	
10	SEAL ASSEMBLY	011681	011681	011681	011681	011681	011681	011681	011681	011681	011681	
11	SQUARE RING SEAL	267006	267006	267006	267006	267006	267006	267006	267006	267006	267006	
12	BASE	010973	010973	010973	010973	010973	010973	010973	010973	010973	010973	
13	HANDLE RETAINERS	267053	267053	267053	267053	267053	267053	267053	267053	267053	267053	
14	TERM INSULATOR	001797	N/A	N/A	N/A	N/A	001797	N/A	N/A	N/A	N/A	
15	WIRE PACK	010159	011548	011548	011548	011548	010159	011548	011548	011548	011548	
16	CAPACITOR ASSEMBLY	010160	011550	011550	011550	011550	010160	011550	011550	011550	011550	
17	PUMP HOUSING	009519	009519	009519	009519	009519	009519	009519	009519	009519	009519	
18	IMPELLER	011690	011690	011690	011690	011690	011690	011690	011690	011690	011690	
19	SCREW 1/2-24X3/8	001883	001883	001883	001883	001883	001883	001883	001883	001883	001883	
20	SCREW 1/4-20X3/4	001916	001916	001916	001916	001916	001916	001916	001916	001916	001916	
21	SCREW 5-32X7/16	004644	004644	004644	004644	004644	004644	004644	004644	004644	004644	
22	WASHER#6	002117	002117	002117	002117	002117	002117	002117	002117	002117	002117	
23	GROUND SCREW	001877	001877	001877	001877	001877	001877	001877	001877	001877	001877	
24	THRU WALL TERMINAL	003402	003402	003402	003402	003402	003402	003402	003402	003402	003402	
25	O-RING	005701	005701	005701	005701	005701	005701	005701	005701	005701	005701	
26	SCREW #10-10X1 HHX WASH	005326	005326	005326	005326	005326	005326	005326	005326	005326	005326	
27	TEST PLUG	034090	034090	034090	034090	034090	034090	034090	034090	034090	034090	
28	SCREWS	012491	012491	012491	012491	012491	012491	012491	012491	012491	012491	
29	CAP BRACKET	153350	153350	153350	153350	153350	153350	153350	153350	153350	153350	
⊠	REBUILD KIT	010173	010173	010173	010173	010173	010173	010173	010173	010173	010173	

• Items included in Rebuild Kit.

⊠ Not shown in illustration.

NOTES:

- 1) See FM0160 parts price sheet for listing of parts pricing.
- 2) "N/A" indicates not applicable.
- 3) If an "X" follows model number or date of manufacture on brass I.D. tag, consult factory for ordering of this part.
- 4) When replacing capacitor assembly on "REV. A" pumps only (Item 16), customer must also replace the case assembly (Item 2).
- 5) When ordering motor housing (Item 6) or rotor and bearing (Item 7), specify either source or ZT motor. ZT stator can be identified by a completely round stator.

REPLACEMENT PARTS LIST FOR DOUBLE SEAL MODELS "N4270" and "E4270"

See back page for illustration.

REF NO.	DESCRIPTION	MODELS:										E4270-E
		N4270-A	N4270-B	N4270-C	N4270-D	N4270-E	N4270-A	N4270-B	N4270-C	N4270-D	N4270-E	
QTY	NOTES	6/95 thru 5/97	6/97 thru 3/07	4/07 thru 4/08	5/08 thru 8/09	9/09 thru Current	6/95 thru 5/97	6/97 thru 3/07	4/07 thru 6/08	7/08 thru 12/08	1/09 thru Current	
1	HANDLE	267032	267032	267032	267032	267032	267032	267032	267032	267032	267032	
2	CASE ASSEMBLY	267051	011549	011549	011549	011549	267051	011549	011549	011549	011549	
3	CASE GASKET	267007	267007	267007	267007	267007	267007	267007	267007	267007	267007	
4	POWER CORD	010155	011551	011551	011551	011551	011558	003618	003618	003618	003618	
5	SEAL ASSEMBLY POWER	010154	010154	010154	010154	010154	010154	010154	010154	010154	010154	
6	MOTOR HOUSING ASM/SOURCE	010156	010156	010156	010156	010156	010157	010157	010157	010157	010157	
7	MOTOR HOUSING ASM/ZT	N/A	N/A	N/A	N/A	150013	N/A	N/A	N/A	N/A	150014	
8	ROTOR & BRG ASM/SOURCE	010996	010996	010996	010996	010996	010996	010996	010996	010996	010996	
9	ROTOR & BRG ASM/ZT	N/A	N/A	N/A	N/A	150016	N/A	N/A	N/A	N/A	150016	
10	36.5 OZ OIL CAN	010331	010331	010331	010331	010331	010331	010331	010331	010331	010331	
11	16 OZ OIL CAN	010158	010158	010158	010158	010158	010158	010158	010158	010158	010158	
12	SEAL ASSEMBLY	011681	011681	011681	011681	011681	011681	011681	011681	011681	011681	
13	SQUARE RING SEAL	267006	267006	267006	267006	267006	267006	267006	267006	267006	267006	
14	BASE	153009	153009	153009	153009	153009	153009	153009	153009	153009	153009	
15	HANDLE RETAINERS	267053	267053	267053	267053	267053	267053	267053	267053	267053	267053	
16	TERM INSULATOR	001797	N/A	N/A	N/A	N/A	001797	N/A	N/A	N/A	N/A	
17	WIRE PACK	010159	011548	011548	011548	011548	010159	011548	011548	011548	011548	
18	CAPACITOR ASSEMBLY	010160	011550	011550	011550	011550	010160	011550	011550	011550	011550	
19	BEARING	009540	009540	009540	009540	009540	009540	009540	009540	009540	009540	
20	ADAPTER	011679	011679	011679	011679	011679	011679	011679	011679	011679	011679	
21	PUMP HOUSING	010939	010939	010939	010939	010939	010939	010939	010939	010939	010939	
22	IMPELLER	011690	011690	011690	011690	011690	011690	011690	011690	011690	011690	
23	TEST PLUG	034090	034090	034090	034090	034090	034090	034090	034090	034090	034090	
24	SCREW 1/4-20X3/4	001916	001916	001916	001916	001916	001916	001916	001916	001916	001916	
25	SCREW 10-24X3/8	001883	001883	001883	001883	001883	001883	001883	001883	001883	001883	
26	SCREW 6-32X7/16	004644	004644	004644	004644	004644	004644	004644	004644	004644	004644	
27	WASHER #6	002117	002117	002117	002117	002117	002117	002117	002117	002117	002117	
28	GROUND SCREW	001877	001877	001877	001877	001877	001877	001877	001877	001877	001877	
29	THRU WALL TERMINAL	003402	003402	003402	003402	003402	003402	003402	003402	003402	003402	
30	SNAP RING & WASHER	010167	010167	010167	010167	010167	010167	010167	010167	010167	010167	
31	SCREW S	012491	012491	012491	012491	012491	012491	012491	012491	012491	012491	
32	CAP BRACKET	153350	153350	153350	153350	153350	153350	153350	153350	153350	153350	
33	REBUILD KIT	010166	010166	010166	010166	010166	010166	010166	010166	010166	010166	

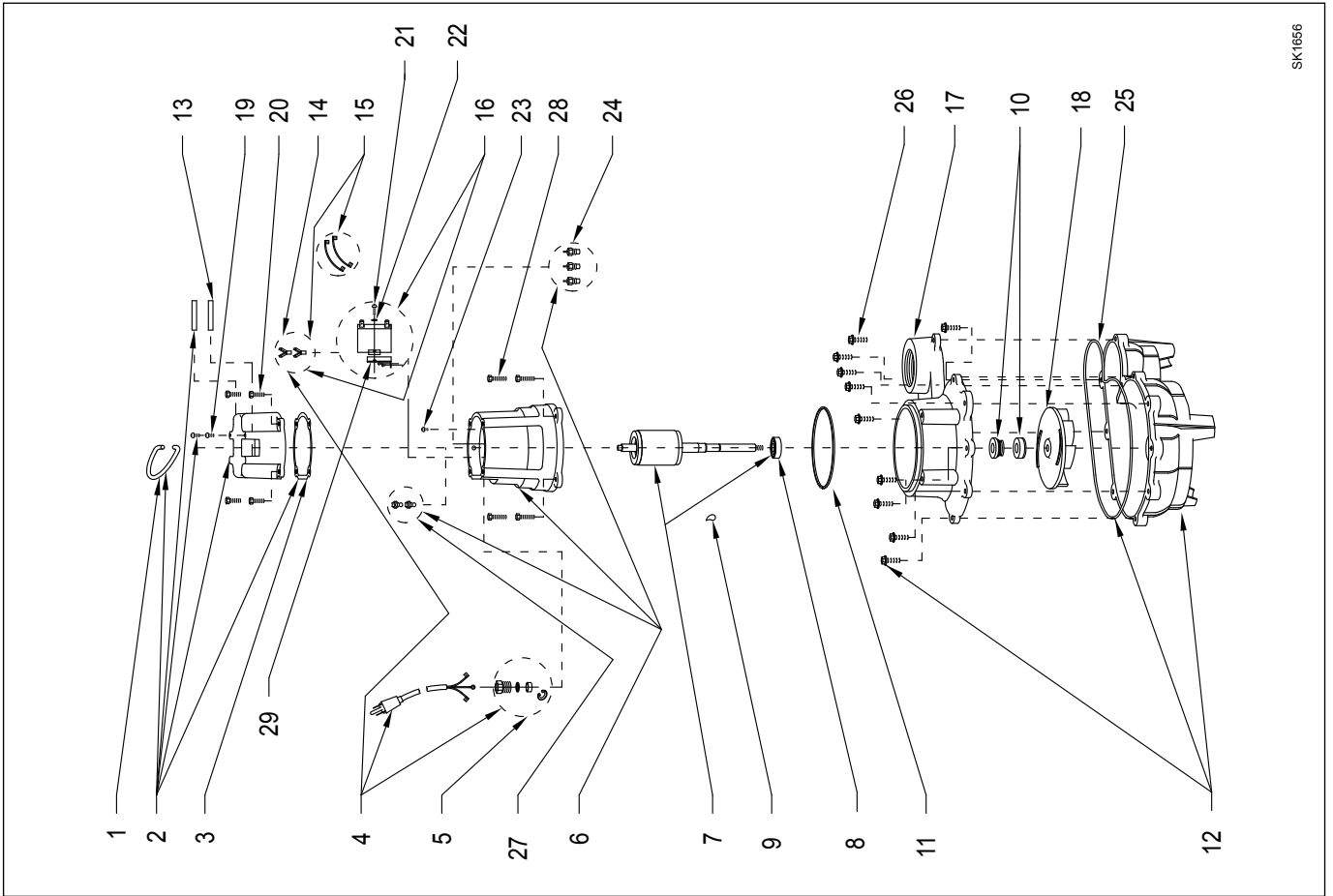
• Items included in Rebuild Kit.

▣ Not shown in illustration.

NOTES:

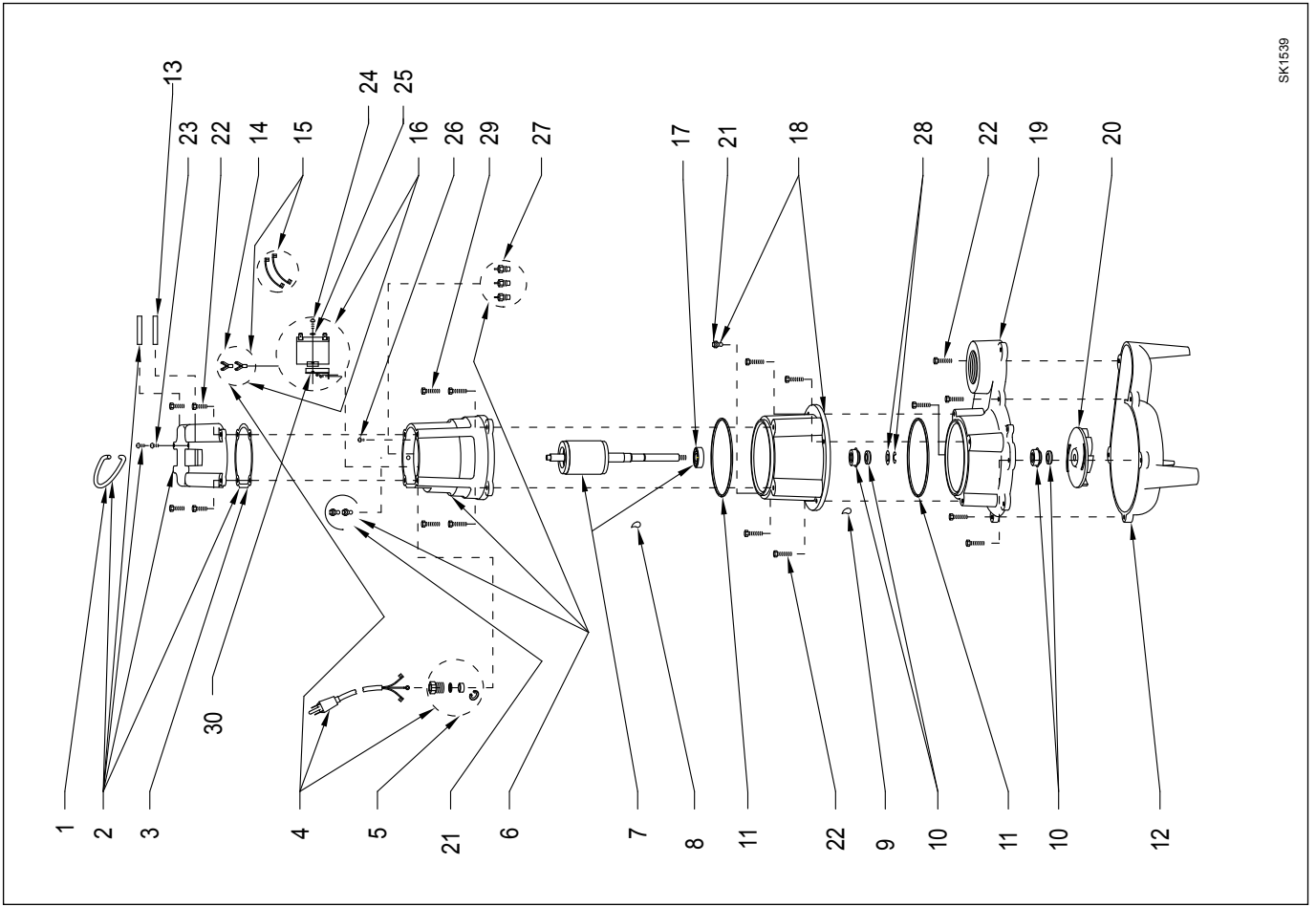
- 1) See FM0160 parts price sheet for listing of parts pricing.
- 2) "NA" indicates not applicable.
- 3) If an "X" follows model number or date of manufacture on brass I.D. tag, consult factory for ordering of this part.
- 4) When replacing capacitor assembly on "REV. A" pumps only (Item 16), customer must also replace the case assembly (Item 2).
- 5) When ordering motor housing (Item 6) or rotor and bearing (Item 7), specify either source or ZT motor. ZT stator can be identified by a completely round stator.

REPLACEMENT PARTS ILLUSTRATION FOR MODELS "N270" AND "E270"



SK1656

REPLACEMENT PARTS ILLUSTRATION FOR MODELS "N4270" AND "E4270"



SK1539